

Thank you for choosing Humminbird™, America's #1 name in fishfinders. Humminbird™ has built its reputation by designing and manufacturing top-quality, thoroughly reliable marine equipment. Your Humminbird™ is designed for trouble-free use in even the harshest marine environment. In the unlikely event that your Humminbird™ does require repairs, we offer an exclusive Service Policy-free of charge during the first year after purchase, and available at a reasonable rate after the one-year period. For complete details, see the warranty section in this manual. We encourage you to read this operators manual carefully in order to get full benefit from all the features and applications of your Humminbird™ product.

Contact our Customer Resource Center at 1-800-633-1468 or visit our website at www.humminbird.com.

The 100 Series™ Fishin' Buddy® comes in four models:

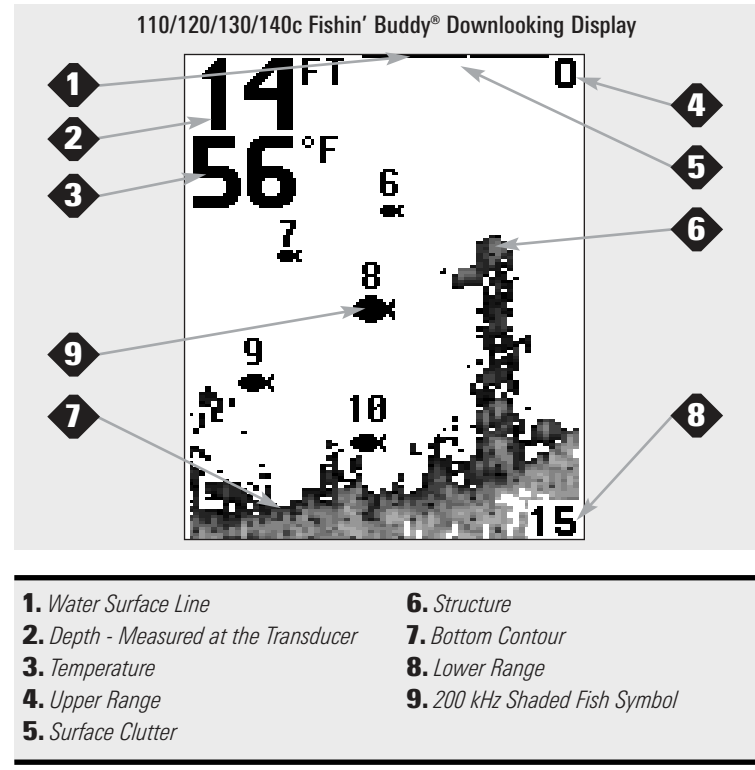
- **110 Fishin' Buddy™** - Downlooking Sonar, 160 V x 128 H Display
- **120 Fishin' Buddy™** - Downlooking and SideFinder™ Sonar, 240 V x 160 H Display
- **130 Fishin' Buddy™** - Downlooking and SideFinding™ Sonar, 320 V x 240 H Display
- **140c Fishin' Buddy™** - Downlooking and SideFinding™ Sonar, Transfective Color 320 V x 240 H Display.

WARNING! This device should not be used as a navigational aid to prevent collision, grounding, boat damage, or personal injury. When the boat is moving, water depth may change too quickly to allow time for you to react. Always operate the boat at very slow speeds if you suspect shallow water or submerged objects.

WARNING! Remove the Fishin' Buddy® from the mounting bracket support arm ring when the boat is traveling. Use the Fishin' Buddy® at trolling speed only. Traveling at high speed with the Fishin' Buddy® attached can cause damage to the device.

CAUTION: Do not touch the bottom of the transducer while it is transmitting sound. Prolonged contact with the transducer element can cause physical discomfort or minor tissue damage.

CAUTION: Do not over-tighten the C-clamp. Turning the C-clamp knob more than recommended may cause permanent damage. See the instructions for Attaching the Fishin' Buddy™ Mounting Bracket to the Boat.



What You See on the SideFiding™ Display

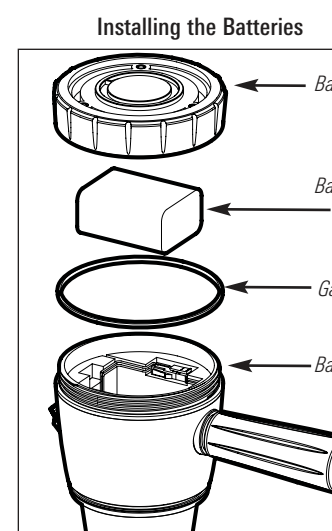
Cone - The transducer cone graph on the screen represents the area in which the 100 Series™ Fishin' Buddy™ is searching for fish.

Fish - The symbols displayed in the graph shows where the Fishin' Buddy™ has marked fish. Even though a fish may quickly move out of the transducer beam, all fish symbols are displayed for at least five seconds. The symbol does not indicate the size of the fish.

2. Installing the Batteries

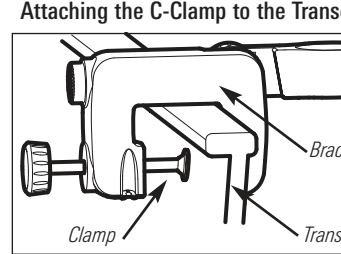
Use this procedure to install the batteries and attach the battery cap (including gasket). The Fishin' Buddy™ requires six alkaline "AA" size batteries (not included) for operation.

CAUTION: Always remove discharged batteries promptly and before periods of storage to prevent potential damage due to battery acid leakage. Failure to do so may void your warranty.



1. Remove the battery cap from the battery well if needed.
2. Place fresh batteries in the battery pack, using the diagram inside the battery pack itself as a guide.
3. Screw the battery cap onto the battery well, making certain the gasket is present and positioned correctly. **Hand tighten only!**

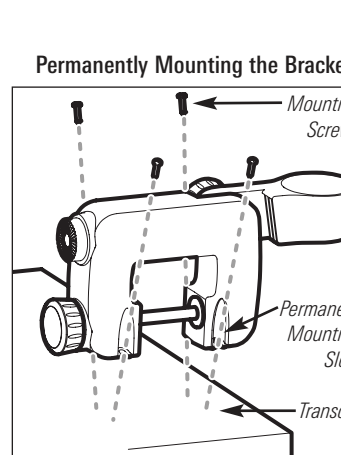
Attaching the C-Clamp to the Transom



Tighten the C-clamp by turning the knob lightly by hand. The knob will stop turning when the clamp touches the transom. Then, turn the knob up to two full additional revolutions. If the mounting bracket is not stable after tightening by hand, try repositioning the bracket.

CAUTION: Do not over-tighten the C-clamp. Tightening the C-clamp more than the recommended two revolutions may cause permanent damage.

OR...



- 2a. If you are using the permanent mounting technique, use the four permanent mounting slots at the base of the mounting bracket as a drill guide, and drill four 7/64" pilot holes into the mounting surface you have selected. Apply a generous amount of marine-grade silicone sealant to the holes, then re-position the mounting bracket, and attach it to the boat using #10 wood screws or bolts (not included). **Hand tighten only!**
- 2b. If you are using the permanent mounting technique, use the four permanent mounting slots at the base of the mounting bracket as a drill guide, and drill four 7/64" pilot holes into the mounting surface you have selected. Apply a generous amount of marine-grade silicone sealant to the holes, then re-position the mounting bracket, and attach it to the boat using #10 wood screws or bolts (not included). **Hand tighten only!**

Light

(Setting Not Saved in Memory)

Press the POWER-MENU key until LIGHT appears. Use the backlight for night fishing. Select either 0 (Off), or 1 through 5 to activate the backlight at the desired level. (0 to 5, Default = 0)

NOTE: Continuous backlight operation will significantly decrease the battery life for the Fishin' Buddy®.

Sensitivity

(Setting Saved in Memory)

Press the POWER-MENU key until SENSITIVITY appears. Sensitivity controls how much detail is shown on the display. Increasing the sensitivity shows more sonar returns from small baitfish and suspended debris in the water; however, the display may become too cluttered. When operating in very clear water or greater depths, increasing sensitivity shows weak returns that may be of interest. Decreasing the sensitivity eliminates the clutter from the display that is sometimes present in murky or muddy water. If Sensitivity is adjusted too low, the display may not show many sonar returns that could be fish. (0 - 10, Default = 5)

NOTE: This menu item only affects the Downlooking Sonar Beam.

Depth Range

(Setting Not Saved in Memory)

Press the POWER-MENU key until DEPTH RANGE appears. Automatic is the default setting. When in automatic, the lower range will be adjusted by the unit to follow the bottom. (Auto, 15, 30, 60, 120, 240; Default = Auto)

NOTE: In manual operation, if the depth is greater than the depth range setting, the bottom will not be visible on the display. Select AUTO to return to automatic operation.

NOTE: This menu item only affects the Downlooking Sonar Beam.

Contrast (SetUp Menu)

(Setting Saved in Memory; Menu is only Available on Monochrome Models)

Make sure that the Setup menu is selected, then press the POWER-MENU key until CONTRAST appears. Select a setting from 1 through 5. (1 to 5, Default = 3)

Scroll through all SetUp menu choices to exit the SetUp menu.

NOTE: The Contrast menu is only available on Monochrome models.

Fish ID+™ (SetUp Menu)

(Setting Saved in Memory)

Make sure that the Setup menu is selected, then press the POWER-MENU key until FISH ID+™ appears. Select either Off to view "raw" sonar returns or On to view Fish symbols. Fish ID+™ uses advanced signal processing to interpret sonar returns, and will display a Fish Symbol when very selective requirements are met. A select number of possible fish returns will be displayed with their associated depth. (On, Off, Default = On)

Scroll through all SetUp menu choices to exit the SetUp menu.



NOTE: This menu item only affects the Downlooking Sonar Beam.

Bottom View (SetUp Menu)

(Setting Saved in Memory)



WARNING! Disassembly and repair of this electronic unit should only be performed by authorized service personnel. Any modification of the serial number or attempt to repair the original equipment or accessories by unauthorized individuals will void the warranty. Handling and/or opening this unit may result in exposure to lead and/or other hazardous materials.

WARNING! This product contains lead, a chemical known to the state of California to cause cancer, both defects and other reproductive harm.

POLICY ON ENVIRONMENTAL COMPLIANCE: It is the intention of Humminbird™ to be a good corporate citizen and comply and meet all known and applicable environmental regulations in the areas and countries where our products are sold. We will promote and implement environmentally sound processes in support of national and international regulations.

ROHS STATEMENT: Product designed and intended as a fixed installation or part of a system in a vessel may be considered beyond the scope of Directive 2002/95/EC of the European Parliament and of the Council of 27 January 2003 on the restriction of the use of certain hazardous substances in electrical and electronic equipment.

WEEE STATEMENT: Product designed and intended as a fixed installation or part of a system in a vessel may be considered beyond the scope of Directive 2002/95/EC of the European Parliament and of the Council of 27 January 2003 on waste electrical and electronic equipment (WEEE).

CALIFORNIA PROPOSITION 65 STATEMENT: Lead in cable jackets and boxes is restricted to 300 parts per million or less as determined by ICP-AES test methods.

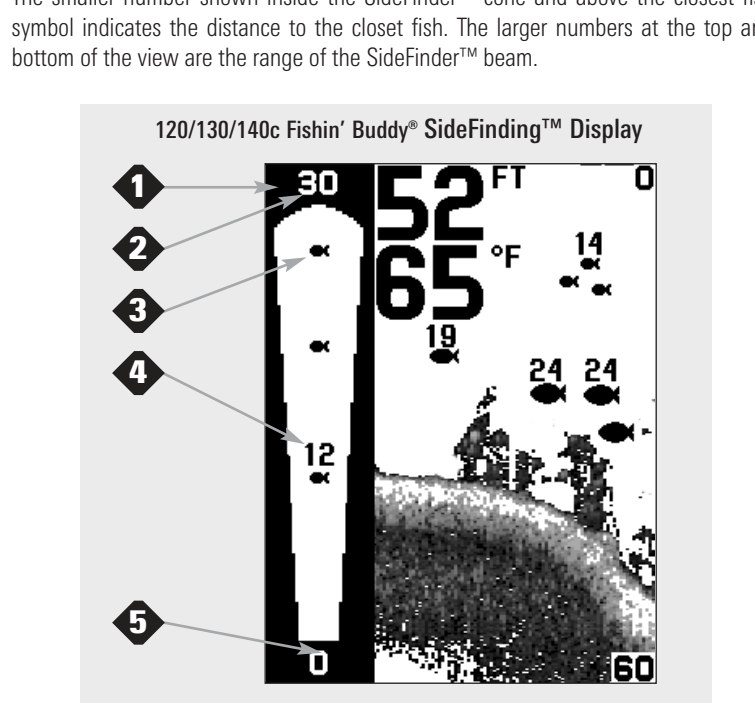
WARNING! ONLY USE 6 "AA" alkaline batteries with the Fishin' Buddy®. Do NOT attempt to power the Fishin' Buddy® from the boats 12 VDC, 24 VDC or 36 VDC power supply. This can result in permanent damage to your Fishin' Buddy®, Humminbird® is not responsible for over-voltage failures.

Fishin' Buddy® Sonar Technology

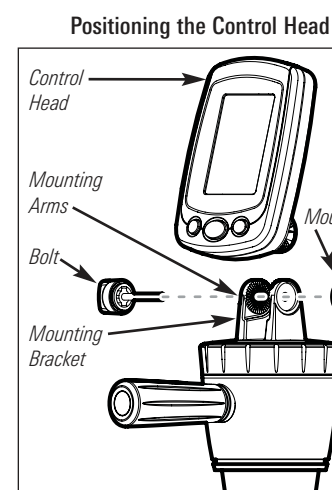
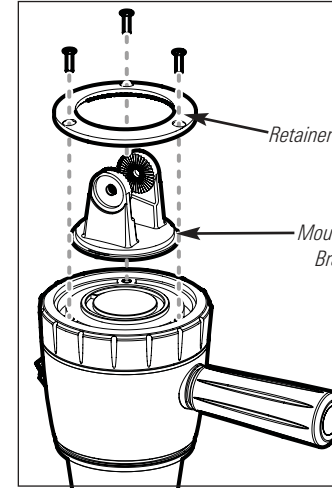
The Fishin' Buddy® is the easiest to use fishfinder ever. For most anglers, all you'll ever need to do is power on and fish! The Fishin' Buddy® automatically determines depth and makes adjustments to keep the bottom and fish visible on the display.

Your Fishin' Buddy® will have Downlooking Sonar only, or Downlooking and SideFinding™ sonar. Find the correct sonar description that applies to your unit.

Distance to closest Fish - Two sets of numbers are shown in the SideFinder™ view. The smaller number shown inside the SideFinder™ cone and above the closest fish symbol indicates the distance to the closest fish. The larger numbers at the top and bottom of the view are the range of the SideFinder™ beam.



Assembling the Mounting Arms

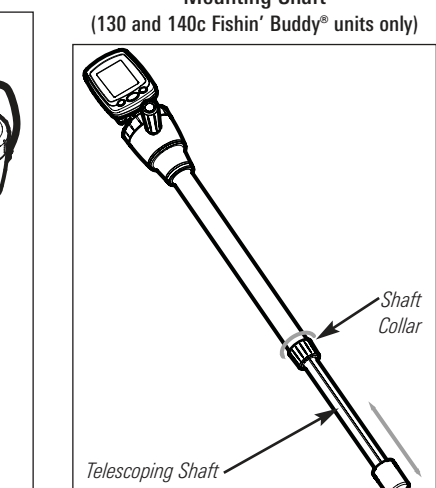
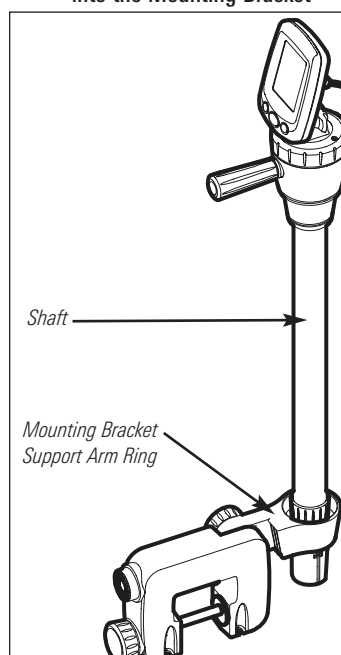


6. Mounting the Fishin' Buddy®

Use this procedure to mount the Fishin' Buddy®.

NOTE: When mounted, the Fishin' Buddy® transducer must be positioned so that it will be submerged when the boat is in the water.

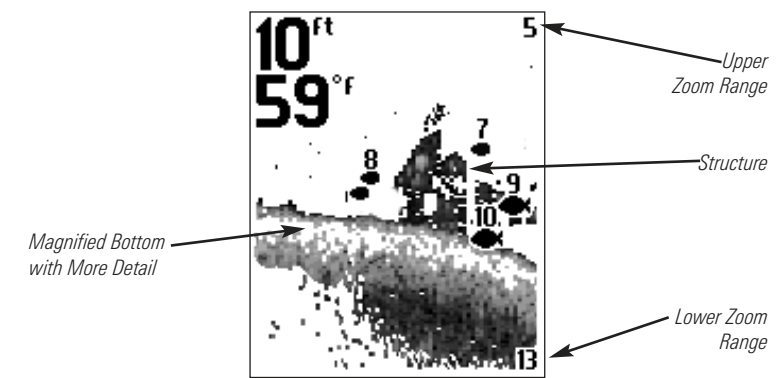
1. Slide the Fishin' Buddy® shaft into the mounting bracket support arm ring.
2. Place the mounting bracket on top of the battery cap.
3. Screw the three #6 machine screws (included) into the 3 holes on top of the battery cap, and tighten them until the control head mounting bracket is secured. **Hand tighten only!**
4. Position the control head on top of the mounting bracket, positioning it so that it fits between the mounting arms, and with the display facing towards the handle (see illustration for guidance).
5. While holding the control head in place, slide the bolt provided through the mounting bracket assembly, and screw the mounting knob onto the other side, in order to hold the control head in place. **Hand tighten only!**
6. You can tilt the control head by loosening the mounting knob and tilting the control head forward or backward to suit your needs. You can also swivel the control head on the mounting bracket by grasping the control head and rotating it.



ZOOM

(Setting Not Saved in Memory)

Press the POWER-MENU key until ZOOM appears. Select Auto to magnify the area around the bottom in order to reveal fish and structure close to the bottom that may not be visible during normal operation. When ZOOM is set to Auto, the upper and lower Depth Ranges are automatically adjusted to keep the area above and below the bottom on the display. Select Off to return to normal operation. (Off, Auto, Manual Ranges, Default = Off)



There is also a series of manual ranges which can be selected. The manual depth ranges are determined by the present depth conditions, and are displayed in increments of 7, based on current depth conditions.

NOTE: This menu item only affects the Downlooking Sonar Beam.

Chart Speed

(Setting Saved in Memory)



Make sure that the Setup menu is selected, then press the POWER-MENU key until BOTTOM VIEW appears. Bottom View selects the method used to represent the bottom and structure on the display. (Monochrome Model Menu Choices: Structure ID, Black, WhiteLine, Inverse, Default = Inverse) (Color Model Menu Choices: Structure ID, WhiteLine, Default = Structure ID)

Scroll through all SetUp menu choices to exit the SetUp menu.

Structure ID™ represents weak returns as light pixels and strong returns as dark pixels. This has the benefit of ensuring that strong returns will be clearly visible on the display.



WhiteLine™ highlights the strongest sonar returns in white resulting in a distinctive outline. This has the benefit of clearly defining the bottom on the display.

Downlooking Sonar

All Fishin' Buddy™ models come equipped with Downlooking Sonar which sends sound waves from the bottom of the transducer into the water directly below the transducer.

SideFiding™ Sonar

120/130/140c Fishin' Buddy™ models come equipped with SideFiding™ Sonar in addition to the Downlooking Sonar to scan where you cast and, with good accuracy, determine which echoes are from fish and which are from other objects. Fish that are startled by your boat and move away would not be seen with a conventional depthfinder.

The SideFiding™ SONAR beam comes out from the flat side of the transducer housing at the bottom of the shaft which is aligned with the handle at the top of the transducer shaft. When searching for fish, make sure the handle points toward the area of your search. The handle faces the opposite direction from the transducer.

Downlooking Sonar

Your 110 Fishin' Buddy™ uses a 200 kHz Downlooking Sonar system with a 34° area of coverage. Boat speed, wave action, bottom hardness, water conditions and transducer installation can all affect depth capability.

Downlooking and SideFiding™ Sonar

Your 120, 130 and 140c Fishin' Buddy™ models use 200 kHz Downlooking Sonar and 455 kHz SideFiding™ Sonar. Downlooking and SideFiding™ Sonar is optimized to show the greatest bottom definition using the 34° 200 kHz beam yet can still indicate fish found in the SideFiding™ (109° 455 kHz) beam when the SideFiding™ feature is turned on. Boat speed, wave action, bottom hardness, water conditions and transducer installation can all affect depth capability.

What You See on the Downlooking Sonar Display

The Fishin' Buddy™ displays underwater information in an easy-to-understand format. The top of the display corresponds to the water surface at the transducer, and the bottom of the display corresponds to the Depth Range automatically selected for the current water depth. The Bottom Contour varies as the depth under the boat changes. Digital readouts provide precise information for depth, fish and water temperature.

As the boat moves, terrain and bottom composition variations are displayed. Fish, baitfish and thermoclines (underwater temperature changes) are displayed when detected. Underwater conditions vary greatly, so some experience and interpretation is needed to realize all the benefits of the Fishin' Buddy™ - use the picture as a guide to the most common conditions and practice using your Fishin' Buddy™ over known bottom types.

Each shoreline has its own unique characteristics. The 100 Series™ Fishin' Buddy™ can see all the way up to the shore when the drop-off is sharp or if there are ledges. When the slope of the bottom is gentle, the Fishin' Buddy™ will not see all the way to the shoreline. The Fishin' Buddy™ can normally detect spawning fish that build nests near the shoreline. Direct experience with each shoreline will teach you the Fishin' Buddy™ capabilities.

The best way to understand how your Fishin' Buddy™ "sees" is to imagine that the transducer is a flashlight and the water is clear. If you are trying to "see" into weeds, the ability of your flashlight beam to penetrate depends on the thickness of the weeds. If the weeds are thin, your flashlight beam will penetrate further. If you are trying to see past an underwater rise to view the shoreline, it is a question of how high the rise is. You can "see" the shore if you can shine your flashlight beam above the rise and illuminate the shore in the background.

Occasionally, the Fishin' Buddy® may falsely mark objects other than fish. This can occur when air bubble streams from nearby boats or air filled swim ladders. This can also occur when the Fishin' Buddy® is aimed at a cement or rock wall due to a double reflection effect. The 100 Series™ Fishin' Buddy® is designed to eliminate false readings, especially with the filter on. Due to the strength of the signal, it is possible to fool and thus, get an occasional false reading if the unit is working from a stationary, non-moving boat or a pier. The SideFiding™ filter allows the Fishin' Buddy™ to be much more selective in marking fish. Use the filter around docks and other structures in the water. The Fishin' Buddy™ will display fewer fish with the filter on.

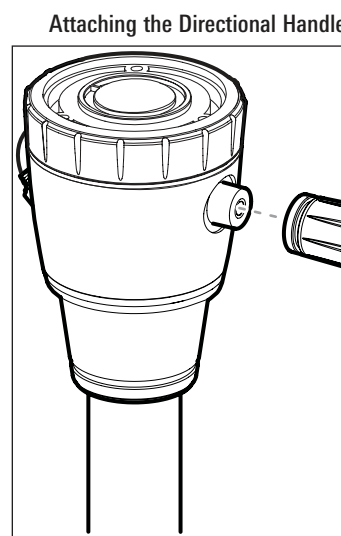
Getting Started

The Fishin' Buddy™ is easy to use. The following steps summarize the installation tasks you will perform in the following sections:

1. Attaching the Directional Handle
2. Installing the Batteries
3. Attaching the Control Head to the Fishin' Buddy®
4. Connecting the Cables to the Control Head
5. Assembling and Attaching the Fishin' Buddy® Mounting Bracket to the Boat
6. Mounting the Fishin' Buddy®,

1. Attaching the Directional Handle

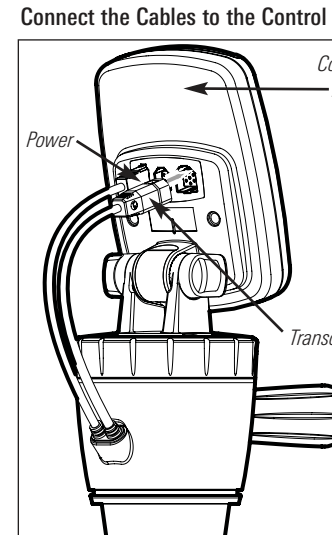
Use this procedure to attach the directional handle to the battery well.



1. Screw the directional handle into the socket on the side of the battery well.

4. Connecting the Cables to the Control Head

Use this procedure to attach the transducer and power cables on the battery well to the keyed connectors on the back of the control head.



1. Attach the transducer and power cables from the battery well to the control head, using the keyed connectors on the back of the control head (see illustration).

NOTE: The transducer and power cables are already permanently attached to the battery well.

5. Assembling and Attaching the Fishin' Buddy® Mounting Bracket to the Boat

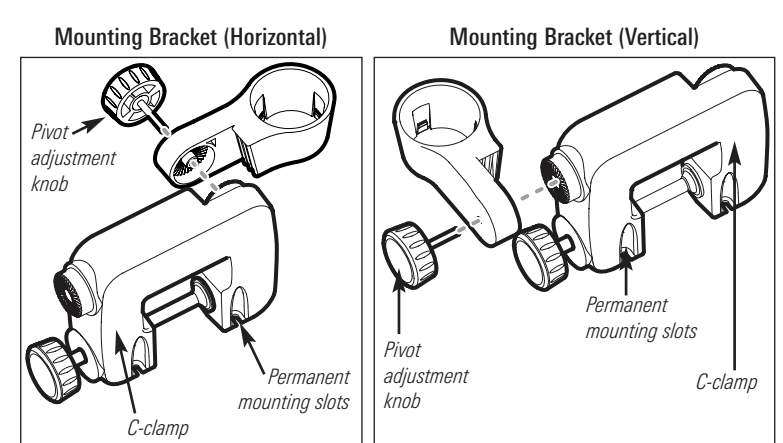
Use this procedure to assemble the Fishin' Buddy® mounting bracket, then attach it to the boat in the desired mounting location, either by using the C-clamp on the mounting bracket as a temporary mount, or by using the permanent mounting slots on the bottom of the mounting bracket to screw or bolt to the boat.

NOTE: C-clamp mounting is the most versatile and portable way to mount the Fishin' Buddy® to your boat.

The Fishin' Buddy® should be mounted where it will be most visible and accessible. Use the following information when considering a mounting location:

- The transducer will not work when it is not in the water.
- Turbulent water or water filled with air bubbles can cause interference or prevent the transducer from operating.

1. Assemble the mounting bracket as shown below, using either one of the two ratcheted mounting posts provided (see illustration), and screw on the knob. **Hand tighten only!**



If the shaft is too long, or not long enough, adjust the length by removing the Fishin' Buddy® from the mounting bracket, and unscrew the collar at the bottom of the shaft until it allows the shaft to telescope. Adjust the length of the shaft as needed, then tighten the screw collar once more. Re-mount the Fishin' Buddy® to the mounting bracket.

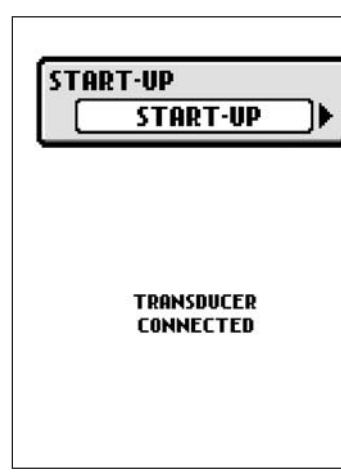
NOTE: Only the 130 and 140c Fishin' Buddy® units have adjustable mounting shafts. The 110 and 120 Fishin' Buddy® units have a fixed shaft length.

Press the power button and start fishing!

The Fishin' Buddy® is designed to run automatically with just a press of the power button. To get the most out of your Fishin' Buddy®, read the next section on functions and features.

Powering ON and OFF

Press and release the POWER-MENU key to power the Fishin' Buddy® on. Press and hold the POWER-MENU key until the unit shuts down to power off.



When the Fishin' Buddy® powers on, the Start-Up menu temporarily appears. From this menu, select either Start-Up, Simulator, or SetUp.

- Use Start-Up for on the water use.
- Use Simulator for learning how to use the system with simulated sonar data; access Simulator by pressing the Right Arrow Key once.
- Use SetUp to display additional setup menu choices; access SetUp by pressing the Right Arrow Key twice (See SetUp Menu for more information).

Press the POWER-MENU key until CHART SPEED appears. Select a setting from 1-5 to increase or decrease the chart speed, where 1 is the slowest and 5 is the fastest chart speed. Chart speed determines the speed at which the sonar information moves across the display, and consequently the amount of detail shown. A faster speed shows more information and is preferred by most anglers; however, the sonar information moves across the display quickly. A slower speed keeps the information on the display longer, but the bottom and fish details become compressed and may be difficult to interpret. (1 to 5, Default = 5)

NOTE: This menu item only affects the Downlooking Sonar Beam.

Fish Alarm

(Setting Saved in Memory)

Press the POWER-MENU key until FISH ALARM appears. Select Off for no fish alarm, or one of the following symbols to set the alarm. An alarm will sound when the Fishin' Buddy™ detects fish that correspond to the alarm setting. Fish Alarm will only sound if Fish ID+ is also set to On. (Off, Large, Large/Medium, All, Default = Off)



NOTE: This menu item only affects the Downlooking Sonar Beam.

NOTE: The Fish Alarm will only sound for fish detected in the Downlooking Sonar Beam.

Depth Alarm

(Setting Not Saved in Memory)

Press the POWER-MENU key until DEPTH ALARM appears. Select Off for no Depth Alarm, or select 3 to 99 feet to set the alarm depth. An audible alarm sounds when the depth is equal to or less than the setting. (Off, 3 to 99 feet, Default = Off)

NOTE: This menu item only affects the Downlooking Sonar Beam.

Filter

(Setting Saved in Memory)

Press the POWER-MENU key until FILTER appears. Select either Off or On. Filter adjusts the sonar filter to limit interference on the display from sources such as your boat engine, turbulence, or other sonar devices. (On, Off, Default = Off)

NOTE: This menu choice only affects the Downlooking Sonar Beam.

SetUp Menu

(Setting Not Saved in Memory)

Press the POWER-MENU key until SetUp appears. Select either Off or On. (Off, On, Default = Off)

When you choose SetUp, additional menu choices will be available that are not a part of the Main Menu System. After selecting SetUp, press the POWER-MENU key to display the SetUp menu choices, one at a time. SetUp Menu choices include:

- Contrast
- Light
- Sensitivity
- Depth Range
- ZOOM
- Chart Speed
- Battery Alarm
- Language (International only)
- Bottom View
- Units (International only)

Scroll through all SetUp menu choices to exit the SetUp menu.

Inverse is a method where weak returns are shown with dark pixels and strong returns with lighter pixels. This has the benefit of ensuring that weak signals will be clearly visible on the display.

NOTE: Not available on Color Models.

Battery Alarm (SetUp Menu)

(Setting Saved in Memory)

Make sure that the Setup menu is selected, then press the POWER-MENU key until BATTERY ALARM appears. Select Off or 6.2 to 8.3 Volts. Battery Alarm sounds when the input battery voltage is equal to or less than the menu setting. (Off, 6.2 to 8.3 Volts, Default = Off)

Scroll through all SetUp menu choices to exit the SetUp menu.

Language (SetUp Menu)

(Setting Saved in Memory; International only)

Make sure that the Setup menu is selected, then press the POWER-MENU key until LANGUAGE appears (International Units only). LANGUAGE selects the display language for menus. (Settings vary, Default = English)

Scroll through all SetUp menu choices to exit the SetUp menu.

Units (SetUp Menu)

(Setting Saved in Memory; International only)

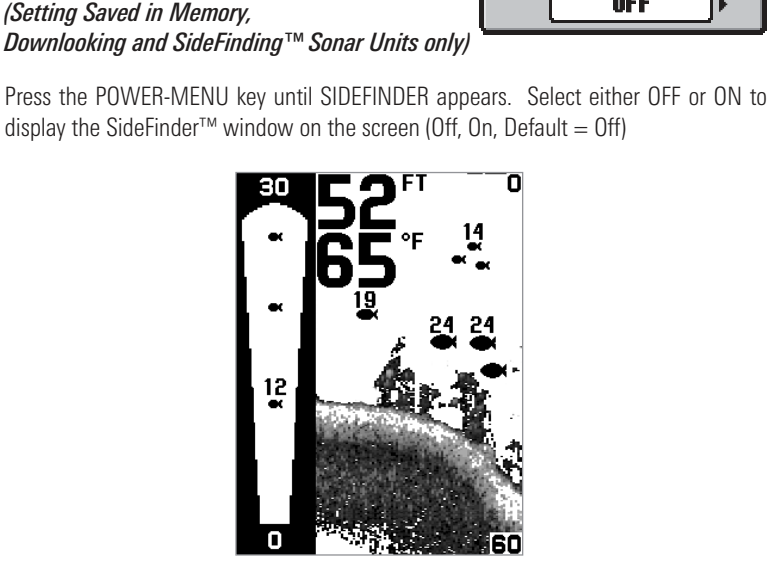
Make sure that the Setup menu is selected, then press the POWER-MENU key until UNITS appears (International Units only). UNITS selects the units of measure. (Feet/F, Meters/C, Fathoms/C, Default = Meters/C, where F stands for Fahrenheit and C stands for Celsius)

Scroll through all SetUp menu choices to exit the SetUp menu.

SideFinder™

(Setting Saved in Memory; Downlooking and SideFiding™ Sonar Units only)

Press the POWER-MENU key until SIDEFINDER appears. Select either Off or ON to display the SideFinder™ window on the screen (Off, On, Default = Off)



SideFinder™ Range

(Setting Saved in Memory; Downlooking and SideFiding™ Sonar Units only)

Press the POWER-MENU key until SIDEFINDER RANGE appears. Select the desired range for the SideFinder™ beam. (30, 60, 90, 120, Default = 30)

SideFinder™ Filter

(Setting Saved in Memory; Downlooking and SideFiding™ Sonar Units only)

Press the POWER-MENU key until SIDEFINDER FILTER appears. The sidefinder filter is used to reduce false markings from submerged objects like pier poles and submerged branches. The filter is best used around docks and other shoreline structures where false markings might occur. In most situations, and especially in open water, the best performance is obtained with the filter turned off. Select either Off or On (Off, On, Default = Off)