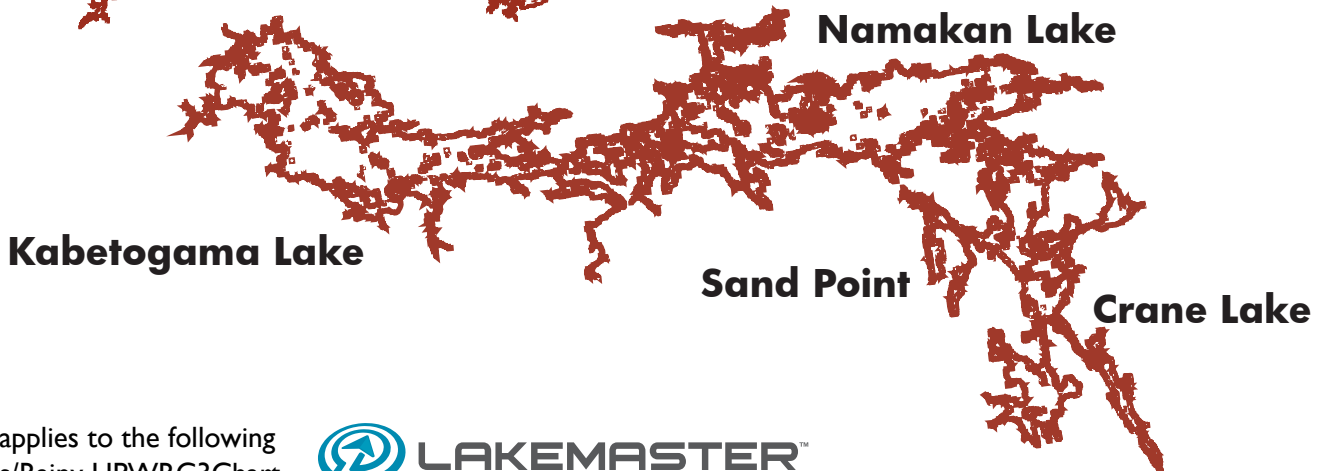
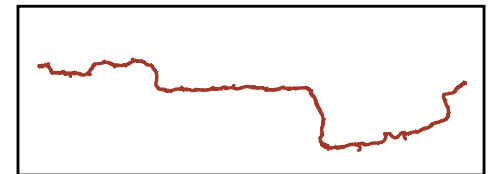
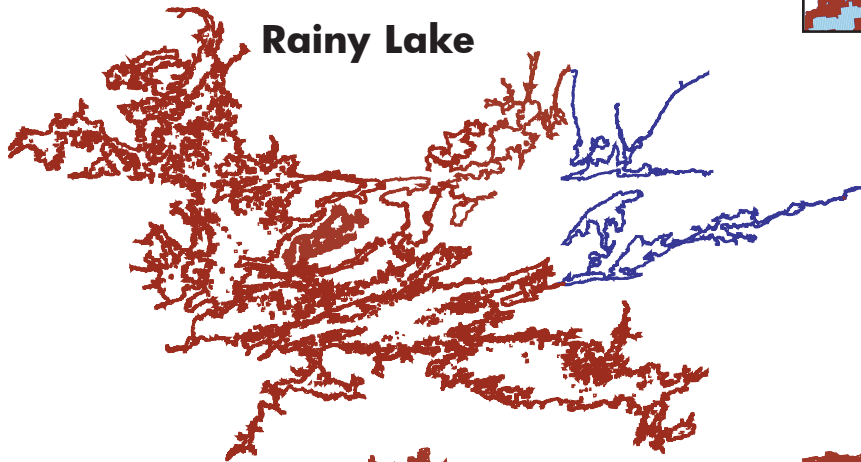
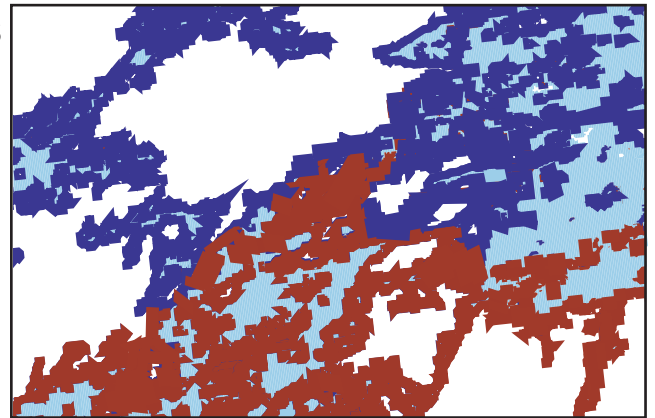
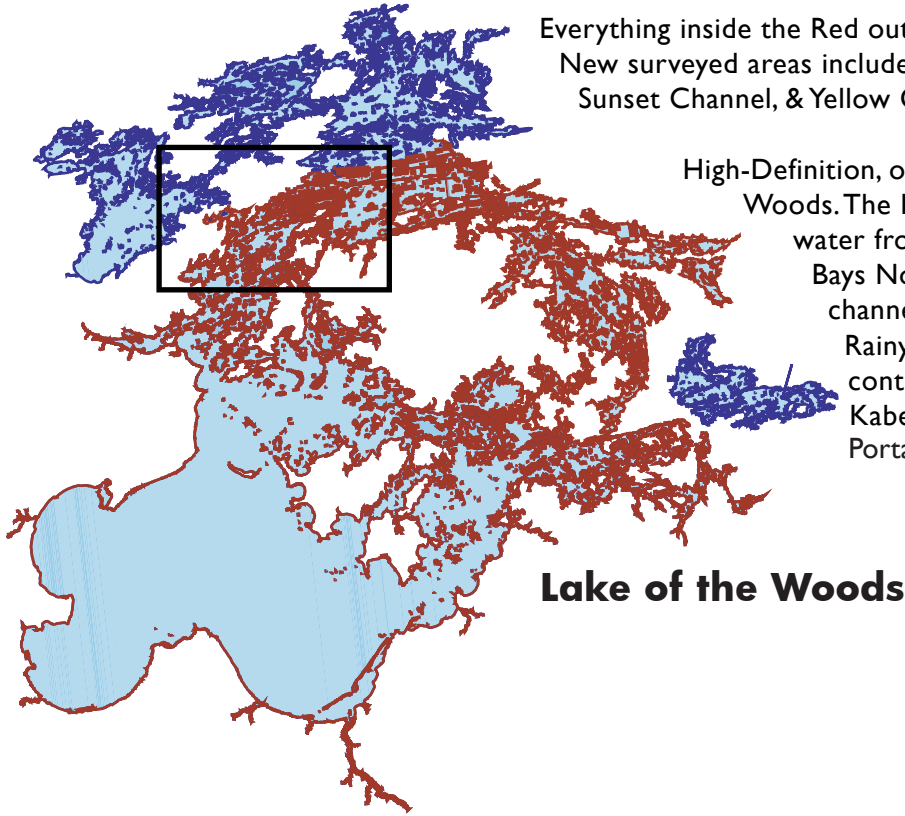


Woods/Rainy Coverage Map

Everything inside the Red outline will display High-Definition, one-foot contours. New surveyed areas include Blueberry Inlet, Deadbroke Channel, Long Bay, Sunset Channel, & Yellow Girl Bay. Also includes detailed roads and base map.

High-Definition, one-foot Contours for nearly all of Lake of the Woods. The High-Definition detail covers all U.S. and Canadian water from Big Narrows through Big Traverse & Sabaskong Bays North to Sioux Narrows and west beyond Deadbroke channel (750,000 total surveyed acres). Rainy Lake & the Rainy River now including High-Definition, one-foot contours for Redgut & Rice Bay, all of Lakes Kabetogama, Namakan, Sand Point, and Crane. Portage Bay and Outer Bay not yet surveyed.

Blue areas not surveyed, no contours.



This coverage map applies to the following LakeMaster® Woods/Rainy HPWRC3Chart

