

# Eureka!

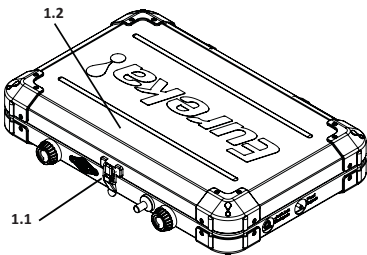
## SPIRE STOVE SPIRE LX STOVE

Model:  
2572180  
2572185

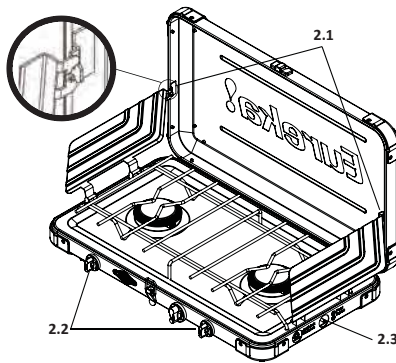
(EN) Instructions for use  
(FR) Directives d'utilisation  
(ES) Instrucciones de uso



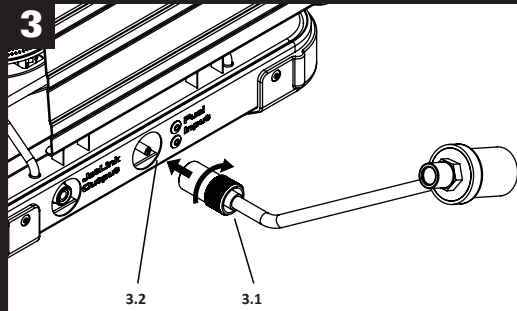
1



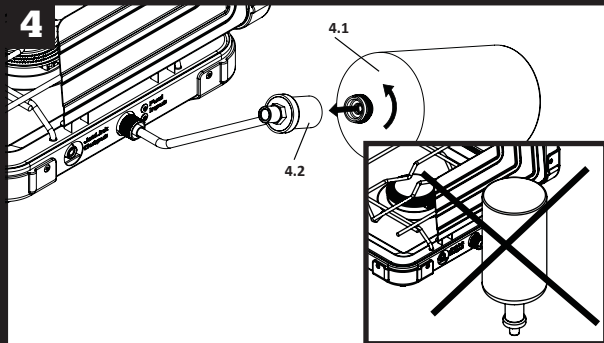
2



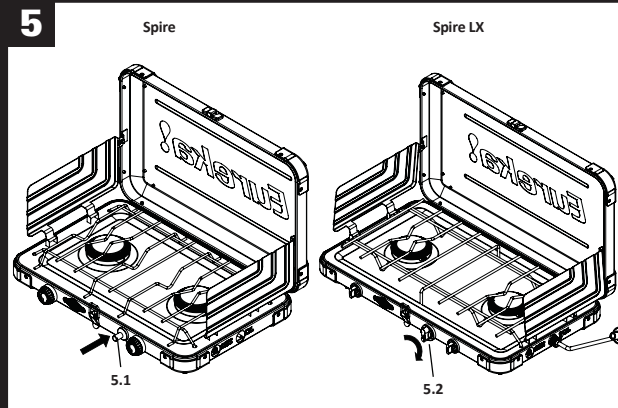
3



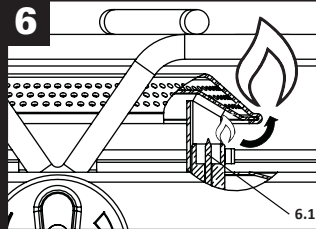
4



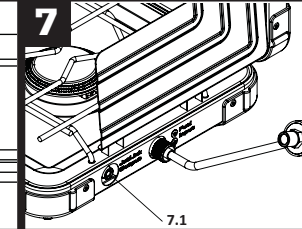
5



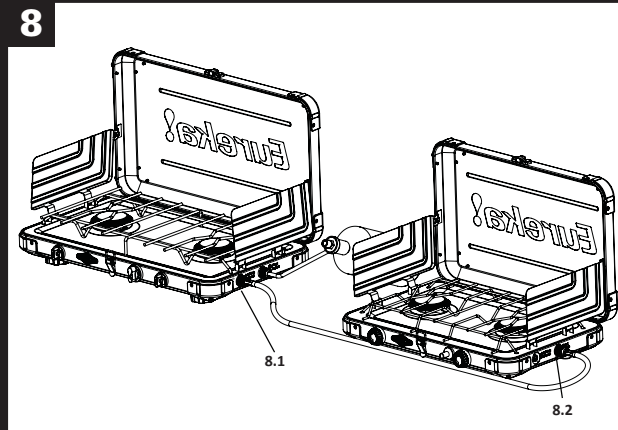
6



7



8



(EN) ENGLISH

**Important:** Read these warnings and instructions for use carefully to familiarize yourself with the appliance before connecting it to its gas container. Keep these instructions for future reference. **USE OUTDOORS ONLY**

**FOR YOUR SAFETY**

**FOR YOUR SAFETY**

**If you smell gas:**

1. Do not attempt to light appliance.
2. Extinguish any open flame.
3. Disconnect from fuel supply.

**FOR YOUR SAFETY**

**Do not store or use gasoline or any other liquids with flammable vapors in the vicinity of this or any other appliance.**

**CARBON MONOXIDE HAZARD**

**DANGER**



**CARBON MONOXIDE HAZARD**

**This appliance can produce carbon monoxide, which has no odor. Using it in an enclosed space can kill you. Never use this appliance in an enclosed space such as a camper, tent, car, or home.**

If there is a leak on your appliance (smell of gas), move it to a well-ventilated, flame-free location where the leak may be detected and stopped. Check for leaks on your appliance outside. Do not use a flame to detect leaks, use soapy water. **ONLY USE IN WELL VENTILATED AREA. Accessible parts may become very hot.** Keep young children away. Stove must be operated on a horizontal surface, at least 1m/3.3ft away from any combustible materials. Do not move, lift, or tilt stove with lit burner(s). Flaring may occur.

**SPECIFICATIONS**

**Gas category:** Propane under vapor pressure. This appliance should only be used with 16.4 oz disposable propane cylinders (sold separately). It may be hazardous to attempt to fit other types of gas canisters. The LP-gas cylinder(s) used with this stove must be constructed and marked in accordance with the specifications for LP-gas cylinders of the U.S. Department of Transportation or Transport Canada, CAN/CSA B339. Refillable Bulk LP-Gas Tanks with a maximum capacity of 20 pounds may also be used with an optional bulk tank adapter hose (use Eureka! model 2572182 to connect to bulk tank). **Jet Size:** 0.39mm **Gas Consumption (per burner):** 10.4 MJ/hr (AU) || 210 g/hr (2.9 kW) (EU) || 10,000 BTU/hr (CA)

**ASSEMBLY**

Refer to the following diagrams shown on Page 1 when assembling and operating Spire Series Stoves:

- |                                   |                                  |
|-----------------------------------|----------------------------------|
| 1. Closed, latched stove          | 5. Ignition locations            |
| 2. Open stove                     | 6. Burner/igniter detail         |
| 3. Connection of Fuel Regulator   | 7. JetLink™ Output port          |
| 4. Connection of Propane Cylinder | 8. Example of JetLink™ Expansion |

Place stove on a flat, level surface, and release the latch (1.1) to open the lid (1.2). Open side-windcreens and secure by inserting tabs into latches in the lid (2.2). Ensure that both control valves (2.2) are closed firmly (rotate clockwise). Check that seals (O-ring (2.3) between the appliance and gas container) are in place and in good condition before connecting to the gas container (cartridge). Do not use the appliance if it has damaged or worn seals. Do not use an appliance which is leaking, damaged, or which does not operate properly. Securely screw Fuel Regulator (3.1) to the Fuel Input port (3.2) located on the center of the right side of the stove. Securely screw Propane Cylinder (4.1) into Fuel regulator (4.2), in the orientation shown in (4). Never operate stove with Propane Cylinder in an inverted position.

**OPERATION WARNINGS**

Do not leave stove unattended while in use. Check the seals before connecting a new gas container to the appliance. **The gas container/canister shall be changed in a well ventilated location, outside, away from any sources of ignition, such as naked flames, pilots, electric fires, and away from other people.** If there is a leak on your appliance (smell of gas), take it outside immediately into a well ventilated, flame free location where the leak may be detected and stopped. If you wish to check for leaks on your appliance, do it outside. Do not try to detect leaks using a flame, use soapy water. Put some soapy water on the gas connection points between gas canister and the appliance, if bubble found, there is gas leakage. Keep stove area clear and free from combustible materials, gasoline, and other flammable vapors and liquids. Do not obstruct the flow of combustion and ventilation air to the stove. **If heating liquids near maximum capacity, use only low flame settings and exercise caution to prevent boil-over.** Do not leave this appliance unattended while it is in operation.

**OPERATING INSTRUCTIONS**

**Ignite burners before placing cookware on grates.** Keep burner at arm's length, away from face, during ignition. Flame can erupt and flare during ignition. Never expose stove to flammable vapors or liquids while lighting the burner. **It can cause an explosion or fire.** The stove must not be exposed to flammable vapors or liquids during lighting.

**Lighting the Burners:** To light, remove all vessels from cooking surface, open control valve (2.2) counterclockwise until fully opened and gas flow can be heard, then activate igniter. To activate igniter, refer to information below:

Spire: Push Igniter button (5.1).

Spire LX: Rotate Igniter knob clockwise (5.2).

Ignition occurs underneath burner as a pilot flame (6.1). Pilot flame then lights the top burner. If pilot flame is observed, but does not light the top burner, extinguish the pilot flame by closing the control valve fully (rotating counterclockwise). Then repeat steps above to light the burner. Do not move, lift, or tilt burner while lit. Fuel can spray and cause flare-ups.

**Cooking:** Rotate control valve knob (2.2) clockwise to decrease flame setting (Note: Spire LX stove will have 3-4 rotations of control knob between valve being fully open and closed).

**O-ring:** If the regulator/input O-ring is damaged or cracked, contact your dealer or Eureka! for service.

**Expanding your cooking system:** This stove comes equipped with a Patent-Pending JetLink™ fuel output port (7.1), which provides regulated fuel to additional JetLink™-compatible stoves and accessories offered by Eureka! or Jetboil®. Refer to instructions accompanying JetLink™ accessories for their use. As shown in example (8), male end of JetLink™ Hose connects to Fuel Input of 2nd stove (8.2). Do not attempt to use stoves or accessories that are not certified as JetLink™-compatible by Eureka! or Jetboil. Insure that all threaded connections are completely secure/threaded before operating system.

**To connect to bulk tank adapter:** Use only with Jetboil or Eureka! regulated propane Stoves. Must be used in conjunction with Regulator (4.2) provided with stove. Insure that all threaded connections are completely secure/threaded before operating system.

**Cleaning Stove:** Allow stove to cool before cleaning. Do not use a dishwasher or abrasive compounds to clean. Only wash by hand with soapy water.

**STORAGE AFTER USE**

Turn off control valves (2.2) (tighten clockwise) to extinguish flame to each burner. **PARTS MAY BE HOT. ALWAYS CHECK THAT THE BURNERS ARE EXTINGUISHED BEFORE DISCONNECTING THE FUEL CYLINDER.** Disconnect Fuel Cylinder and then Fuel Regulator. Allow stove to cool before storing. **Always disconnect fuel cylinder from Regulator after use.** Fuel cylinders can explode. Store fuel cylinders outdoors in a dry, well-ventilated area, away from heat, and out of reach of children.

**TROUBLESHOOTING AND MAINTENANCE**

Do not modify this appliance. Modification of the product and/or using the product not in accordance with the instructions and recommended use may be hazardous and will void the warranty. This appliance must only be serviced by an authorized person. If an issue cannot be corrected using these instructions, see Limited Warranty below. Contact your local dealer, distributor, or Jetboil for parts and/or service. If stove is operating poorly, check mix tube to ensure that air holes are not blocked, and that the jet is not dirty or contaminated. Ensure that Fuel Input and JetLink™ Output ports are kept clean and debris-free at all times. If the stove flash back to the burner tube or lift, turn off stove, call supplier.

**O-ring:** If the regulator/input O-ring is damaged or cracked, contact your dealer or Eureka! for service.

**Flame does not extinguish:** Valve is damaged. Tighten valve as much as possible, blow out flame, and immediately detach fuel cartridge. Return to dealer.

**Igniter fails to spark:** If igniter fails to spark, or pilot fails to light the burner, use matches or a lighter, following instructions detailed in **OPERATING INSTRUCTIONS - Lighting the Burners.** See your dealer or contact Eureka! for service. If stove is wet, igniter may fail to spark.

**WARRANTY INFORMATION**

**USA:** Eureka! Spire & Spire LX Stoves have a 1-year limited warranty. Should this product not function properly under normal use within 1 year of purchase, contact the dealer or Eureka! for return process information. Eureka! alone will determine if the problem is covered by this warranty. If so, Eureka! will repair or replace the unit at its discretion and return it to you free of charge. This warranty does not cover any damage or malfunction arising from misuse, modification, improper maintenance, negligence, normal wear and tear, accident, or use other than as described in these instructions. This warranty applies only to the original purchaser. Proof of purchase is required. Except as provided herein, there are no other warranties, express or implied, including but not limited to the implied warranties of merchantability and fitness for a particular purpose. Eureka! shall not be liable for any consequential or incidental damages whatsoever. This warranty gives you specific legal rights. You may also have other rights that vary from state to state. Some states do not allow the exclusion or limitation of incidental or consequential damages, or limitation or exclusion of implied warranties, so the above exclusions or limitations may not apply to you.

**INTERNATIONAL:** Contact your local retailer or distributor for information regarding any warranties covering your Spire/Spire LX. For a list of distributors, refer to the list provided elsewhere on this sheet, or visit [eurekatent.com](http://eurekatent.com). Do not modify the appliance. Modification of the product and/or using the product not in accordance with the instructions and recommended use may be hazardous and will void the warranty. Spire/Spire LX must only be serviced by an authorized person. Return to your local retailer or distributor if a fault cannot be corrected using these instructions.

ANSI Z21.72-2011 / CSA 11.2 - 2011

For additional diagrams and FAQs, visit: [Eurekatent.com](http://Eurekatent.com)

V1

**EUREKA!**  
Johnson Outdoors Gear, Inc.  
625 Conklin Road  
Binghamton, NY 13903  
T: 1.800.847.1460

[www.eurekatent.com](http://www.eurekatent.com)  
[info@jetboil.com](mailto:info@jetboil.com)  
**JOHNSON**  
OUTDOORS  
THE RESULTS OF ADVENTURE

Visit [www.eurekatent.com/where\\_to\\_buy](http://www.eurekatent.com/where_to_buy) to locate a dealer near you

