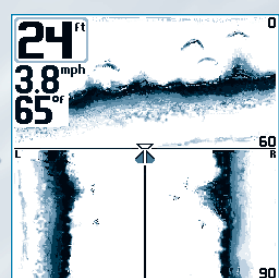
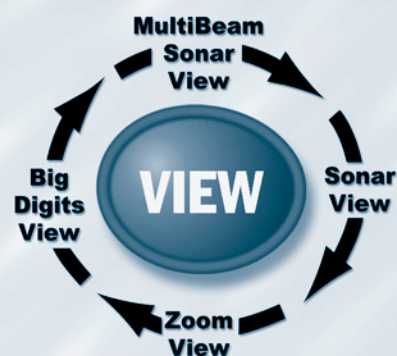


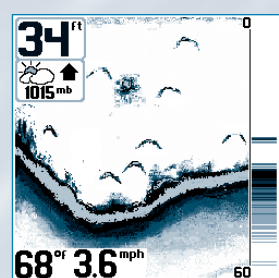


Power/Light

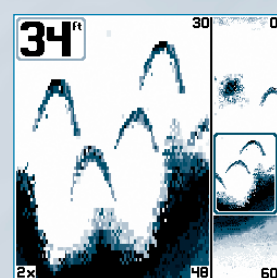
Momentarily press POWER to turn the unit on. While the unit is on, momentarily press POWER to access Light and Contrast menus. Press and hold POWER for 3 seconds to turn the unit off.



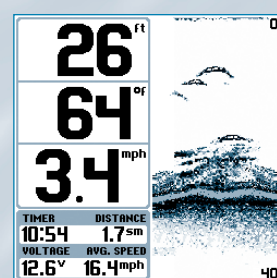
MultiBeam Sonar View



Sonar View



Zoom View



Big Digits View

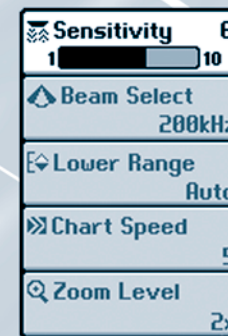
View

Press the VIEW key to advance to the next view. Repeatedly pressing VIEW cycles through all views available. Views can be hidden to optimize the system to your fishing requirements (see System Setup Menu - Advanced User Mode on the other side of this manual).



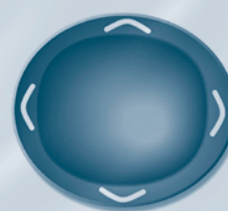
X-Press™ Menu

Press the MENU key once for the X-Press™ Menu. The X-Press menu allows you to access the settings that you change frequently without having to navigate through a menu system. Only the X-Press menu items associated with the current view are displayed.



4-Way Menu Control

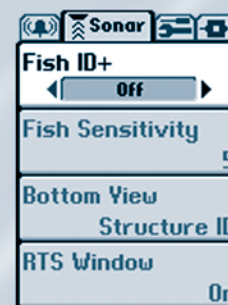
Use UP or DOWN to select a menu item. Use LEFT or RIGHT to make a menu choice.



Note: Menu choices are implemented and saved immediately - no further action is required.

Main Menu System

Press the MENU key twice for the Main Menu System. The menu system is organized under tab headings to help you find a specific menu item quickly. In the main Menu, first use the 4-Way Menu Control LEFT or RIGHT key to select a tab; then use the UP or DOWN key to select the menu item. The menu system is expandable; when you attach a supported accessory to the Matrix system, the Matrix menus may change to display new choices for those accessories that require menu access.



Note: Instruction guides included with the accessory will detail accessory-specific features and functions.

EXIT

Exit

The EXIT key has multiple functions, depending on the situation:

- If an alarm is sounding, pressing EXIT will cancel the alarm.
- If a menu tab is selected, pressing EXIT will exit the menu mode and return to the view.
- If a menu is active, pressing EXIT will return to the previous level in the menu system.
- If a cursor is active on the display, pressing EXIT will clear the cursor from the display.

MATRIX MENUS

X-Press™ Menu

Sensitivity	Adjusts the sonar Sensitivity (Low = 1, High = 10, Default=6)
Beam Select	Selects the sonar beam used in the Sonar View. (200 kHz, 83 kHz, Default=200 kHz)
Lower Range	Adjusts the Lower Depth Range (Auto, 10 to 1200 feet, Default=Auto)
Chart Speed	Adjusts the speed of the display movement (1 to 5 or Ultra, where 1=Slow, 5=Fast, Ultra=Fastest, Default=5)
Zoom Level	Adjusts the zoom magnification for Zoom View (2x, 4x, 6x, 8x, Default=2x)

NOTE: The following additional menu items are available when Advanced User Mode is enabled: Upper Range, 83kHz Sensitivity and 455 kHz Sensitivity (depending on the current view). See Advanced User Mode section.

Sonar Main Menu

Fish ID+™	Activates Fish ID+ target identification and fish symbols (On, Off, Default=Off)
Fish Sensitivity	Adjusts the fish detection sensitivity (Low = 1, High = 10, Default=5)
Bottom View	Selects style of bottom presentation for Sonar Views (Structure ID®, WhiteLine®, Bottom Black, Default=Structure ID®)
RTS® Window	Activates the Real Time Sonar Window on Sonar Views (On/Off, Default=On)

Note: The following additional menu items are available when Advanced User Mode is enabled: Surface Clutter, Noise Filter, Water Type and Max Depth. See Advanced User Mode section.

Alarm Main Menu

Depth Alarm	Sets the Depth Alarm point (Off, 1 to 100 feet, Default=Off)
Fish Alarm	Sets the Fish Alarm size (Off, All, Large/ Med, Large, Default=Off)
Low Battery Alarm	Sets the Low Battery Alarm point (Off, 8.5 to 17.5 Volts, Default=Off)
Alarm Tone	Sets the pitch of the alarms (Low, Medium, High, Default=Medium)

System Setup Main Menu

Units - Depth	Selects the unit of measure for depth (Feet, Meters®, Fathoms, Default=Feet)
Units - Temperature*	Selects the unit of measure for temperature (Fahrenheit/Celsius, Default=Celsius)
Units - Distance**	Selects the unit of measure for distance (sm, nm, km®, Default=sm)
Units - Speed**	Selects the unit of measure for speed (mph, kts, kph®, Default=mph)
User Mode	Selects the user mode menus (Normal, Advanced, Default=Normal)
Triplog Reset**	Resets the Triplog to zero
Language*	Selects the menu display language (Default: English)
Restore Defaults	Restores all settings to the Factory Defaults

Note: The following additional menu items are available when Advanced User Mode is enabled: Select Views, Select Readouts, Depth Offset, Temperature Offset, Speed Calibration** and NMEA Output. See Advanced User Mode section.

*Note: Menu item available on International models only.

**Note: Menu item available with Temp/Speed Accessory only.

Tilt and Swivel Mount

Your Matrix unit will tilt up to 90° and swivel up to 360° to accommodate your viewing preferences.



Quick Disconnect Mounting System

Press the button located to the rear of your Matrix unit to release the lock and remove the head unit from the base.

Matrix Fishing System Advanced Accessories

Your Matrix unit represents a revolutionary Fishing System that grows in capability with the addition of one or more accessories. Accessories customize the Matrix Fishing System to your needs and enable you to stay on the edge of new technology and to catch more fish. When an accessory is connected to the system, additional menus, readouts and views are added automatically to your Matrix menu system. Note that some accessories may require additional software to be loaded into the Matrix product. Accessories available today that are supported by your Matrix include:

Temperature/Speed: simply plugs into the Matrix unit and provides real time speed and temperature readouts, as well as a valuable Triplog function.

Note: If an external Temperature/Speed (TS-W) or Temperature (TG-W) accessory is connected AND a transducer with temperature built in is connected at the same time, the TS-W or TG-W accessory will override the temperature which is built in to the transducer.

WeatherSense™ Fishing Condition Monitor: simply plugs in to the Matrix unit and provides barometric pressure readout and trend data. Professional fishermen know that barometric pressure impacts fish behavior and they modify their tactics based on it. Now you can have access to barometric pressure data in real time, right on the boat.

GPS Connection Cable: adds GPS capability to the Matrix unit by connecting a handheld or other NMEA® GPS-compatible device. GPS capability instantly turns your Matrix into a Combo-Trackplotter to show position, breadcrumb trail and waypoints on the big, easy-to-read screen, all with big, easy-to-use buttons that handhelds do not offer. In addition, you can store up to 750 waypoints and 10 tracks inside the Matrix unit!

PC Connect Cable: links the Matrix unit to a PC to access product software updates and new features from www.humminbird.com. This accessory requires the MSWindows-compatible HumminbirdPC™ software from our Website to communicate with the Matrix unit. If you have upgraded to GPS, you can easily enter, annotate and exchange fishing spots with friends and download them into your Matrix unit using this cable.

Be sure to check out our website www.humminbird.com for additional new and exciting accessories to grow your Matrix Fishing System!

*NMEA 0183 is a National Marine Electronics Association standard for data communication.