

LAKEMASTER MAP CARDS

User Manual

532358-2EN_A



TABLE OF CONTENTS

Overview	5	Display Aerial Imagery.....	13
Set up the Control Head.....	5	Display a Lake	15
Set up for the Day	7	Follow the Contour.....	16
What's on the Map.....	9	Save and Export Navigation Data	20
Adjust the Map Display Settings	11	Contact Humminbird.....	21





SIMPLY. CLEARLY. BETTER.


THANK YOU!


Thank you for choosing Humminbird®, the #1 name in marine electronics. Humminbird has built its reputation by designing and manufacturing top quality, thoroughly reliable marine equipment. Your Humminbird is designed for trouble-free use in even the harshest marine environment. We encourage you to read this manual carefully in order to get the full benefit from all the features and applications of your Humminbird product.


Contact Humminbird Technical Support at humminbird.com or call 1-800-633-1468.


 **WARNING!** This device should not be used as a navigational aid to prevent collision, grounding, boat damage, or personal injury. When the boat is moving, water depth may change too quickly to allow time for you to react. Always operate the boat at very slow speeds if you suspect shallow water or submerged objects.


 **WARNING!** The electronic chart in your Humminbird unit is an aid to navigation designed to facilitate the use of authorized government charts, not to replace them. Only official government charts and notices to mariners contain all of the current information needed for the safety of navigation, and the captain is responsible for their prudent use.


 **WARNING!** Do NOT save data files (waypoints, routes, tracks, groups, recordings, etc.) to your map card. Saving data to your map card will permanently damage it. You can save navigation data to the control head and export it to a blank card. See **Save and Export Navigation Data** for details.


 **WARNING!** Do NOT delete or change the contents of your map card. Changing the card will permanently damage it.


 **WARNING!** Humminbird is not responsible for the loss of data files (waypoints, routes, tracks, groups, recordings, etc.) that may occur due to direct or indirect damage to the unit's hardware or software. It is important to back up your control head's data files periodically. Data files should also be saved to your computer before restoring the control head defaults or updating the software. See your control head operations manual for details.


 **WARNING!** Disassembly and repair of this electronic unit should only be performed by authorized service personnel. Any modification of the serial number or attempt to repair the original equipment or accessories by unauthorized individuals will void the warranty.


 **WARNING!** This product contains chemicals known to the State of California to cause cancer and birth defects or other reproductive harm.


 **NOTE:** Do NOT leave the control head SD slot cover open. The slot cover should always be closed to prevent water damage to the unit.


 **NOTE:** Some features discussed in this manual require a separate purchase, and some features are only available on international models. Every effort has been made to clearly identify those features. Please read the manual carefully in order to understand the full capabilities of your model.

 **NOTE:** The illustrations in this manual may not look the same as your product, but your unit will function in the same way.

 **NOTE:** To purchase accessories for your control head, visit our Web site at humminbird.com or contact Humminbird Technical Support at 1-800-633-1468.

 **NOTE:** The procedures and features described in this manual are subject to change without notice. This manual was written in English and may have been translated to another language. Humminbird is not responsible for incorrect translations or discrepancies between documents.

 **NOTE:** Product specifications and features are subject to change without notice.

 **NOTE:** Humminbird verifies maximum stated depth in saltwater conditions, however actual depth performance may vary due to transducer installation, water type, thermal layers, bottom composition, and slope.

ROHS STATEMENT: Product designed and intended as a fixed installation or part of a system in a vessel may be considered beyond the scope of Directive 2002/95/EC of the European Parliament and of the Council of 27 January 2003 on the restriction of the use of certain hazardous substances in electrical and electronic equipment.

ATTENTION INTERNATIONAL CUSTOMERS: Products sold in the U.S. are not intended for use in the international market. Humminbird international units provide international features and are designed to meet country and regional regulations. Languages, maps, time zones, units of measurement, and warranty are examples of features that are customized for Humminbird international units purchased through our authorized international distributors.

To obtain a list of authorized international distributors, please visit our Web site at humminbird.com or contact Humminbird Customer Service at (334) 687-6613.

ENVIRONMENTAL COMPLIANCE STATEMENT: It is the intention of Johnson Outdoors Marine Electronics, Inc. to be a responsible corporate citizen, operating in compliance with known and applicable environmental regulations, and a good neighbor in the communities where we make or sell our products.

WEEE DIRECTIVE: EU Directive 2002/96/EC “Waste of Electrical and Electronic Equipment Directive [WEEE]” impacts most distributors, sellers, and manufacturers of consumer electronics in the European Union. The WEEE Directive requires the producer of consumer electronics to take responsibility for the management of waste from their products to achieve environmentally responsible disposal during the product life cycle.

WEEE compliance may not be required in your location for electrical & electronic equipment (EEE), nor may it be required for EEE designed and intended as fixed or temporary installation in transportation vehicles such as automobiles, aircraft, and boats. In some European Union member states, these vehicles are considered outside of the scope of the Directive, and EEE for those applications can be considered excluded from the WEEE Directive requirement.



This symbol [WEEE wheelie bin] on product indicates the product must not be disposed of with other household refuse. It must be disposed of and collected for recycling and recovery of waste EEE. Johnson Outdoors Marine Electronics, Inc. will mark all EEE products in accordance with the WEEE Directive. It is our goal to comply in the collection, treatment, recovery, and environmentally sound disposal of those products; however, these requirements do vary within European Union member states. For more information about where you should dispose of your waste equipment for recycling and recovery and/or your European Union member state requirements, please contact your dealer or distributor from which your product was purchased.

HELIX®, Humminbird®, i-Pilot® Link, LakeMaster® and SOLIX® are trademarked by or registered trademarks of Johnson Outdoors Marine Electronics, Inc.

Adobe, Acrobat, Adobe PDF, and Reader are either registered trademarks or trademarks of Adobe Systems Incorporated in the United States and/or other countries.

microSD is a trademark or registered trademark of SD-3C, LLC in the United States, other countries or both.

© 2020 Johnson Outdoors Marine Electronics, Inc. All rights reserved.

OVERVIEW

Install a Humminbird LakeMaster® Map Card to add enhanced or high definition lake maps to your Humminbird chartplotter. The Humminbird LakeMaster PLUS Map Card allows you to add an aerial image base layer to your LakeMaster map.

Compatibility: Humminbird LakeMaster Map Cards are available to use with **HELIX® control heads with chartplotting capabilities** and **all SOLIX® control heads**. Visit humminbird.com to review the latest compatibility information.

LakeMaster PLUS Compatibility: Your HELIX chartplotter must have software version 7.460 or later to display LakeMaster PLUS maps. All SOLIX control head software is compatible with LakeMaster Plus. Visit humminbird.com to review the latest compatibility information.

SET UP THE CONTROL HEAD

Use the following instructions to start using the latest LakeMaster features with your Humminbird control head.

1 | Update the Control Head Software (HELIX models only)

Your HELIX control head should have the latest software version installed to enable the Humminbird LakeMaster Map Card on your control head. LakeMaster PLUS is enabled with control head software version 7.460 and later. Visit our Web site at humminbird.com for compatibility information.

Check the Current Software Version

1. **Power On:** Press the POWER key.
2. When the title screen is displayed, press the MENU key.
3. Select **System Status** from the Start-Up Options menu.

Read the Software Version number. If you are using a LakeMaster PLUS Map Card, you must have software version 7.460 or later installed on your control head.


Checking the Software Version Number

System Status	
Self Test	Passed
Serial Number	19111522000025
Model	HELIX 10x CHIRP MEGA SI+ GPS G4N
Software Version	2.240
Humminbird Basemap	1.031
Voltage	13.7 V
Total Time	69 hrs
IP Address	----
MAC Address	00:1a:29:00:00:25

4. **Power Off:** Press and hold the POWER key.

Update the Control Head Software


If you need to update the control head software, follow the instructions in this section. See your control head operations manual for additional information about updating software.

 **NOTE:** It is important to back up your control head's data files periodically. Data files should also be saved to your computer before restoring the control head defaults or updating the software. See your control head operations manual for details.

1. Insert a formatted microSD or SD card into the slot on your PC.
If you have a microSD card, you will use a card adapter with your PC.
2. **Download:** Click Support > Software Updates. The available software updates are listed as **Downloads** under each product.
 - Under Downloads, click the file name. Confirm the file name is for your control head model.
 - Read the instructions in the dialog box and select Download.
 - Follow the on-screen prompts to save the software file to the microSD or SD card.
3. Insert the microSD or SD card with the updated software file into the control head slot.
4. **Power On:** The control head will recognize the new software and run through a series of prompts to confirm the software installation.

2 | Insert the LakeMaster Map Card

Your control head is compatible with an SD Card or a microSD card. To install the map card, follow the instructions included with your control head operations guide. Also, use the following guidelines:

- **Confirm the map card is locked.** The switch should be pushed down.
 **WARNING!** Do NOT save data files (waypoints, routes, tracks, groups, recordings, etc.) to your map card. Saving data to your map card will permanently damage it. You can save navigation data to the control head or export it to a blank card. See **Save and Export Navigation Data** for details.
- **Do not force the card into the slot.** The card should click easily into place. See your control head operations manual for instructions.
- **Do not leave the card slot cover open.** The slot cover should always be closed to prevent water damage to the unit.

Confirming the Map Card is Locked



SET UP FOR THE DAY

Use the following instructions to get started each time you go out on the water.

1 | Power On

1. Press the POWER key.
2. Choose your startup mode.

If you're on the water with GPS reception, select Normal. [Normal mode is required for on-the-water use.]

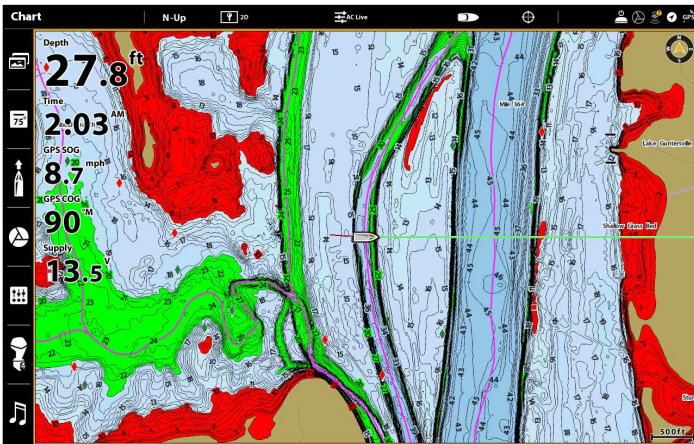
If you're off the water and don't have GPS reception, select Simulator. Also see *Display a Lake* for more information.

2 | Display a Chart View

SOLIX

1. Press the HOME key.
2. Select **Chart View** from the Favorites bar.

Chart View with LakeMaster Map Card Installed (SOLIX)



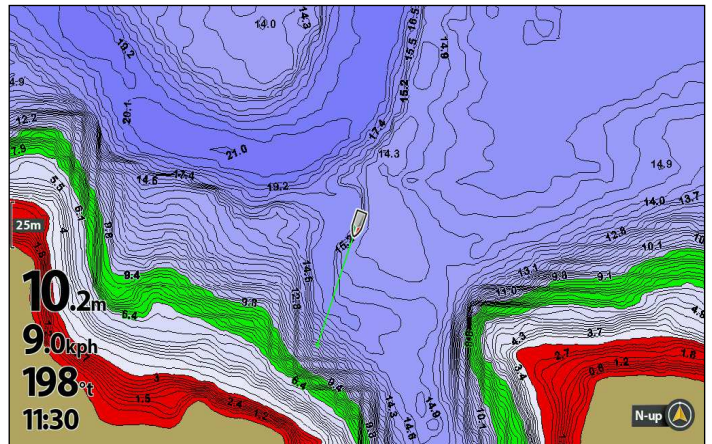
HELIX

1. Press the VIEW key until a Chart View is displayed on-screen.

OR

1. Press and hold the VIEW key to open the **Views X-Press Menu**.
2. Select **Chart > Chart View**.

Chart View with LakeMaster Map Card Installed (HELIX)



Automatic Display: The lake map displayed on the Chart View is based on the latitude/longitude position and the map card installed in the control head, so your current lake will be displayed automatically. GPS reception is required for the correct lake to be displayed.

If your current lake is not displayed, confirm you have GPS reception and that your LakeMaster Map Card is installed. Also, review the Chart Source.

SOLIX

1. Press the HOME key.
2. Select **Settings**.
3. Select **Chart**.
4. Select a Chart Source.

Global: Turn Global on to share the map source with the other control heads in a network.

HELIX

1. **Main Menu:** Press the MENU key twice.
2. Select the **Chart** tab.
3. Select **Map Source**.
4. Select the installed chart card.

Auto: The best available map will be selected automatically.

Also, see *Display a Lake* for more information.

3 | Adjust the Water Level Offset

When you start your trip for the day, it is important to note if the water level is higher or lower than normal. For example, if you know the lake is down 4 feet, set the Water Level Offset to -4.

SOLIX

1. Tap **Chart** in the status bar, or press the MENU key once.
2. Select **Water Level Offset**.
Tap the on/off button, or press the ENTER key, to turn it on.
3. Press and hold the slider, or press and hold the ENTER key, to adjust the setting.

If the water level is higher than normal, set a positive amount.

If the water level is lower than normal, set a negative amount.

If the water level has not changed [normal], turn off Water Level Offset.

HELIX

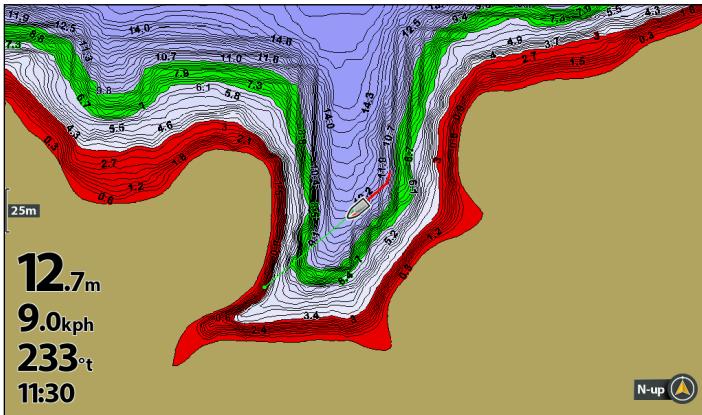
1. **Main Menu:** Press the MENU key twice. Select the **HB Chart** tab.
2. Select **Water Level Offset**.
3. Use the RIGHT or LEFT Cursor keys to adjust the setting.

If the water level is higher than normal, set a positive amount.

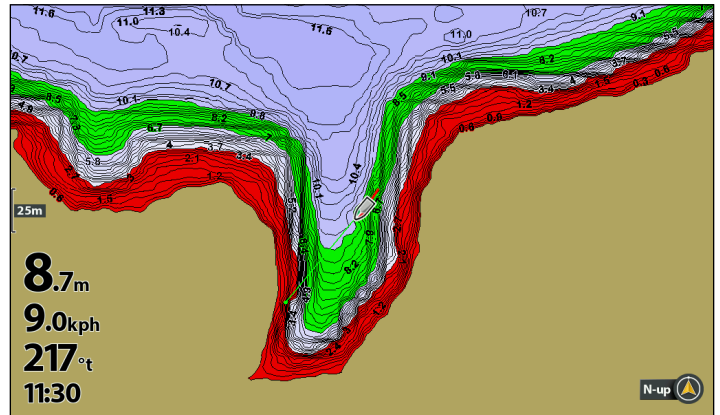
If the water level is lower than normal, set a negative amount.

If the water level has not changed [normal], set Water Level Offset to [0] zero.

Water Level Offset Set to 0 (Off) (HELIX)



Water Level Offset Adjusted to -4 (HELIX)

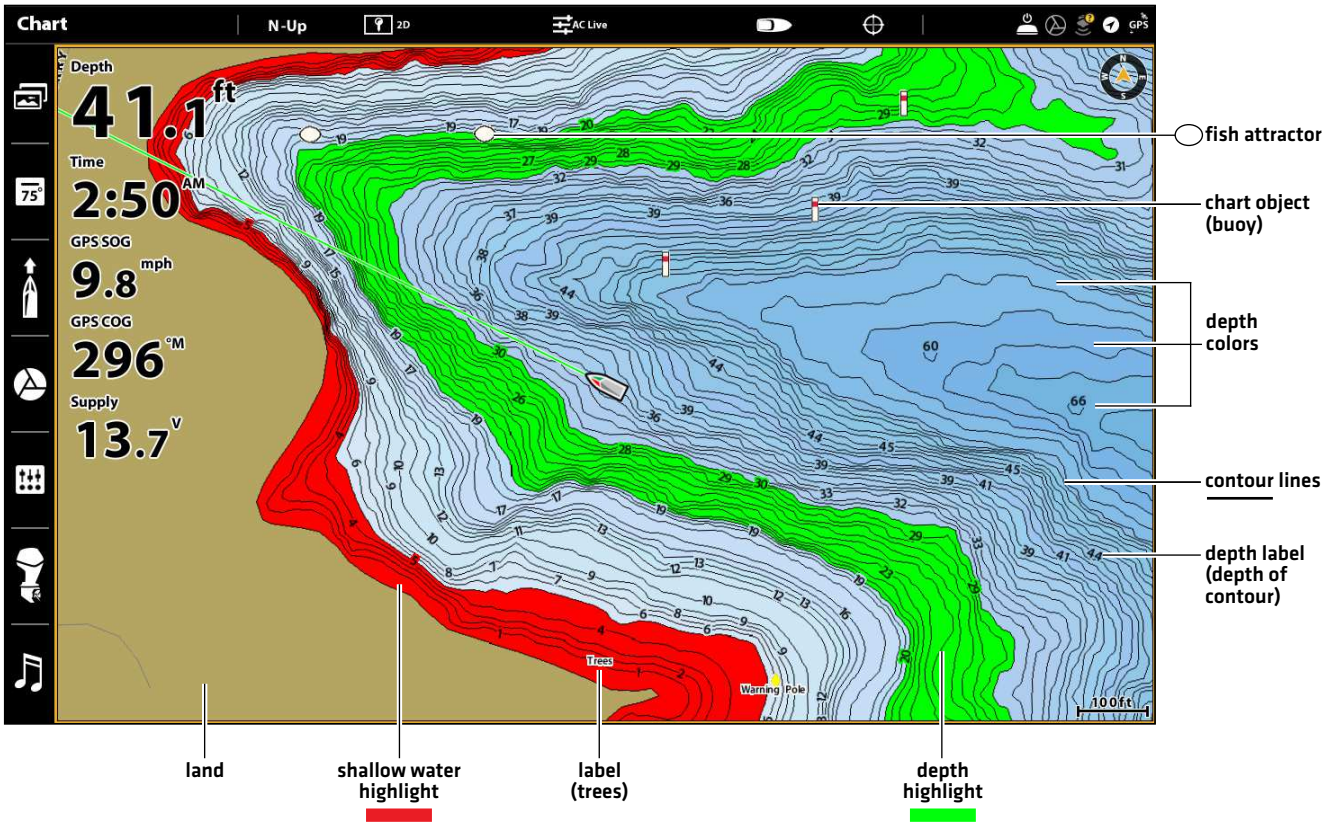


If the water is lower than normal, set the Water Level Offset to a negative number, and the land will extend visually on the map (as shown above). If the water is higher than normal, set the Water Level Offset to a (+) positive amount, and the water line will extend visually on the map.

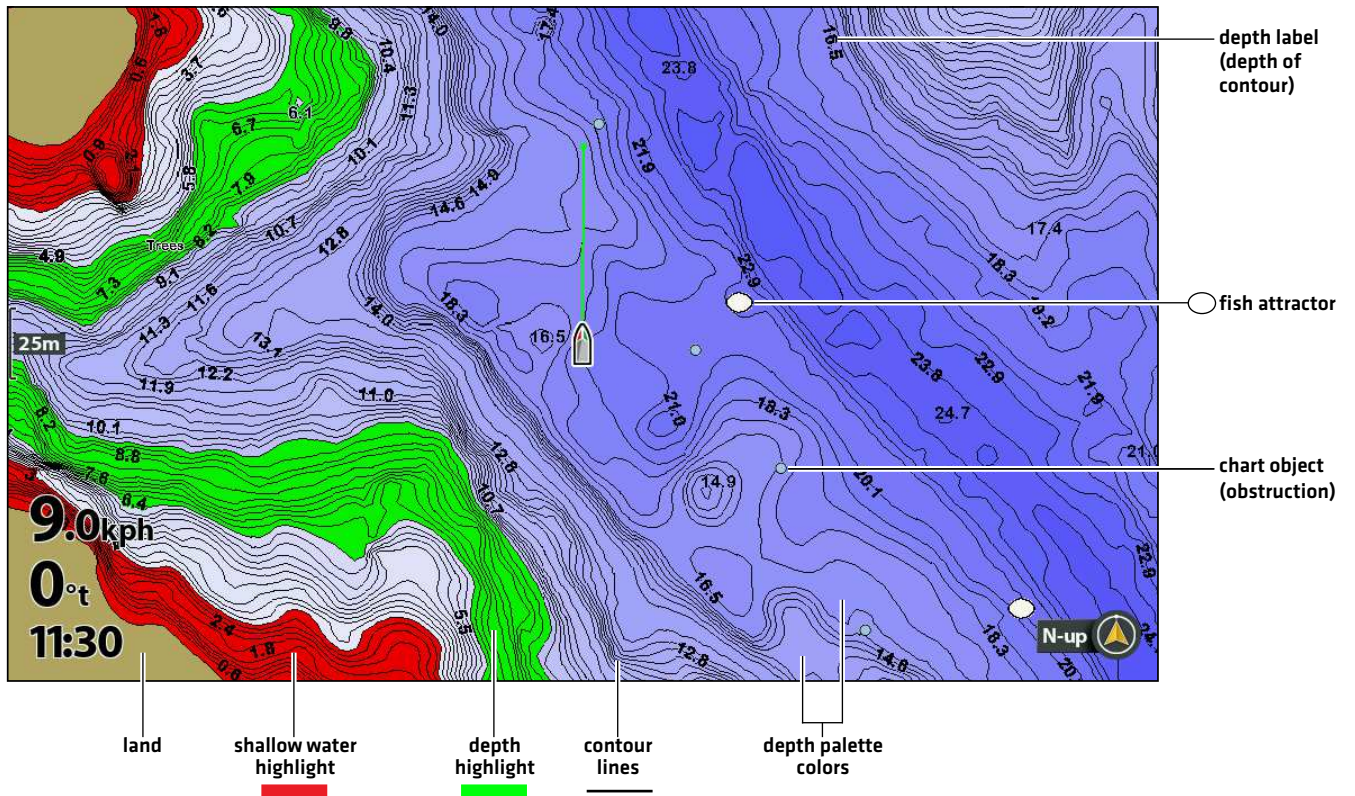
WHAT'S ON THE MAP

The installed LakeMaster Map Card provides multiple colors and icons to help you identify depth, contours, and fish attractions on the map.

What's on the LakeMaster Map (SOLIX)

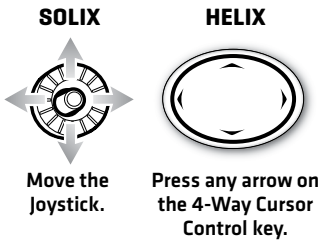


What's on the LakeMaster Map (HELIX)



Tips for Using the Map

In addition to the chart and navigation features available with your Humminbird control head, use the following tips with your LakeMaster Map Card.



Move Across the Chart

Move the Joystick [SOLIX] or press any arrow on the 4-WAY Cursor Control key [HELIX] to move the cursor across the chart.

Optional: Press the -ZOOM key repeatedly to zoom out. Move the Joystick [SOLIX] or press any arrow on the 4-WAY Cursor Control key [HELIX] to move the cursor across the chart.



See More on the Chart

Zoom in [+] and Zoom out [-] to see more of the chart display [contour lines, depth colors, etc.].



View Map Information

Move the cursor to an icon [buoy, marker, etc.], contour line, or position on the chart, and press the CHECK/INFO key. If you have a SOLIX control head and the cursor is not snapped to an object, press the CHECK/INFO key a second time or select Map Info from the Info Menu.

Change the Chart Orientation

Select your display preference: North-Up, Head-Up, Course-Up, etc.

SOLIX

1. From the Chart X-Press Menu, select **Chart Options**.
2. Select **General > Orientation**.
3. Select an orientation to apply to the chart.

HELIX

1. **Main Menu:** Press the MENU key twice.
2. Select the **Chart** tab.
3. Select **Chart Orientation**.
4. Select an orientation to apply to the chart.

Head Up	The vessel's current heading points up, and the chart rotates around the vessel icon so that it always points up on the view. The heading is provided by the connected compass/heading sensor. If a compass is not connected, the vessel will be oriented according to the COG [Course Over Ground].
North Up	The chart is oriented with North up on the display, and the vessel rotates according to its heading or COG [Course Over Ground].
COG Up [SOLIX only]	The chart is displayed with the vessel oriented in a fixed position pointing up, and the chart rotates according to the vessel COG [Course over Ground].
Course Up	During navigation, the intended course or route leg is shown at the top of the view. Objects ahead of the vessel are drawn above the vessel. When the vessel is not navigating, the current heading is displayed.

ADJUST THE MAP DISPLAY SETTINGS

When you install a LakeMaster Map Card or LakeMaster PLUS Map Card, menu options are added to your control head. You can display or hide contour lines, highlight shallow water, and highlight a depth range on the map.

Open the Humminbird Settings Menu (SOLIX only)

1. From the **Chart X-Press** Menu, select **Chart Options**.
2. Select **Humminbird Settings**.

Open the HB Chart Menu Tab (HELIX only)

1. **Main Menu:** Press the MENU key twice.
2. Select the **HB Chart** tab.

Display/Hide Contour Lines

Display or hide the water contour lines in Chart views. This feature is also affected by the Water Level Offset setting.

SOLIX

1. From the **Humminbird Settings** Menu, select **Contour Intervals**.
2. Tap the on/off button, or press the ENTER key, to show or hide contour lines.

HELIX

1. From the **HB Chart** tab, select **Contour Lines**.
2. Press the CHECK/INFO key or the RIGHT Cursor key to display or hide contour lines [check mark = visible, blank = hidden].

Turn on Depth Colors

Set the depth shading in the Chart Views to Off or shaded based on the setting you select.

SOLIX

1. From the **Humminbird Settings** Menu, select **Depth Colors**.
2. Press and hold the slider, or press and hold the ENTER key, to adjust the setting [0 = off].

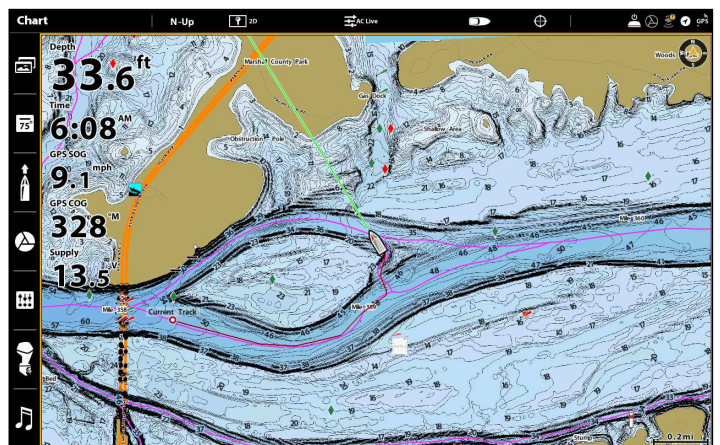
HELIX

1. From the **HB Chart** tab, select **Depth Colors**.
2. Press the RIGHT or LEFT Cursor keys to adjust the setting [0 = off].

Depth Colors OFF (SOLIX)



Depth Colors ON (SOLIX)



Highlight a Depth Range

Depth Highlight allows you to identify a depth range in the Chart views. The depth range you set is highlighted in green on the chart.

HELIX users can set a minimum and maximum depth range. SOLIX users can adjust the range on each side of a selected depth using Depth Highlight Range. For example, if you know a certain fish is holding at 18 to 20 feet, you can set the Depth Highlight to 19 feet and the Depth Highlight Range to +/- 1 foot. The view will show a green band from 18 to 20 feet.

SOLIX

1. From the **Humminbird Settings** Menu, select **Depth Highlight**.
2. Tap the on/off button, or press the ENTER key to show or hide depth highlights.
3. Press and hold the slider, or press and hold the ENTER key, to adjust the setting.
4. Select **Highlight Range [+/-]**.
5. Press and hold the slider, or press and hold the ENTER key, to adjust the setting.

HELIX

1. From the **HB Chart** tab, select **Highlight 1**.
2. Press the CHECK/INFO key or the RIGHT Cursor key to show or hide depth highlights [check mark = visible, blank = hidden].
3. With Highlight 1 turned on, set your desired depth range by selecting **Highlight 1 Min** or **Highlight 1 Max**.
4. Press the RIGHT or LEFT Cursor key to adjust the setting.

Highlight a Shallow Water Range

When the depth is equal to or less than the amount you set, it will be highlighted in red on the Chart View.

For example, if your boat has a draft of 3 feet, set the Shallow Water Highlight to 3 feet, and a red band from 0 to 3 feet will be shown on the map.

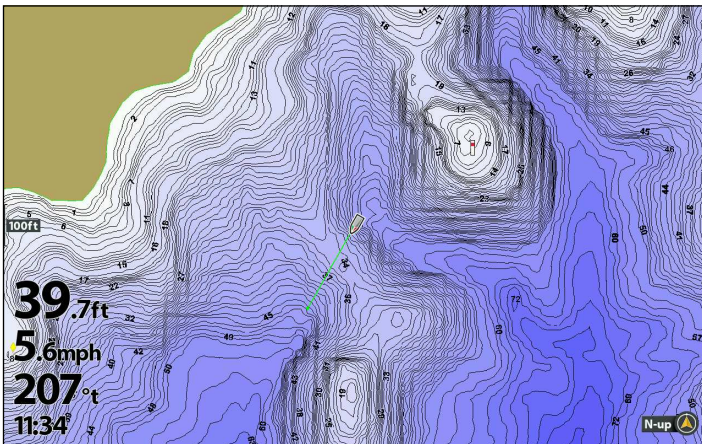
SOLIX

1. From the **Humminbird Settings** Menu, select **Shallow Water**.
2. Tap the on/off button, or press the ENTER key, to show or hide shallow water highlights.
3. Press and hold the slider, or press and hold the ENTER key, to adjust the highlighted depth level.

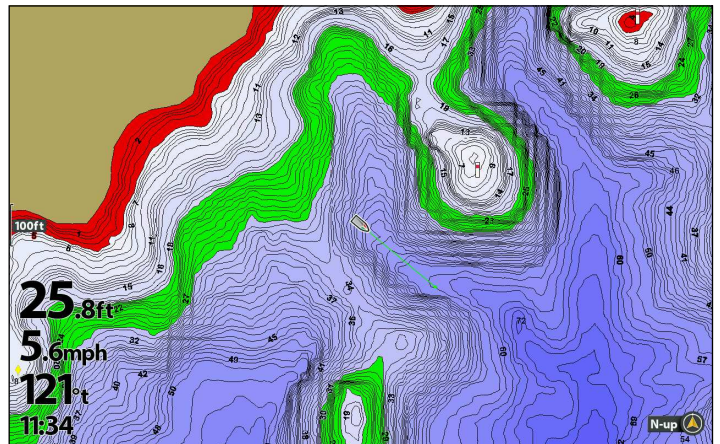
HELIX

1. From the **HB Chart** tab, select **Shallow Water Highlight**.
2. Press the CHECK/INFO key or the RIGHT Cursor key to show or hide depth highlights [check mark = visible, blank = hidden].
3. To adjust the highlighted depth level, select the second **Shallow Water Highlight** menu option.
4. Press the RIGHT or LEFT Cursor keys to select a depth.

Highlights OFF (HELIX)



Highlights ON (HELIX)



DISPLAY AERIAL IMAGERY

(LAKEMASTER PLUS MAP CARD ONLY)

If you have a LakeMaster PLUS Map Card, you can add a base layer that shows aerial imagery for land and water in various combinations with your map.

Required: LakeMaster PLUS Map Card installed, control head software version 7.460 or later.

Display Aerial Imagery

Use the following instructions to change the Base Layer for the Chart View. The selected Base Layer will also be applied to the Chart windows in Chart Combo Views.

Change the Base Layer for the Chart View

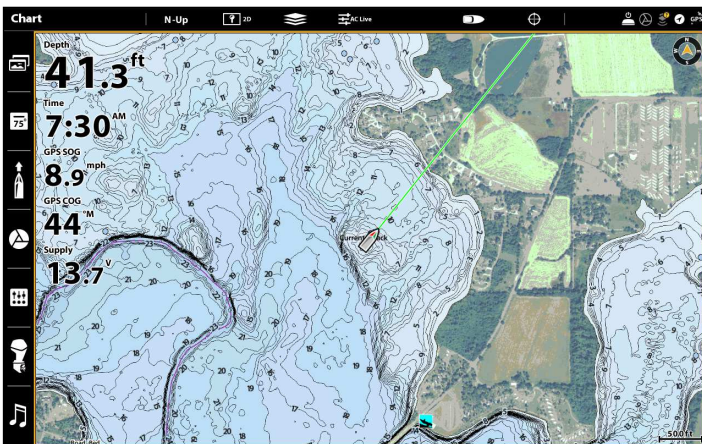
SOLIX

1. From the **Chart X-Press** Menu, select **Chart Options**.
2. Select **Humminbird Settings**.
3. Select **Base Layer**.
4. Tap or press the ENTER key to select a Base Layer.

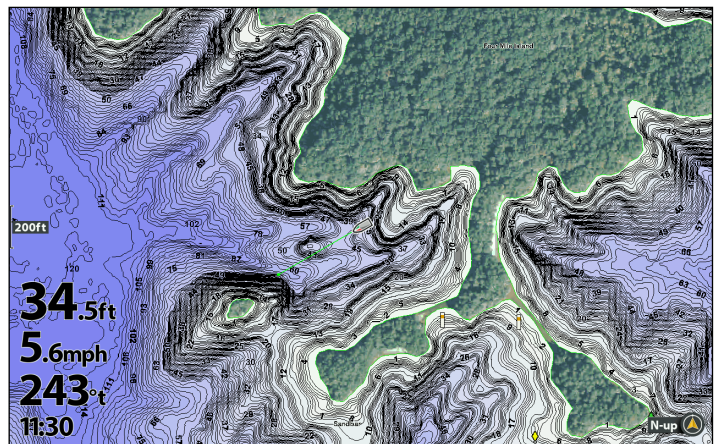
HELIX

1. From the **HB Chart** Menu, select **Base Layer**.
2. Press the UP or DOWN Cursor keys to select a Base Layer.
3. Press the RIGHT Cursor key to activate it.

Base Map with Aerial Displayed (SOLIX)



Base Map with Aerial Displayed (HELIX)




Change the Base Layer for the Chart Combo View (SOLIX models only)

In the Chart/Chart Combo View, you can display a different Base Layer in each window. This setting is available in Custom Mode.

Change the User Mode

The SOLIX control head is automatically set to Angler Mode [recommended], which is configured with the best settings for a wide range of fishing conditions. To access in-depth customization menu options, set the user mode to Custom.

 **NOTE:** Export your menu settings and radar settings to an SD or microSD card before changing setting in Custom mode. See you control head operations manual for more information.

1. Press the HOME key.
2. Tap **Settings**.

OR

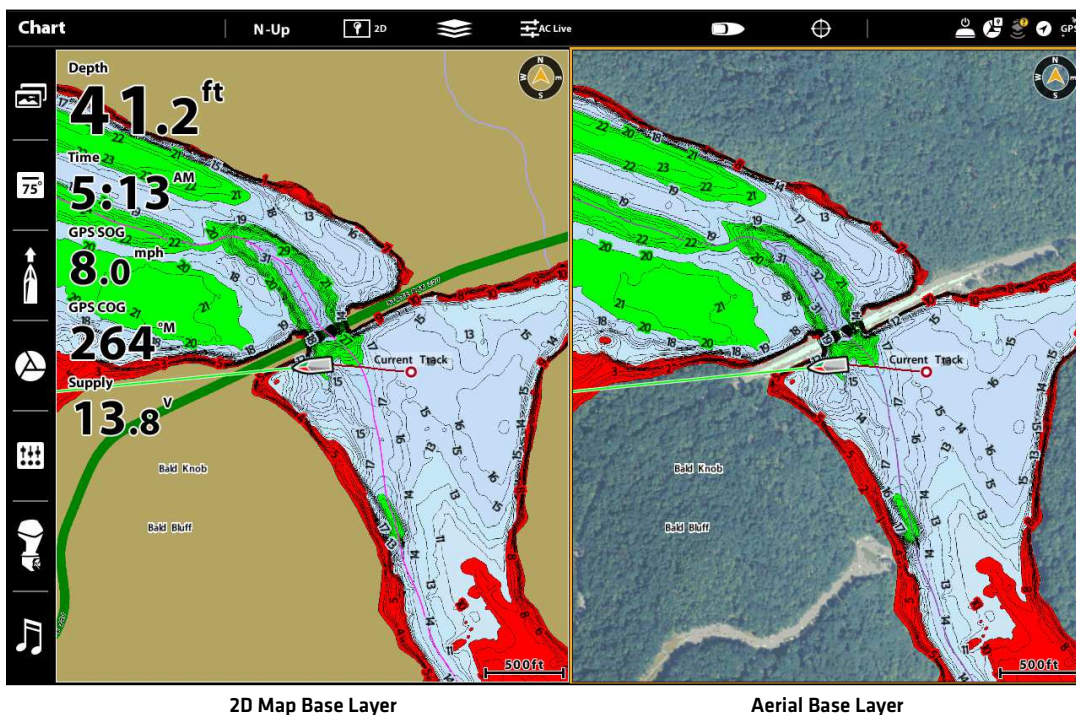
Use the Joystick to select **Settings**. Press the ENTER key.

3. Select **General**.
4. Under User Mode, select **Angler** or **Custom**.

Change the Base Layer for the Chart Combo Views

1. With the Chart/Chart Combo View displayed on screen, select a pane.
2. Tap **Chart** in the status bar, or press the MENU key once.
3. Select **Chart Options**.
4. Select **Global** [below Humminbird Settings].
5. Tap the on/off button, or press the ENTER key, and follow the prompt to turn Global off.
6. Select **Humminbird Settings** > **Base Layer**.
7. Tap, or use the Joystick and ENTER key, to select a base layer.

Chart/Chart Combo View



2D Map Base Layer

Aerial Base Layer

DISPLAY A LAKE

The lake map displayed on the Chart View is based on the latitude/longitude position and the map card installed in the control head. GPS reception is required for the correct lake to be displayed.

The **Lake List** menu option allows you to display a different lake from the installed LakeMaster Map Card. When you select a lake, the cursor will move to the lake so you can see it on the Chart View. Then, you can mark waypoints, press the GOTO key to start navigation toward a waypoint, or press the CHECK/INFO key for more information.

No GPS Reception: If you don't have a GPS Fix, you can view the lake in Simulator mode. When you power on the control head, select Simulator from the Start-Up Options Menu. You can mark waypoints and routes and save them in Simulator mode.

Display a Lake

SOLIX

1. From the **Chart X-Press** Menu, select **Info**.
2. Select **Lake List**.

Sort: Tap column headers, or use the Joystick and Enter key, to sort the list. Tap a second time to reverse the order of the lakes listed. You can sort by name, county, size, or identify the high-definition lakes (Hi-Def) on your card, etc.

Scroll: Swipe, or use the Joystick, to scroll through the list.

Cursor To: Select a lake on the list and tap, or press the Enter key.

HELIX

1. From the **HB Chart** Menu tab, select **Lake List**.
2. Press the RIGHT Cursor key.

Sort By: Select the Sort By field, and press the RIGHT or LEFT Cursor keys to select a sort option for the list. You can sort alphabetically or identify the high-definition lakes (Hi-Def) on your card.

Scroll: Press the UP or DOWN Cursor keys to scroll through the list. As each lake is highlighted, you can view information about the lake in the box displayed on the screen.

Cursor To: Select a lake on the list and press the RIGHT Cursor key.

Selecting a Lake to Display (SOLIX)

Name	HD	County	State	Size (acres)	Distance
Acworth	✓	Cobb	GA	272	94
Ajay	✓	Orange	FL	94	496
Allatoona	✓	Cherokee	GA	11316	95
Alligator	✓	Osceola	FL	3462	504
Arkabutla	✓	DeSoto	MS	14501	217
Bankhead	✓	Walker	AL	8022	73
Barkley	✓	Trigg	KY	48628	192
Beresford	✓	Lake	FL	2211	461
Bill Waller	✓	Marion	MS	178	292
Blue Ridge	✓	Fannin	GA	3170	119
Bogue Homa	✓	Jones	MS	898	239
Brick	✓	Osceola	FL	623	506
Brushy	✓	Washington	MS	13	279
Cairo	✓	Ballard	KY	8382	250

Selecting a Lake to Display (HELIX)

Sort By

Hi-Def

Acworth

Ajay

Allatoona

Alligator

Arkabutla

Bankhead

Barkley

Beresford

Bill Waller

Blue Ridge

Bogue Homa

Brick

Brushy

Cobb County

Hi-Def ProMap, 272 Acres

FOLLOW THE CONTOUR

Follow the Contour allows you to navigate a depth contour using i-Pilot® Link (separate purchase required). You can select a contour line and follow it in either direction, or use the Contour Offset feature to stay a set distance from a contour line or shoreline.

When you start i-Pilot Link navigation to Follow the Contour, all other types of navigation are stopped on the Humminbird control head and the Ethernet network.

Required: i-Pilot Link with a ZeroLine Map Card or i-Pilot Compatible LakeMaster Map Card. To purchase i-Pilot Link, and for more information, visit our Web site at humminbird.com or contact Humminbird Customer Service.



WARNING! See your i-Pilot Link manual for warnings, safety information, and operations instructions. You are responsible for the safe and prudent operation of your boat. The i-Pilot Link is designed to be an accurate and reliable tool that will enhance boat operation and improve your ability to catch fish. This product does not relieve you from the responsibility for safe operation of your boat. You must avoid hazards to navigation and always maintain a permanent watch so you can respond to situations as they develop. You must always be prepared to regain manual control of your boat. Learn to operate your i-Pilot Link in an area free from hazards and obstacles.

1 | Preparation

Before you use Follow the Contour, contour lines should be displayed on the Chart View and the Water Level Offset must be set.

1. Adjust the Water Level Offset

When you start your trip for the day, it is important to note if the water level is higher or lower than usual. For example, if you know the lake is down 3 feet, set the Water Level Offset to -3.

SOLIX

1. Tap **Chart** in the status bar, or press the MENU key once.
2. Select **Water Level Offset**.
Tap the on/off button, or press the ENTER key, to turn it on.
3. Press and hold the slider, or press and hold the ENTER key, to adjust the setting.

If the water level is higher than normal, set a positive amount.

If the water level is lower than normal, set a negative amount.

If the water level has not changed (normal), turn off Water Level Offset.

HELIX

1. **Main Menu:** Press the MENU key twice. Select the **HB Chart** tab.
2. Select **Water Level Offset**.
3. Use the RIGHT or LEFT Cursor keys to adjust the setting.

If the water level is higher than normal, set a positive amount.

If the water level is lower than normal, set a negative amount.

If the water level has not changed (normal), set Water Level Offset to [0] zero.

2. Set Contour Lines to Visible

SOLIX

1. From the **Chart X-Press** Menu, select **Chart Options**.
2. Select **Humminbird Settings > Contour Intervals**.
3. Tap the on/off button, or press the ENTER key, to show or hide contour lines.

HELIX

1. **Main Menu:** Press the MENU key twice. Select the **HB Chart** tab.
2. Select **Contour Lines**.
3. Press the CHECK/INFO key or the RIGHT Cursor key to show or hide contour lines (check mark = visible, blank = hidden).

3. Set the Contour Offset

You can set Contour Offset to maintain a set distance from a contour line. If you want to navigate along a bank or shoreline, use Contour Offset to maintain a safe distance from the shoreline. Contour Offset is a distance setting only, and does not measure water depth. Enter the Contour Offset based on your knowledge of the water depth in your current area.

No Offset: If you want to navigate the contour without an offset, you can skip this section.

During Navigation: Contour Offset can be adjusted while Follow the Contour navigation is in progress by selecting Contour Offset from the Go To menu.

⚠ WARNING! Contour Offset does NOT account for changes in water depth. It is important to be aware of depth variations in your current area and adjust the Contour Offset as needed.

To set the Contour Offset, your boat must be positioned within **1/4 mile** of the selected contour.

SOLIX

1. Press and hold a position on the contour line you plan to follow.

OR

Use the Joystick to move the cursor to select a contour line.

2. Select **Go To > Follow the Contour**.
3. Select **Contour Offset**. Drag the slider, or press and hold the slider, to adjust the offset.

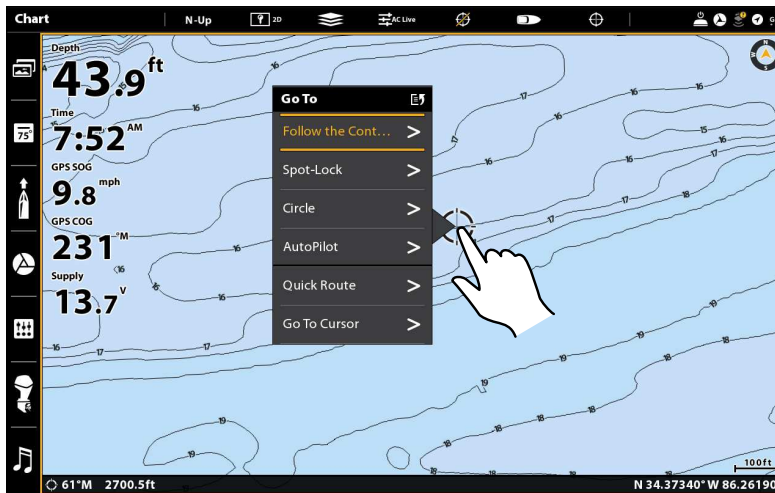
To remove the offset, set the offset to 0 [off].

HELIX

1. Use the 4-WAY Cursor Control key to move the cursor to the contour line you plan to follow. Press the GOTO key.
2. Select **Follow the Contour**. Press the RIGHT Cursor key.
3. Select **Contour Offset**.
4. Press the RIGHT or LEFT Cursor keys to adjust the offset amount.

To remove the offset, set the offset to 0 [off]

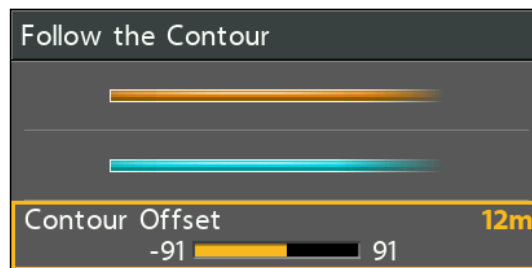
Setting the Contour Offset (HELIX)



Setting the Contour Offset (SOLIX)



Setting the Contour Offset (HELIX)



2 | Start Follow the Contour Navigation

You can start i-Pilot Link navigation if the boat position is within **1/4 mile** of the selected contour.

⚠ WARNING! If the selected contour is a shoreline, set the Contour Offset. See **Preparation: Set the Contour Offset**.

⚠ WARNING! Contour Offset does NOT account for changes in water depth. It is important to be aware of depth variations in your current location and adjust the Contour Offset as needed.

📝 NOTE: When the i-Pilot Link is following the contour, the Current Track is not saved and iTracks cannot be recorded.

SOLIX

1. Press and hold a position on the contour line you plan to follow.

OR

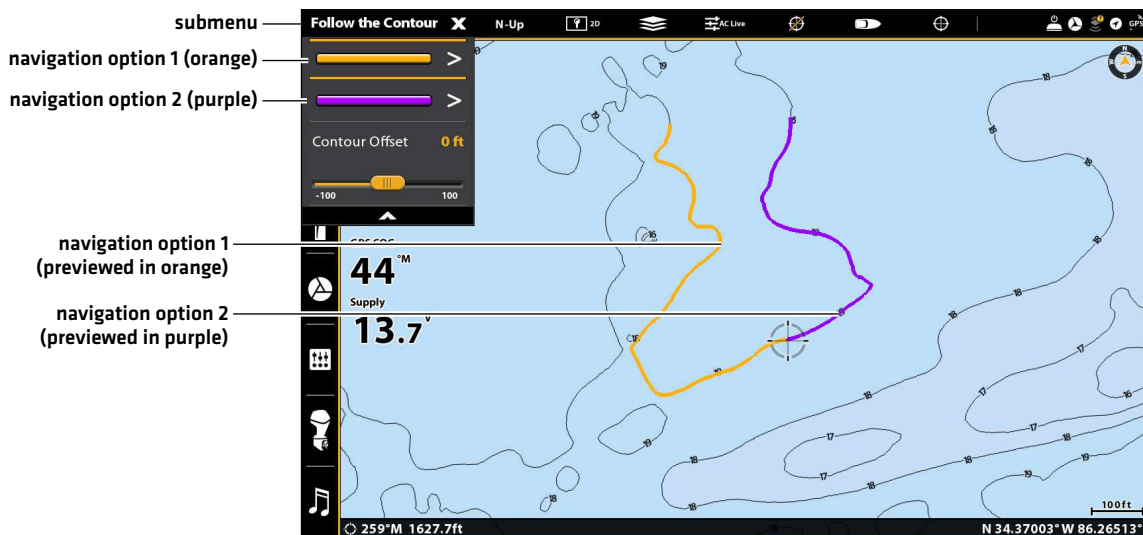
Use the Joystick to move the cursor to select a contour line.

2. Select **Go To > Follow the Contour**.
3. Select a navigation direction from the submenu.
The navigation direction is previewed in orange or purple on the Chart View.
4. Power on the i-Pilot motor to begin navigation. Refer to the i-Pilot Link manual for additional information.

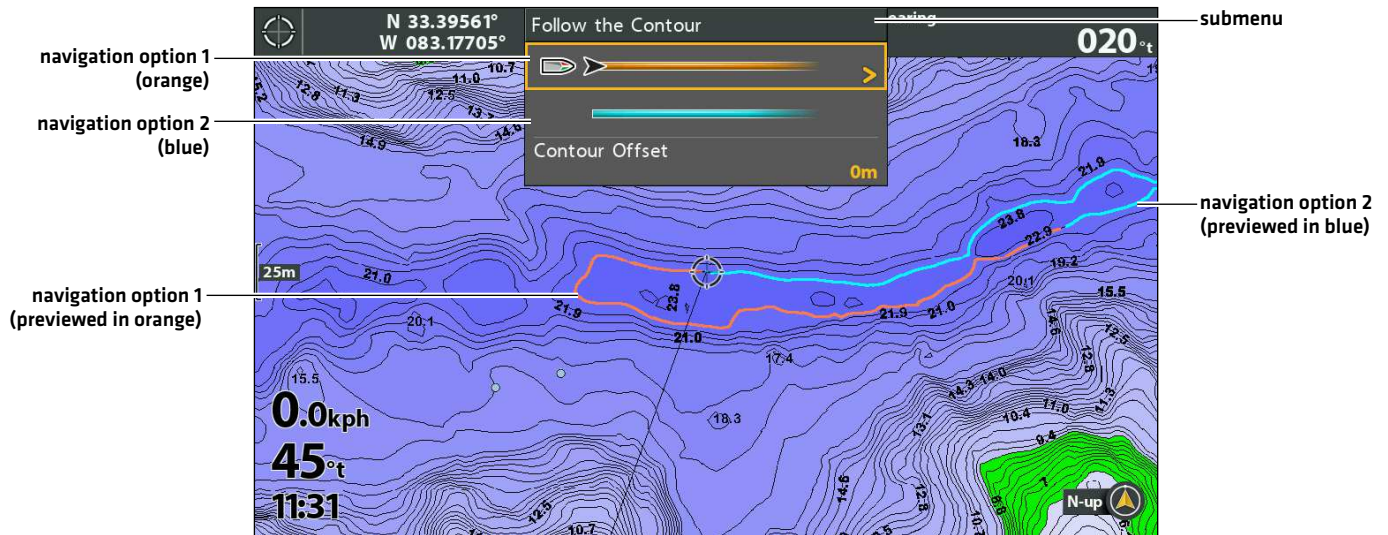
HELIX

1. **Open the Follow the Contour Submenu:** Use the 4-WAY Cursor Control key to move the cursor to the contour line you plan to follow. Press the GOTO key.
2. Press the UP or DOWN Cursor keys to select a navigation direction. The navigation direction will be previewed in orange or blue in the Chart View.
3. Press the RIGHT Cursor key.
4. Power on the i-Pilot motor to begin navigation. Refer to the i-Pilot Link manual for additional information.

Starting Follow the Contour Navigation (SOLIX)



Starting Follow the Contour Navigation (HELIX)



Adjust the Contour Offset during Navigation

SOLIX

1. Tap **Chart** in the status bar.
2. Select **Go To > Contour Offset**.
3. Drag the slider, or press and hold the slider, to adjust the offset.

To remove the offset, set the offset to 0 [off].

HELIX

1. Press the GOTO key.
2. Select **Contour Offset**.
3. Press the RIGHT or LEFT Cursor keys to adjust the offset.
4. To remove the offset, set it to [0] zero.

Reverse Direction

SOLIX

1. Tap **Chart** in the status bar.
2. Select **Go To > Reverse**.

HELIX

1. Press the GOTO key.
2. Select **Reverse Direction**. Press the RIGHT Cursor key.

Cancel i-Pilot Navigation

Use the following instructions to cancel i-Pilot navigation.

SOLIX

1. Tap **Chart** in the status bar.
2. Select **Go To > Cancel Navigation**.

HELIX

1. Press the GOTO key.
2. Select **Cancel Navigation**. Press the RIGHT Cursor key.
3. Follow the on-screen prompts to cancel navigation.

SAVE AND EXPORT NAVIGATION DATA

When you mark waypoints or save routes, tracks, and groups, they are saved to the control head. Then, you can export this navigation data to an SD/microSD card. Navigation data cannot be saved to your LakeMaster Map Card.



WARNING! Do NOT export navigation data [waypoints, routes, tracks, etc.] to your LakeMaster Map Card. Saving data to your map card will permanently damage it.

Export Navigation Data to a Blank SD/microSD Card

SOLIX

1. Remove the LakeMaster Map Card.
Press the card into the slot to release it. Carefully remove it from the slot.
2. Insert a blank, unlocked SD/microSD card into the control head card slot.
3. Press the HOME key.
4. Select the **Files** tool.
5. Under **Export**, select **Nav Data**.
6. **Select a Save Location:** Select the port where the SD card is installed.
All saved navigation data will be exported to the selected location.
7. See your control head operations manual or Waypoint Management Guide for more information. These manuals are available on the CD provided with your control head, or you can download them from our Web site at humminbird.com.

HELIX

1. Remove the LakeMaster Map Card.
Press the card into the slot to release it. Carefully remove it from the slot.
2. Insert a blank, unlocked SD/microSD card into the control head card slot.
3. Press the MENU key twice to open the **Main Menu**.
4. Press the RIGHT Cursor key until the **Navigation** tab is selected.
5. Press the DOWN Cursor key to select **Waypoints, Routes, Tracks**.
6. Press the RIGHT Cursor key to open the **Waypoint Management** dialog box.
7. Select **Options > Select All and... > Export**.
8. Follow the on-screen instructions to confirm or cancel the export.
9. See your control head operations manual or Waypoint Management Guide for more information. These manuals are available on the CD provided with your control head, or you can download them from our Web site at humminbird.com.

CONTACT HUMMINBIRD

Contact Humminbird Technical Support in any of the following ways:

Web site:

humminbird.com

E-mail:

service@humminbird.com

Telephone:

1-800-633-1468

Direct Shipping:

Humminbird
Service Department
678 Humminbird Lane
Eufaula, AL 36027 USA

Hours of Operation:

Monday - Friday

8:00 a.m. to 4:30 p.m. [Central Standard Time]

Social Media Resources:



[Facebook.com/HumminbirdElectronics](https://www.facebook.com/HumminbirdElectronics)



[Twitter.com \[@humminbirdfish\]](https://twitter.com/humminbirdfish)



[Instagram.com/humminbirdfishing](https://www.instagram.com/humminbirdfishing)



[YouTube.com/humminbirdtv](https://www.youtube.com/humminbirdtv)

