



AUTOCHART GETTING STARTED GUIDE

532260-1_B

Program overview	3
The Main view/tab	3
Edit tabs.....	4
Help tabs.....	4
The Chart File Index.....	4
The basics	4
LakeMaster maps and map data	5
Your custom LakeMaster maps.....	5
Map Coverage.....	5
Using a local copy of the regional map	6
Using your custom maps on your Humminbird unit.....	6
Recording data on your Humminbird unit	6
To use the track log to record data for AutoChart	6
To use the sonar recording feature to record data for AutoChart	7
Mapping tutorial	8
Step 1: Import and display the first file.....	8
Step 2: Make your first map.....	11
Step 3: Make your first LakeMaster map	12
Step 4: Adding more data files to your lake and improving the map	12
Step 5: Practical guidelines for the fisherman	14
Live data	15
Ethernet Setup.....	15
NMEA 0183 Setup	16
Settings in AutoChart using live data	17
Tips and tricks	18
Background Maps	18
Editing data.....	18
Waypoints.....	18
Water level and tide compensation.....	18
Creating contour lines or marking features with tracks	19
Create tracks for i-Pilot Link	19
X/Y/Tilt/Latency	20



NOTE: Visit our Web site at humminbird.com to download the AutoChart Installation and Operations Guide.

360 Imaging™, AutoChart™, AutoChart PRO™, AutoChart Zero Lines™ SD Card, Humminbird®, i-Pilot® Link™, LakeMaster®, Matrix®, SI™, and Side Imaging® are trademarked by or registered trademarks of Johnson Outdoors Marine Electronics, Inc.

Navionics® is a registered trademark of Navionics.

© 2013 - 2015 Johnson Outdoors Marine Electronics, Inc. All rights reserved.

PROGRAM OVERVIEW

AutoChart uses a tabbed user interface [you will not see the tabs until you have more than one on display]. There is one **Main** tab that will hold all your mapping resources. You can have multiple **Edit** tabs and **Help** tabs containing help and documentation.

If you wish you can split the display to see data and help side by side, simply right click a tab for options.

The Main view/tab

When you start AutoChart you will be greeted by the **start screen**:



The start screen includes:

- A world map with information on all your data files
- Quick access icons for the most frequently used functions.

The start screen does not display your detailed data. It simply shows where you have data, and what files you have.

To view the actual data you will need to leave the start screen view and enter the main mapping view. To do this, AutoChart needs to know the location to map. Set the location one of these ways:

- Right click a location on the start page map and select **Map here**.
- Open the **Waypoint manager**, select a waypoint and click the **Map here** button.
- Receive live data. When the first valid position is received the mapping location will be set automatically.

- Open an individual file **Open** [start page icon or menu **File/Open**].

With any of the above, AutoChart will initiate a geographically referenced **Internal Map** that will be used to handle your custom mapping. You can think of the internal Map as a drawing canvas. The AutoChart PRO version will also have drawing canvases for bottom hardness and Side Imaging mosaic.

If you have more than one tab on display in AutoChart [for example Help or Edit tabs, see below] both the start screen and the main mapping view will be displayed in the **Main** tab. There can only be one Main tab, and the Main tab cannot be closed.

Edit tabs

You can open individual files for editing in new tabs using **File/Open [Edit Only Tab]**. An **Edit** tab does not allocate memory for mapping, and you can have as many Edit tabs open as you like. For example, if you trace a data point to file in the main tab, it will open in a new Edit tab. You can add individual files or a database to view as a reference, just like in the Main tab, and you can display background maps and waypoints.

Help tabs

Help documents [such as this guide] will display in separate tabs.

The Chart File Index

A central feature of AutoChart is the **Chart File Index [CFI]**. The CFI is a listing of all your data files that AutoChart uses to display content on the start screen, and to load the right data when you start mapping.

- A default Chart File Index is already setup when you start AutoChart the first time.
- All your imported files, and all of the files you record with a live data connection, will be added to this CFI.

The basics

If you will be using AutoChart off the water with logged data, this is the basic work flow:

1. Record data on the water.
2. Import the log file.
3. Make a new updated map by combining all the data you have [your new log as well as all previous data].
4. Save/update your LakeMaster map.

Please see the **Recording data on your Humminbird unit** and the **Mapping tutorial** sections below for more information.

If you will be using AutoChart with live data, please see the **Live data** section. It is also recommended to read the **Mapping tutorial** section for a basic orientation.

LAKEMASTER MAPS AND MAP DATA

AutoChart uses two different LakeMaster maps:

- A worldwide base map. This map will be installed with the program.
- A regional AutoChart map with shorelines. This map comes on the AutoChart Zero Lines SD card. This map is used as the basis for your own custom LakeMaster maps that you will create for your Humminbird unit.

AutoChart will use the world map at course zoom levels and the regional map when zoomed in. Each map is located in a folder named **LkMaster**. It is important to keep this folder name intact! While the folder name is the same for any LakeMaster map, the actual content is not.

Your custom LakeMaster maps

When you generate your own LakeMaster depth map, a new map folder will be created on your SD card (the drive letter E may be different on your PC):

E:\AC\LkMaster

In the same way, when you generate your own LakeMaster SI mosaic map the content will be generated in this folder:

E:\SI\LkMaster

You can select which regional map to display in AutoChart from the background map settings:
Tools/Settings/Background Map.

Map Coverage

Each custom map has a limited coverage area [ca 1000x1000km]. This area is large enough for the needs of most users, but if you try to add new content outside this area [which was setup when you first added data], you will get an error message. To be able to make a LakeMaster map of this new area you must start a new custom map. To do this, simply rename the **AC** folder to **AC1**, **AC2** or **AC3**. For SI data, rename **SI** folder to **SI1**, **SI2** or **SI3**.

For example, if you have previously created a map in folder

E:\AC\LkMaster

and now want to add content that does not fit into the existing map, rename the map to

E:\AC1\LkMaster

When you then create a custom map from the new area a new **AC** folder will be created and you will have two custom depth maps on your card:

E:\AC\LkMaster

E:\AC1\LkMaster

If you later want to add new map data to the first map you created, which now is called **AC1**, rename the folders such that the first map is again **AC**, and the second is **AC1** [or **AC2/ AC3**].


Using a local copy of the regional map


With the default settings in AutoChart, the AutoChart SD card must be present to display the regional map, or to create custom maps. You do not need to specify the location/drive for the SD card, AutoChart will find the card for you.

You can also create a local copy of the regional map on your hard drive:

1. Copy the **LkMaster** folder from the SD card to a place on your hard drive, for example to C:\LakeMaster\LkMaster. Make sure to leave the original **LkMaster** folder on the SD card!
2. In AutoChart, go to **Tools/Settings/LakeMaster**. In the **AutoChart [regional] map** group box, select **Use local copy** and use the **Browse** button to select the local copy folder.

AutoChart will now use the local copy for displaying background maps, and custom maps you create will also go to this local storage. For example, if the local copy resides in C:\LakeMaster\LkMaster, a custom depth map will be generated in C:\LakeMaster\AC\LkMaster.

 **Important:** If you select to use a local copy of the regional map, you **MUST** manually copy you custom maps back to the original SD card in order to be able to use those maps on your Humminbird unit. For example, if your custom depth map was generated to C:\LakeMaster\AC\LkMaster, copy the AC folder including all its content to the root of the SD card.

 **Important:** Your custom maps will **ONLY** work on the original AutoChart Zero Lines SD card. If you place the map data on a different card the maps will not work on your Humminbird unit.

Using your custom maps on your Humminbird unit

When you insert your AutoChart SD card into your Humminbird unit, the unit will recognize the AutoChart card and you will have options in the Chart menu to select which one of your maps you want to display [requires unit firmware 6.85 or newer], and which map you want to use as a transparent overlay.

RECORDING DATA ON YOUR HUMMINBIRD UNIT

You can use all Humminbird combo GPS/fish finders with an SD card slot [such as some 300/500/700 and the 800/900/1100 series devices, including the side imaging units] to log data for AutoChart. You have two options: use the track log, or use the sonar recording feature. The track log will result in smaller files than sonar logs, but will not include data to get bottom hardness. To be able to get bottom hardness you must record sonar data.

To use the track log to record data for AutoChart

- Set the track point interval to 1s [on the unit: **Nav->Trackpoint Interval**, set to 1second]. Start from a new track when you take off for the day [if you want to see the old track save it to the track memory first].
- **Important:** the track log memory is limited to about 20000 points. At 1 seconds track point interval the memory will last about 6 hours. After this, the memory will wrap and start overwriting the oldest data. If you are out for more than 6 hours, you will need to save the current track and start over from an empty track again in order not to lose data.

When you are done for the day, before turning off the unit:

- Save the current track [on the unit: **Nav->Current Track-> Save**].
- Copy the track data to the SD card:
 1. Go to the navigation data management page with **Nav->Waypoints,Routes, Tracks**.
 2. Select **Options->Select All and...->Export**

Your tracks will now be saved to file in the MATRIX folder on your SD card Humminbird .ht format. You can import .ht files directly in AutoChart.

To use the sonar recording feature to record data for AutoChart

To get bottom hardness data you must use this option:

- From the **Snapshot and Recording** view on the unit, press Menu and select **Start Recording**.
- You can stop recording from any view.

The sonar log will be a collection of files/folder structure with .dat/.son/.idx file name extensions. Each recording you make will be given a number and stored in a folder called RECORD on your SD card. A complete recording may for example look like this:

```
RECORD/R00022.DAT  
  
RECORD/R00022/B000.IDX  
  
RECORD/R00022/B000.SON  
  
RECORD/R00022/B001.IDX  
  
RECORD/R00022/B001.SON  
  
RECORD/R00022/B002.IDX  
  
RECORD/R00022/B002.SON  
  
RECORD/R00022/B003.IDX  
  
RECORD/R00022/B003.SON
```

When you import your data into AutoChart you can either choose to import the .DAT file, or the B001.SON file which contains 200kHz down beam data.



Important: ALWAYS keep backup copies of your original recordings and track logs!

While electronics and software are easily replaceable, all those hours you have spent on the water collecting data are not.

MAPPING TUTORIAL


Your AutoChart installation comes with a set of log files [in Humminbird .ht track format] from Kimble Lake in Minnesota. This tutorial will guide you step by step, through the process to generate a complete lake map from those files.


If you have Windows Vista, Windows 7 or Windows 8 you will find those data files in the **Tutorial** folder located at

C:\ProgramData\AutoChart\UserData\Tutorial

If you have Windows XP, you will find the **Tutorial** folder in the AutoChart install folder:

C:\Program Files\Johnson Outdoors Inc\AutoChart\Tutorial

 **NOTE:** If you have a different version of the AutoChart Zero Lines SD card than the North America version, there is a small LakeMaster map [covering the tutorial area] included with the AutoChart installation on your PC, which you can use to work through the tutorial. For details on how to use this map, please see the **Help** file under **Settings->LakeMaster map data settings**. You can open the Help using the Help icon on the start page.

 **NOTE:** If your main goal for using AutoChart is to improve your fishing, please see additional notes under **Step 5** below.

 **NOTE:** The tutorial assumes that AutoChart is running with all default settings in place.

Step 1: Import and display the first file

Start AutoChart and click the **Import** icon on the start page. A file dialog will display:

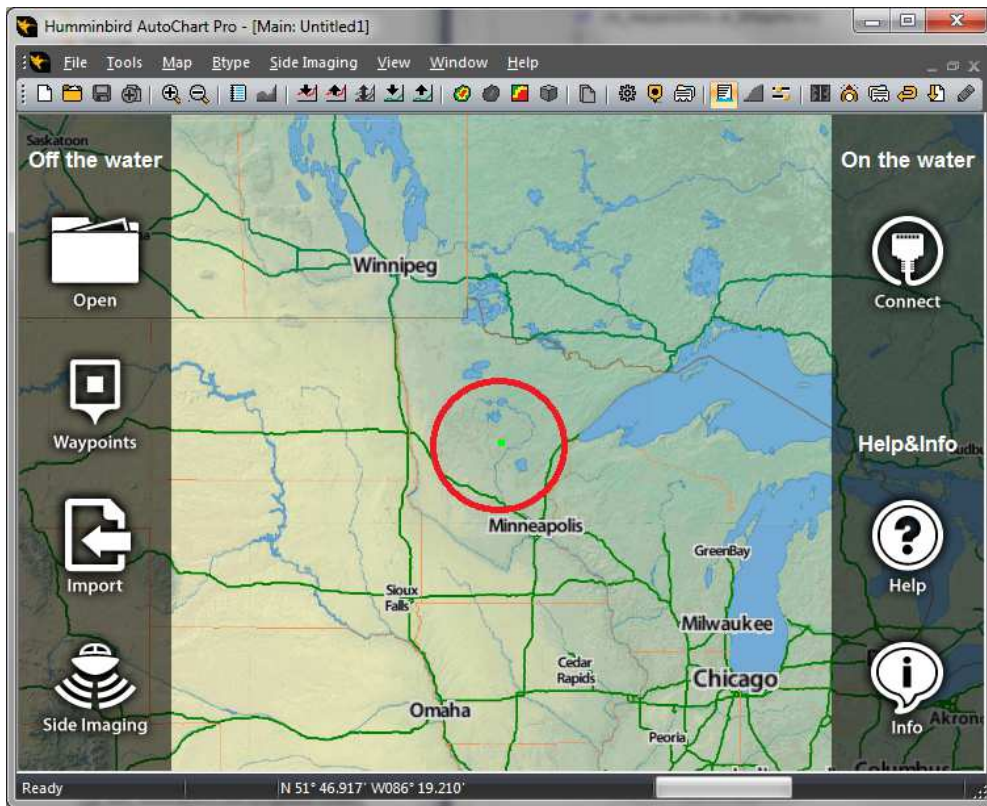
1. Make sure the file type selector in the lower right corner is set to **Humminbird tracks (*.ht)**.
2. Select the file *tut_trk1.ht* which you will find in the folder described above and hit **Open**.

When the import is done you will return to the start page. The following occurred when you imported the file:

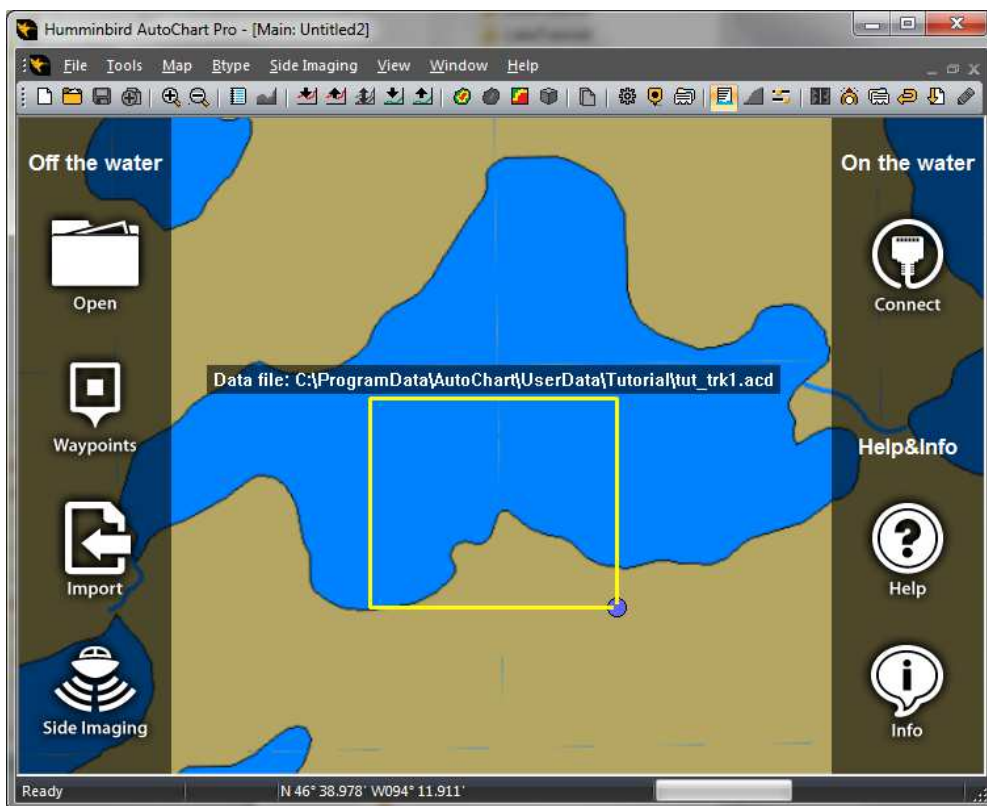
- The *tut_trk1.ht* file was converted to the file format used by AutoChart [.acd] and saved as *tut_trk1.acd*.
- Your new .acd file was added to the **Chart File Index**.

The **Chart File Index** is a list of all your data files. It is used to display file information on the start page and to load all data you have in a target area when you make a map.

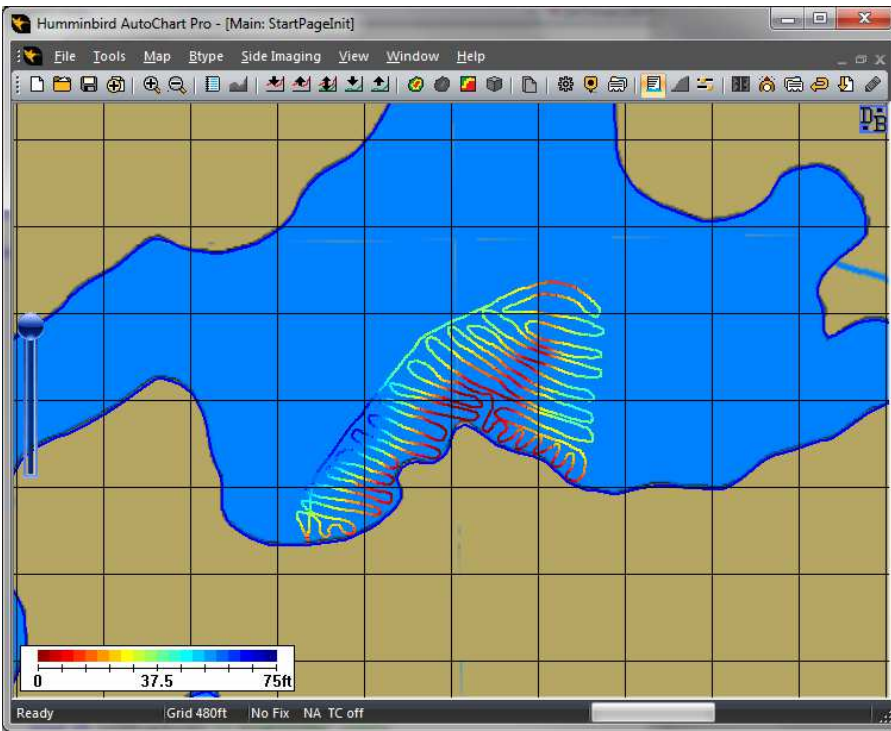
If you zoom in on the start page to have Minnesota in view, you will find that a green marker has now appeared:



If you zoom in closer you will find the bounding box of your new data file appears. Pointing at the blue handle in the lower right corner of the box will display file information:



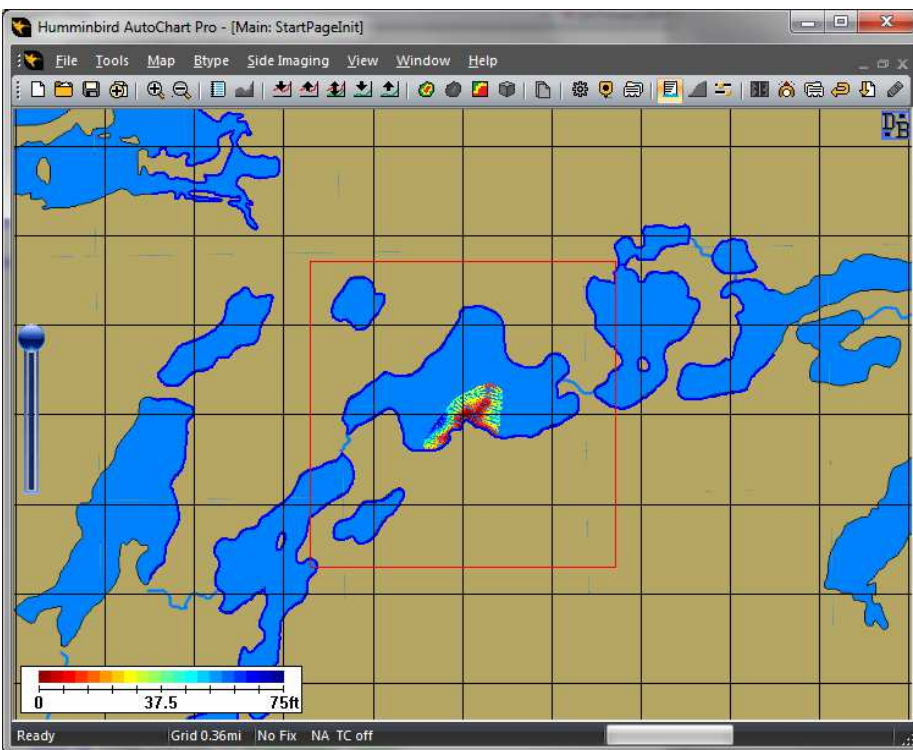
At this point you are not seeing any data, only an indication of what your file contains. To view the actual data, right click in the middle of the file bounding box and select **Map here**:



When you selected **Map here** the following occurred:

- AutoChart left the start screen mode and entered the mapping mode, where it is now ready to display your data and make a map.
- Your data was loaded using the **Chart File Index**. If you had more files in the area, those files would have been loaded as well.
- Shorelines were retrieved from the regional LakeMaster data.

If you zoom out a bit you will find a red box displayed:

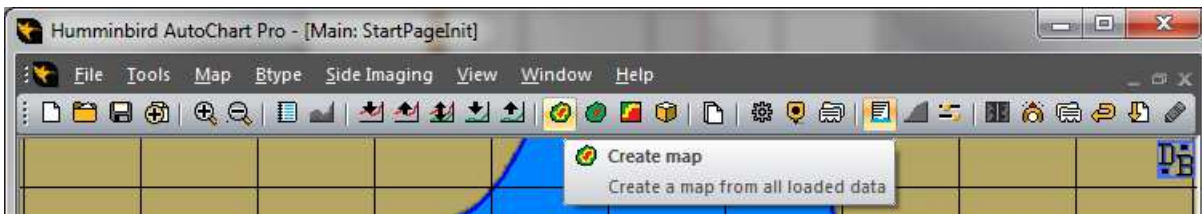


The red box is the area AutoChart will show depth data: the red box is your 'window' where you can see depth data and your own maps. You can think of the red box as a drawing canvas, which AutoChart uses to create maps.

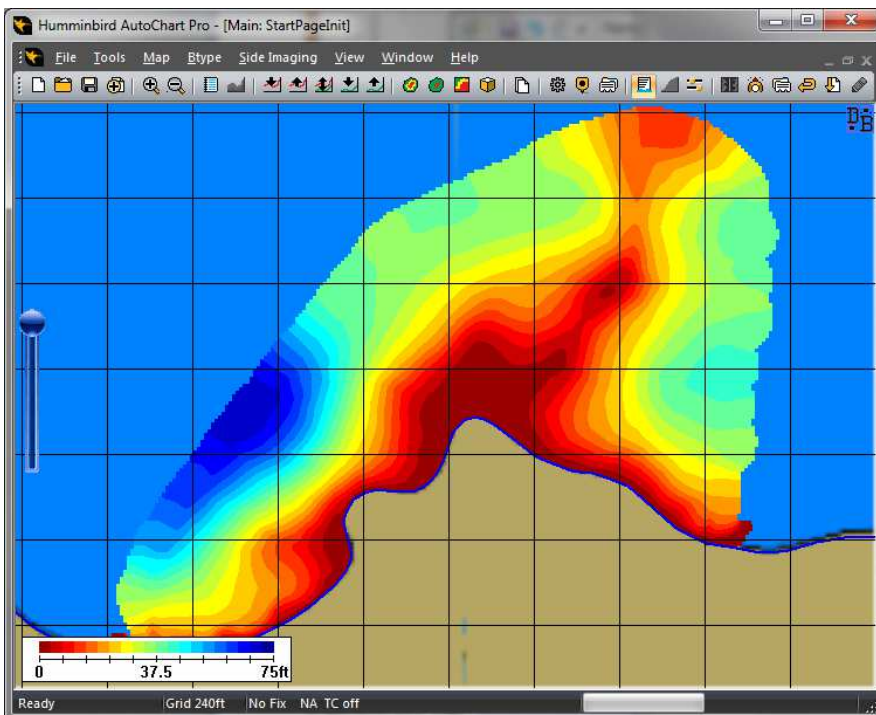
- The initial location of the red box is determined by where you right clicked on the start page to use **Map here**.
- You can easily move the location of the red box at any time:
 1. Pan the map so you have the location you want to be the new center at the center of the screen.
 2. Run **Map/Re-center** from the menu [or use keyboard shortcut **c**].
- You can change the size of the red box from the settings:
 1. Open the settings dialog with **Tools/Settings/General**.
 2. The setting **Internal map size** determines the size of the red box.
Note: bigger is not always better!

Step 2: Make your first map

With your file loaded, you are ready to make a map. All you need to do is to click the Create Map toolbar button:



You will now have your first depth map:

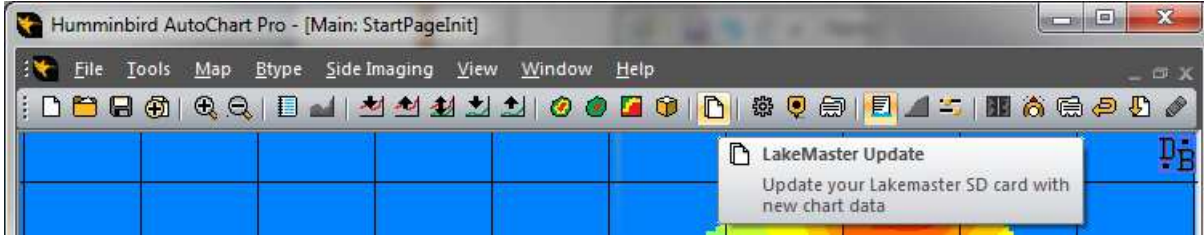


You can easily adjust the display/appearance of this map with settings you will find in **Tools/Settings/General** and also using the right click context menu.

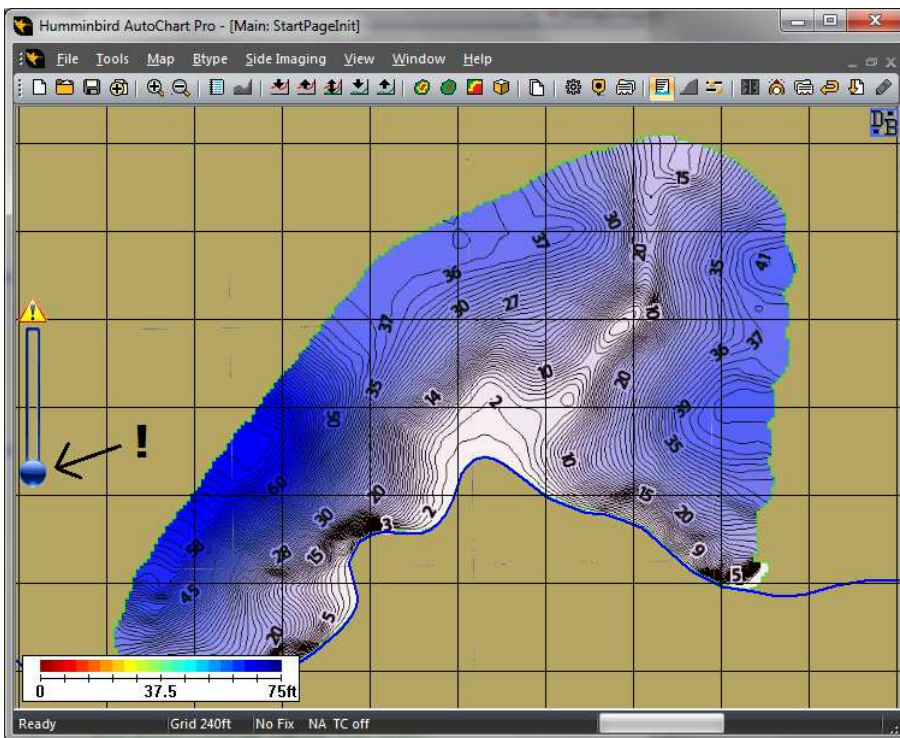
NOTE: Changes you make to the map display [colors, contours, contour spacing etc.] have no impact on the LakeMaster map you generate.

Step 3: Make your first LakeMaster map

With the map prepared it only takes one more mouse click to convert it to the LakeMaster format. Simply click the **LakeMaster Update** toolbar button:



After the conversion you will be asked if you want to change the display of the background map to your new custom LakeMaster map – click **OK**. To see the result, pull down the slider at the left side of the window to make the color depth map transparent:



What you now see is your custom LakeMaster map, exactly as it will display on your Humminbird unit. Zoom in/out to see how the map is displayed at various zoom levels. Your map is ready for use; there is nothing more you need to do before you can use it on your Humminbird unit.

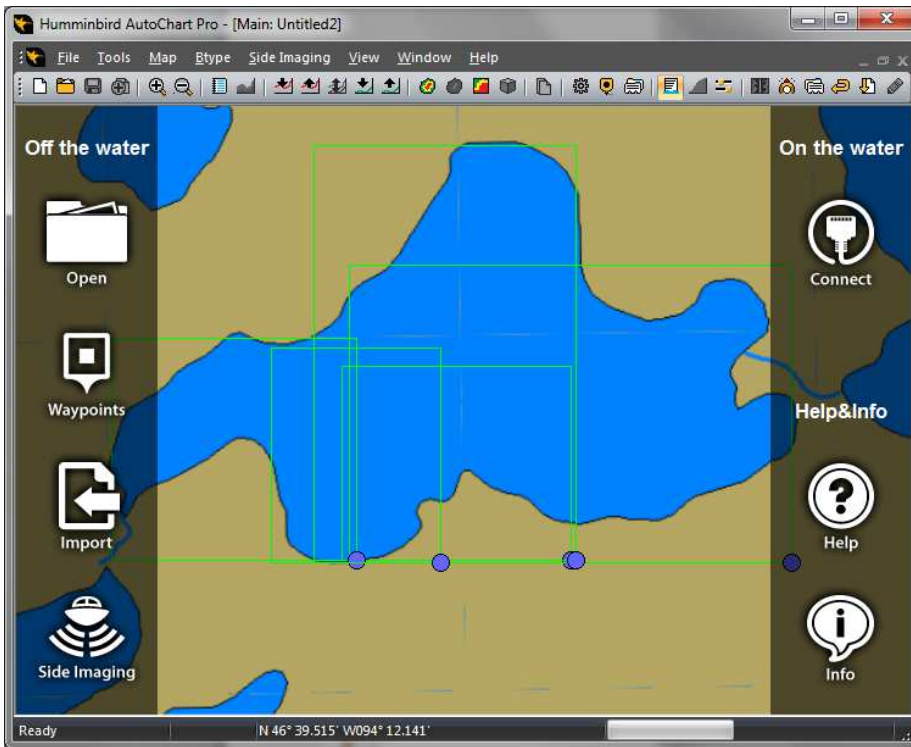
Step 4: Adding more data files to your lake and improving the map

As you collect more and more data, you will use the new files to improve you map to increase coverage and detail for every session.

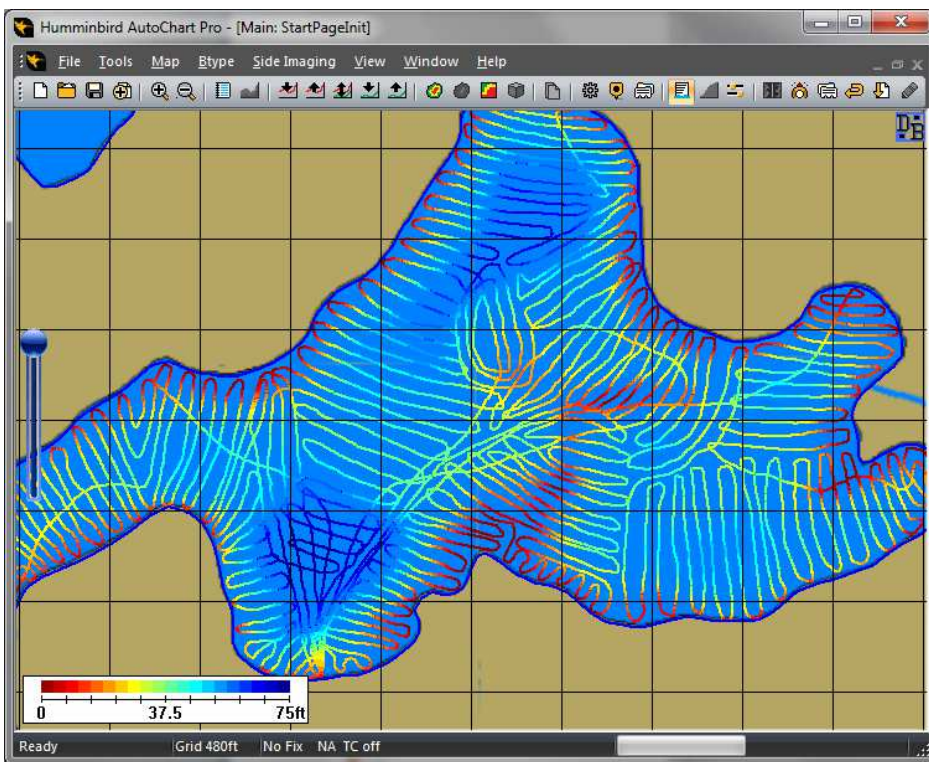
Now let's add the rest of the tutorial files to your map (if you wish you can add one file at a time to see how the map improves step by step):

1. Go back to the start screen by clicking the **New** toolbar button.
2. Click the **Import** icon.
3. In the import file dialog, select the remaining four *.ht* files: *tut_trk2.ht*, *tut_trk3.ht*, *tut_trk4.ht* and *tut_trk5.ht* (you can select several files of the same type at once).

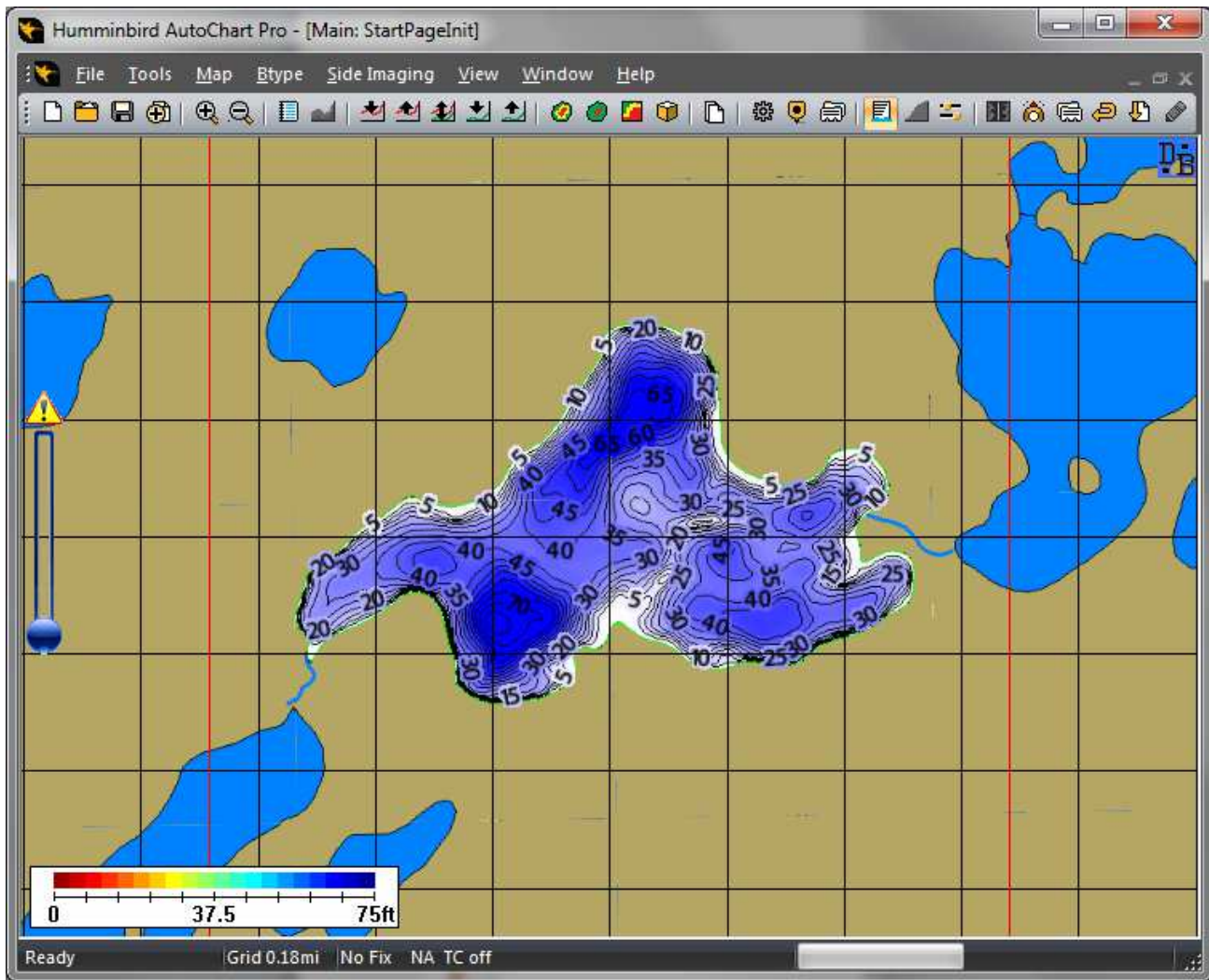
When the import is complete your new files are added to the **Chart File Index** and will display on the start screen:



To view all your data, right click in the middle of the lake and select **Map here** – all your data will load together with shore lines:



To make a map from all data, simply click the **Create Map** toolbar button. Then click the **LakeMaster Update** toolbar button to update your LakeMaster map, which will now be complete:



Step 5: Practical guidelines for the fisherman

If your main goal of using AutoChart is to improve your fishing, it is not a very good idea to start mapping a complete lake. It will take a lot of time to map areas you are not really interested in.

Instead, start mapping your fishing hot spots, and make sure you take a different route to/from them every time. You will then discover new interesting spots to map. Also you will get a feel for how you should drive the boat to get a good map, which in turn makes your data collection a lot more efficient.

Simply make sure to record data every trip. Then import the new log file to AutoChart to create an improved map ready for the next trip.

LIVE DATA

If you connect your Humminbird unit to your PC, AutoChart will create and display maps in real time. There are two ways to create a live data connection between a Humminbird unit and a PC running AutoChart: Ethernet and NMEA 0183.

With an Ethernet connection AutoChart will:

- Receive GPS and sonar data to make a depth map in real time

With an Ethernet connection, the AutoChart PRO version will also:

- Provide bottom hardness in real time.
- Display Side Imaging mosaic in real time [requires Ethernet enabled Side Imaging unit].
- Display 360 mosaic data in real time [requires Humminbird 360 Imaging system].

With a NMEA 0183 connection AutoChart will:

- Receive GPS and sonar data to make a depth map in real time

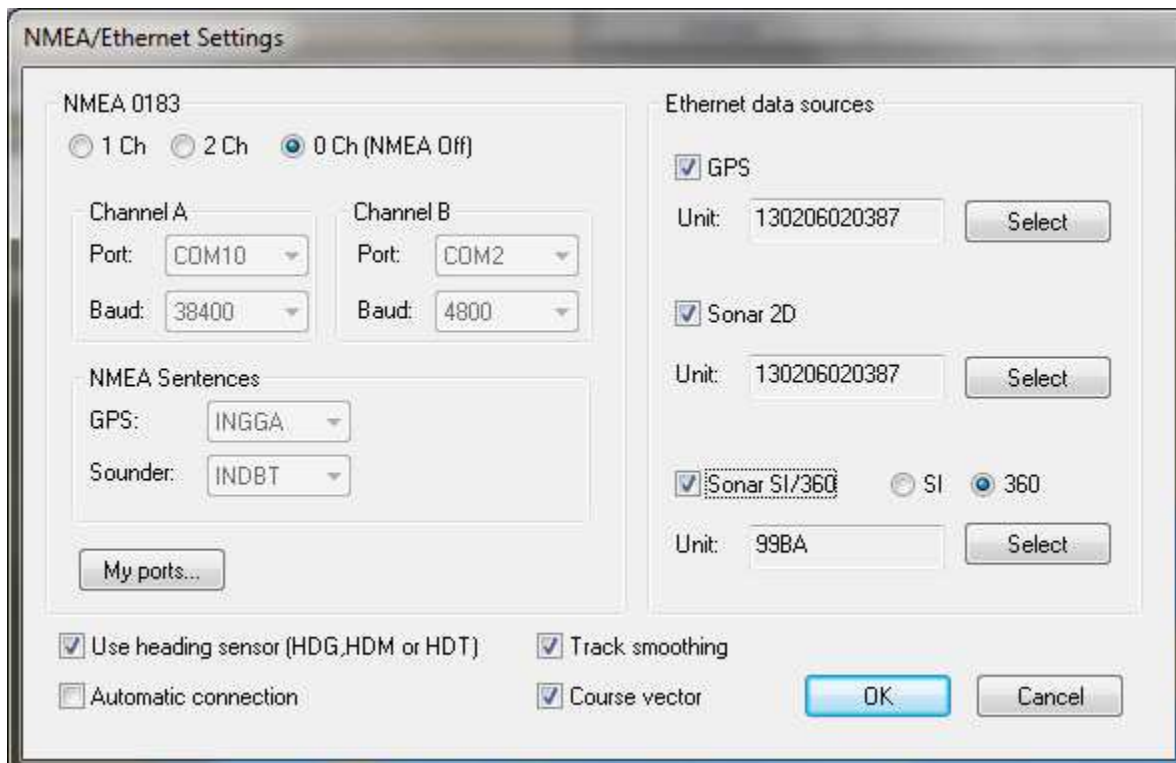
You can also use a combination of Ethernet and NMEA 0183 data to combine data from different units and/or protocols.

Ethernet Setup

With Ethernet you can either make a point to point connection to one unit, or if you have multiple units [and/or i-Pilot Link, 360 Imaging, etc.], connect through the **AS ETH 5PS** Ethernet switch.

You will need a cable with an RJ45 connector at one end, and an M12 connector at the other. The Humminbird part number for this cable is **AS EC CHART**. If you have a 700 series unit you will also need a converter cable from M12 to the accessory bus, part number **AS EC QDE**.

To setup AutoChart for live Ethernet use, open Tools/Settings/NMEA/COM/Ethernet:



- Make sure NMEA 0183 is set to **0Ch (NMEA off)**.

- Check **GPS** and **Sonar 2D** in **Ethernet data sources**.
- If you are running AutoChart PRO and have a Side Imaging or a 360 Imaging system, check **Sonar SI/360** and select **SI** or **360**.

Select the unit to source data from:

- With the settings dialog still open, make sure that you have all of the units running (including an Ethernet switch if applicable).
- Then click the **Select** button for the sources you want to use. You will be provided with a list of units to use. Select the one(s) to use.

Click **OK** when all settings are made.

Firewall: Your Windows Firewall must be enabled for Ethernet data between your Humminbird unit and AutoChart. If you are using the standard Windows Firewall:

1. In Windows, go to Control Panel/Windows Firewall/Exceptions.
2. Use the 'Add program' button to provide AutoChart Ethernet access.

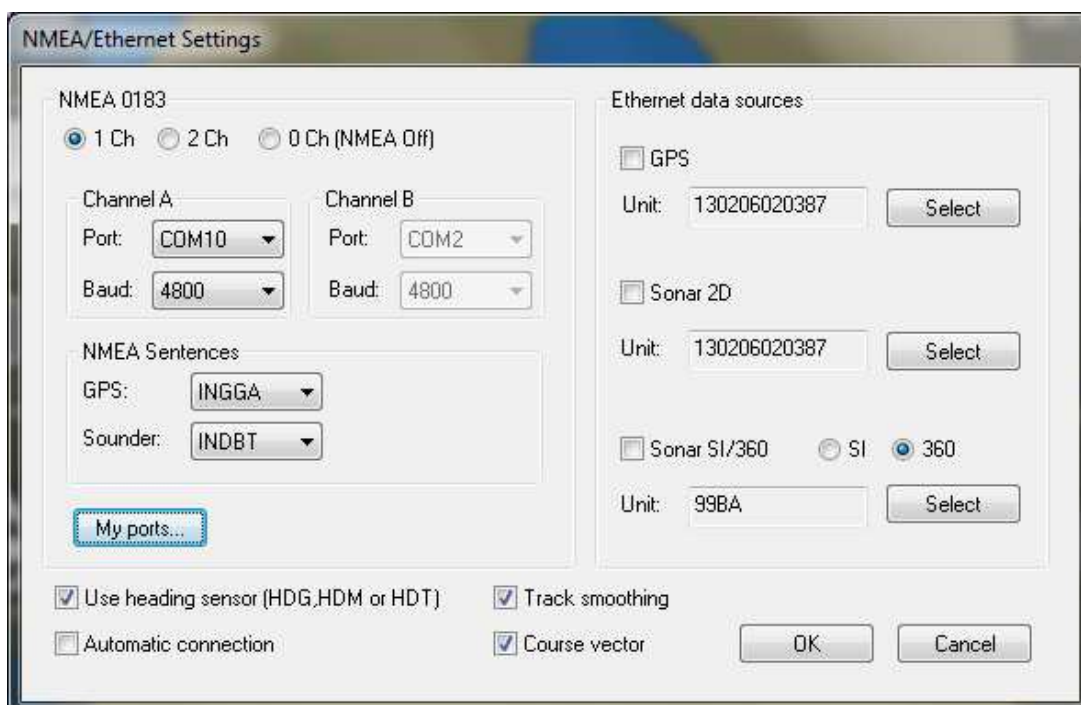
With everything setup, simply click the **Connect** icon on the start screen to connect to live data and start live mapping and/or mosaicking.

NMEA 0183 Setup

To receive NMEA 0183 data on your PC you will need a serial port. If your PC does not have one you will need a USB to serial converter:

- On units with internal GPS, the best option is **AS PC3**: the included cable connects directly from the unit to USB.
- On units with external GPS you can use either **AS PC3**, or **AS USB + AS PC2**. The NMEA out wires on units with external GPS can be found in the 'pigtail' which is the short cable stump attached to the connector at the end of the GPS cable. Remove the rubber cover from the cable end: white = NMEA out, black = Ground.

To setup AutoChart for live NMEA 0183 data, open **Tools/Settings/NMEA/COM/Ethernet**:



- If you will be receiving both position and depth data from the same unit, set the channel setting to **1 Ch**.

- Select **Port** and **Baud** rate settings:
 - To find which COM port number to use, make sure that you USB to serial converter is plugged in to your PC, and then click the **My ports...** button. You will get a list of available ports [if you are unsure which port is your USB converter, click **My ports...** again with the converter unplugged].
 - If you have the **AS GPS HS** external GPS with heading sensor, set the **Baud** rate setting to 38400, otherwise set to 4800.

If you want to receive NMEA data from two different units [GPS from one, depth from another], set the channel setting to **2 Ch** and make sure that the unit providing GPS data is connected to **Channel A**. You will need to apply **Port** and **Baud** settings for both channels.

Settings on your Humminbird unit:

- Make sure your unit is set to advanced mode: **Setup->User Mode->Advanced**.
- Turn on NMEA output: **Setup->NMEA 0183 Output->On**.

With everything setup, simply click the **Connect** icon on the start screen to connect to live data and start live mapping.

Settings in AutoChart using live data

Most of the settings that are on by default, are also applicable for live data. There are some small adjustments that will make life simpler on the water:

- Turn on **AutoSave**. Go to **File/AutoSave** and tick '**Auto Save**' **On**. Select a default filename for all files [this base filename will be appended with a time tag as well], and directory to store the files in.
- Go to **Tools/Settings/General**. In the **Map generation** group box there is a setting named **Automation**. By turning on one of the Auto modes, AutoChart will update the mapping area [the red box] as you go and update data content as needed.
- **Water level correction**. There are several options to correct for varying water levels, both fixed as well as tide variations. Please see the main help file or the Tips and tricks section in this document.
- Do you find it difficult to control a PC/laptop with wet slimy hands? Get a **Gamepad**! It is easy to water protect by just putting it in a plastic bag, and is easily replaced should breaking waves take its toll. Turn on support for a gamepad in **Tools/Settings/General**. You will find details on functionality in the main help file. The mouse functions provided by the gamepad are also useable in other applications, as long as AutoChart is running.


Live data uses a **Chart File Index** in the same way as with offline data. You will have access to all your previous data files also when running live data. A **Chart File Index** is already setup by default.

TIPS AND TRICKS

Background Maps

The LakeMaster worldwide base map, and the map that comes on the AutoChart ZeroLine SD, display as a background map in AutoChart, underneath your own collected data and the custom maps you make from it. These LakeMaster maps are not the only options you can use as a background map. You have a range of other map options to choose from in **Tools/Settings/Background Map**. For example, there is a range of online map sources, and you can also make your own custom background map from almost any image. Please see the main help file for all details on background map options.

When you have data loaded in AutoChart, and are no longer on the start screen, you can turn the display of the background map on/off using either the **Map/Objects/Background Map** menu item, or by using the right mouse click context menu.

 **NOTE:** If the selected background map option is LakeMaster, the display of the background map will automatically be turned on when loading data. For other background map sources, you will need to manually turn the display on using the **Map/Objects/Background Map** menu item, or using the right mouse click context menu.

Editing data

Sometimes you will get errors in your data. Your sounder may give false readings that are caused by turbulence, fish schools and such. You can also get jumps in GPS data if reception was bad. When opening a single file it may be difficult to tell if a data point is corrupt or not, but when you display all your data together it can be quite obvious that some points are wrong.

AutoChart has functions to correct such anomalies in seconds. When you detect a suspicious data point you can easily trace it. First make sure to display 'raw' 2D data, not a map. If you have a map displayed, right click your mouse and remove the check mark from the **Map** entry in the pop up menu. Then zoom in to the suspicious point, right click and select **Trace Data** [you can also hold down the Shift key and double click the point]. A dialog will pop up that tells you what file the point comes from, and gives you options to delete the point directly, open the file for editing, or cancel.

If you select to open the file it will open in an **Edit tab**. Do your edits, save the file and then close the edit tab. When you get back to the **Main tab**, where all your data is displayed, use **File/Reload Active Chart File Index** to refresh all data and take all edits into account.

Waypoints

Waypoints are central in AutoChart:

- You can use AutoChart to manage all your waypoints for your Humminbird units
- You can import and export subsets of waypoints using area delimiting filters.
- You can import waypoints from several data formats.
- You can use waypoints to initiate or change your mapping location.

Water level and tide compensation

If you map waters with a varying water level you can easily compensate your data and create maps for various levels:

- Make sure all your data files are referenced to the same nominal water level. Take a note on what the water level was during the day.
- When you import data, water level corrections can be applied directly. Open **File/Import Settings** and check **Ask for tide correction when importing data**. You will now be prompted for a correction every time you import a file.

Level correction can be applied for both a fixed level change as well as for a time-varying tide. You will find all details on water level corrections in the main help file.

Creating contour lines or marking features with tracks

If you use Navionics charts for navigation you can display your custom depth data on top of the Navionics chart using track file data.

Use **Tools/Create Contour Lines** to export contours in Humminbird .ht track format. When generating the contours you can also auto generate a file [Humminbird .HWR format] with waypoints to be used as depth labels.

Once you have generated the .ht file[s] with optional waypoint file [.HWR]:

1. Place the files on a memory card in a folder named 'MATRIX'.
2. Put the card in the unit after it has been turned on, you will be prompted to load the data.
3. On the unit, go to **Menu->Menu->Nav->Saved Tracks->Edit** to change the track style for your track[s]. For the contour line track, the best option is to choose **Color By Depth** - you will then get your contour lines color coded. For the shoreline track you can use any style you like.

If you do not need the full set of contour lines, you can mark a single feature such as a wreck's footprint, or a drop off line, to export to a track file:

- Hold down the right Ctrl key and double click the contour you want. The contour will now be highlighted. To export it to a track file, use **Tools/Convert Selected Contour**.

You can easily trim parts of the map before you export data:

- To make an arbitrary cutout, use **Tools/Clear Area**. If you hold down the Shift key when using **Tools/Clear Area** the area outside the marked area will be cleared. If you hold down the Ctrl key you can use a file as area delimiter.
- To make a 'square' cutout you can use a number of re-centering operations. To make this easy, first make sure that **3D Resolution** is set to 5m. When you then drag a 2D map you will see a green box that is the same size as the box. The green box shows what part of the map will be rendered in 3D, but you can also use it to see what part of the map that will be left after you make a re-centering operation with **Map/Re-center**. So first, pan the map to set the first corner and use **Map/Re-center**. Then drag the map to set the opposite corner and make another **Map/Re-center**.

When you trim away parts of the map raw data may become visible around the part of the map that is still left but this does not affect exported map data.

Create tracks for i-Pilot Link

You can easily create a track for use with i-Pilot Link.

- To create an i-Pilot Link track from a contour: Hold down the right Ctrl key and double click the contour you want. The contour will now be highlighted. To export it to a track file, use **Tools/Convert Selected Contour**, and save in 'i-Pilot Link HIT track [* .hit]' format.
- To make an arbitrary shaped track, first create a line with **Tools/Draw Line** - select **Marker line/Polyline** as data type when saving the file. Your line will be saved in AutoChart .acd format. Then convert your .acd file to a .hit file using **Tools/Convert Line to Track**.

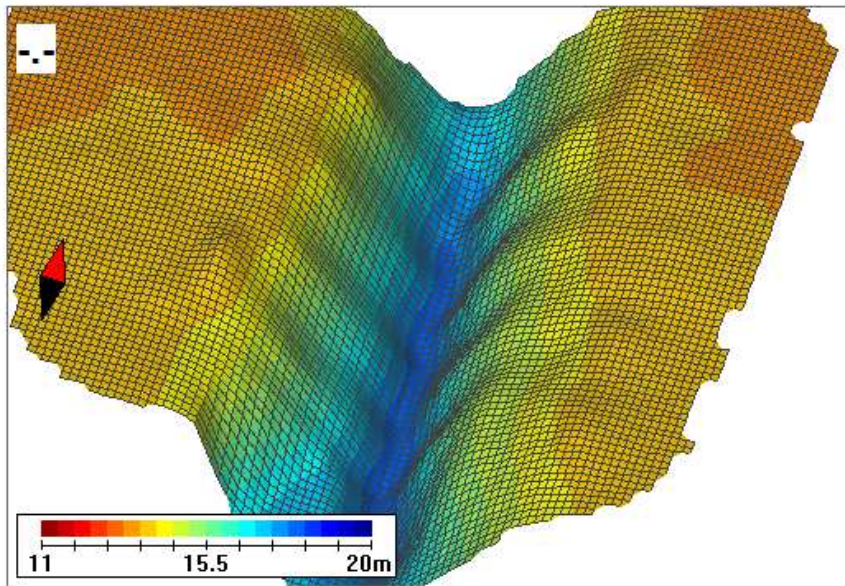
To load your line to your Humminbird unit:

1. Place the .hit file on a memory card in a folder named 'MATRIX'.
2. Put the card in the unit after it has been turned on, you will be prompted to load the data.

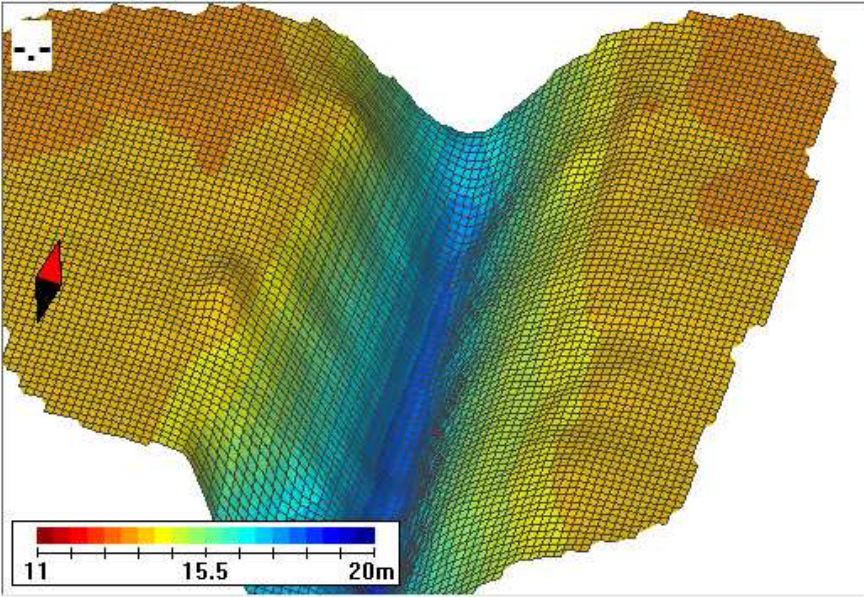
X/Y/Tilt/Latency

AutoChart has settings to compensate for how the GPS antenna and the transducer are placed in relation to each other, plus compensation for timing. These settings can be applied when you import data. It is a good thing to sort these settings out early in your mapping career if you want the best possible data. The AutoChart main help file describes what these parameters are and how you can tune those using live NMEA data. You can also tune them using a log file if you make a simple test:

1. Make a test run with your boat where you go up and down a steep slope, cross a ridge, or similar. Each pass should be about 3-5m apart, and it is good if the depth varies from about 0-20m. The important thing is to go in the 'fall line'. Imagine you already had a contour map - you would then go across the contours.
2. Now set the **X** and **Y** values in **Tools/Settings/General** [use a tape measure]. Set both **Tilt** and **Latency** to 0. Make sure **Use X/Y/T** is checked. Import your log file from Step 1. When prompted for, press **Yes** to apply X/Y/T/Latency corrections. Open the imported file with **File/Open** and create the map. The map may look like below, where a trench has been crossed several times. You see that the steep sections are a bit 'wavy' - this is caused by the Latency not being perfectly adjusted. You can see this in both 2D and 3D.



3. Now change the **Latency** value in **Tools/Settings/General** and import the data again. Test several Latency values [in steps of about 100-200ms] until you have found a value that removes the waviness.



To get a value for Tilt you can repeat the process [with the value for Latency found above], but with a measurement from considerably deeper water (>40m). If you are not going to map details in deep water [such as ship wrecks] you do not need to worry about Tilt - just set it to zero.

CONTACT HUMMINBIRD

Contact Humminbird Customer Service in any of the following ways:

Web site:

humminbird.com

E-mail:

service@humminbird.com

Telephone:

1-800-633-1468

Direct Shipping:

Humminbird
Service Department
678 Humminbird Lane
Eufaula, AL 36027 USA

Hours of Operation:

Monday - Friday

8:00 a.m. to 4:30 p.m. [Central Standard Time]

Social Media Resources:



[Facebook.com/HumminbirdElectronics](https://www.facebook.com/HumminbirdElectronics)



[Twitter.com \[@humminbirdfish\]](https://twitter.com/@humminbirdfish)



[YouTube.com/humminbirdtv](https://www.youtube.com/humminbirdtv)

