

# LAKEMASTER<sup>®</sup>

## QUICK START GUIDE

531803-5\_C

## INTRODUCTION


Humminbird<sup>®</sup> LakeMaster<sup>®</sup> map cards are compatible with Humminbird control heads with chartplotting capabilities. To review the latest compatibility information and to download a detailed LakeMaster Map Card user guide, visit our Web site at [humminbird.com](http://humminbird.com).

Locate the instructions that apply to your Humminbird control head(s), as follows:

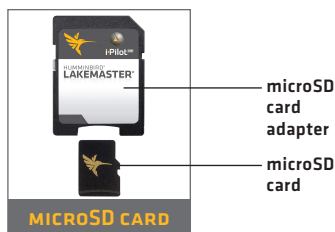
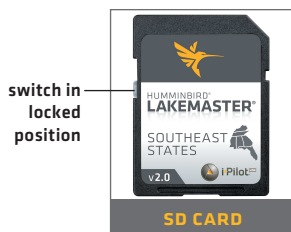
- APEX<sup>™</sup> Series
- SOLIX<sup>®</sup> Series
- HELIX<sup>®</sup> Series

### ➤ HUMMINBIRD LAKEMASTER MAP CARDS

Your control head is compatible with either an SD card or a microSD card. It is important to note the following guidelines:

 **WARNING!** Do NOT delete or change the contents of your map card. Changing the card will permanently damage it.

- Confirm the map card is locked [see the illustrations below].
- Do not force the card into the slot. The card should click easily into place.
- **Do not leave the card slot cover open.** Close the slot cover to prevent water damage to the unit.



# GETTING STARTED

---

## ➤ POWER ON

1. Press the POWER key.
2. **On the water with GPS reception:** select Normal mode.  
**Off the water without GPS reception:** select Simulator mode.

## ➤ CHECK THE CURRENT SOFTWARE VERSION

It is important to install the latest software update to enable the Humminbird LakeMaster map card on your control head.

**LakeMaster PLUS** requires the following software versions:

**APEX:** 3.890 and later

**SOLIX:** 3.000 and later

**HELIX:** 1.150 and later

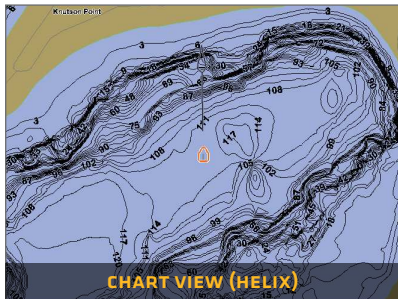
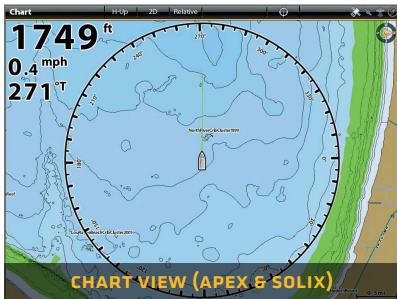
## ➤ OPEN CHART VIEW

**APEX and SOLIX:**

1. Press the HOME key.
2. Select Chart View from the Favorites bar.

**HELIX:**

1. Press the VIEW key until Chart View is displayed on-screen.



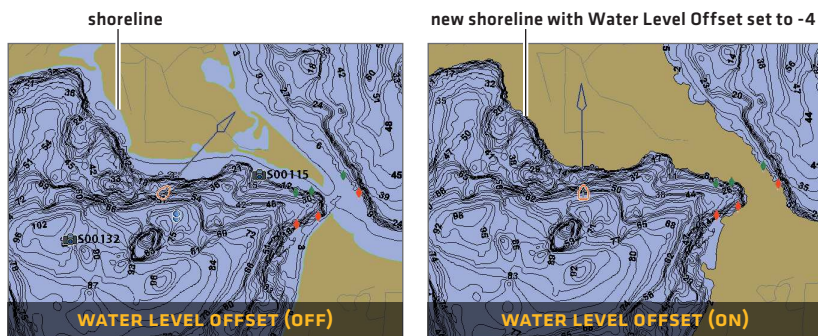
## ➤ SET THE WATER LEVEL OFFSET

It is important to note if the water level is higher or lower than normal for the selected lake. For example, if the water level is down 3 feet, set the Water Level Offset to -3. Depth labels on the Contour Lines will adjust based on the Water Level Offset setting.

- If the water level is higher than normal, set a positive amount.
- If the water level is lower than normal, set a negative amount.
- If the water level has not changed (**normal**): For APEX and SOLIX, turn Water Level Offset off. For HELIX, set the Water Level Offset to 0.

**APEX and SOLIX:** Chart X-Press Menu > Water Level Offset

**HELIX:** Main Menu > HB Chart Menu tab > Water Level Offset



## ➤ SET DEPTH HIGHLIGHTS

Highlight deep and shallow waters in Chart View and Chart Combo Views using the following LakeMaster features:

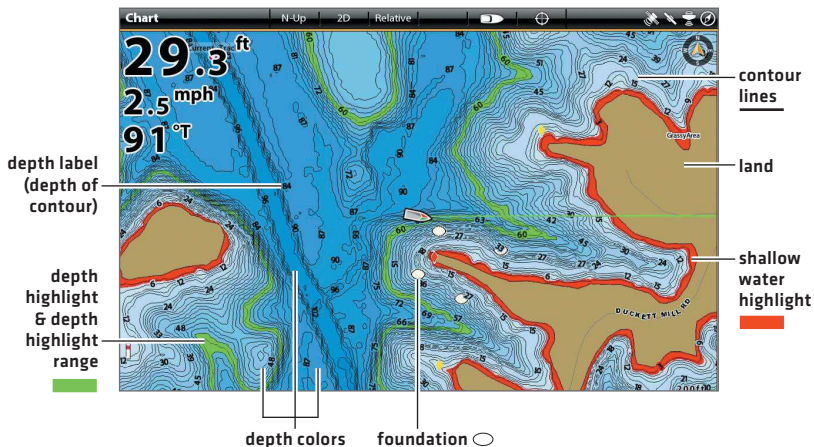
- **Depth Colors** applies shading to various depths.
- **Depth Highlight** and **Depth Highlight Range** allow you to select a depth range to be highlighted in green on the chart.
- **Shallow Water Highlight** identifies shallow waters in red when the depth is equal to or less than the amount you set.

**APEX and SOLIX:** Chart X-Press Menu > Chart Options > Humminbird Settings

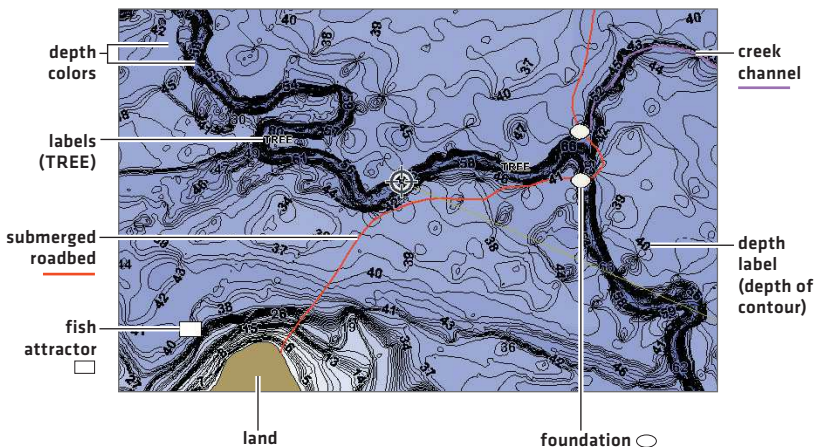
**HELIX:** Main Menu > HB Chart Menu tab

# LAKEMASTER IN CHART VIEW

## ➤ APEX AND SOLIX



## ➤ HELIX



# TIPS FOR USING THE MAP

---

## ➤ MOVE ACROSS THE CHART

### **APEX and SOLIX**



Move the joystick.

### **HELIX**



Press any arrow on the 4-Way Cursor Control key.

## ➤ SEE MORE ON THE CHART



Zoom in [+] and Zoom out [-] to see more of the chart display [contour lines, depth colors, etc.].

## ➤ VIEW MAP INFORMATION



Move the cursor to an icon [buoy, marker, etc.], contour line, or position on the chart, and press the CHECK/INFO key.

## ➤ DISPLAY OR HIDE CONTOUR LINES

Hide Contour Lines to see more details on the chart.

**APEX and SOLIX:** Chart X-Press Menu > Chart Options > Humminbird Settings > Contour Intervals

**HELIX:** Main Menu > Chart Menu tab > Contour Lines

## ➤ CHANGE THE CHART ORIENTATION

Select your display preference: North-Up, Head-Up, Course-Up, etc.

**APEX and SOLIX:** Chart X-Press Menu > Chart Options > Preferences > Orientation

**HELIX:** Main Menu > Chart Menu tab > Chart Orientation

## ➤ DISPLAY A LAKE USING LAKE LIST

The displayed lake map is based on the current latitude/longitude position and the map card installed in the control head. GPS reception is required for the correct lake to be displayed. To display a different lake map from the installed map card, use Lake List.

**APEX and SOLIX:** Navigation X-Press Menu > Info > Lake List

**HELIX:** Main Menu > HB Chart Menu tab > Lake List

# ADVANCED LAKEMASTER FEATURES

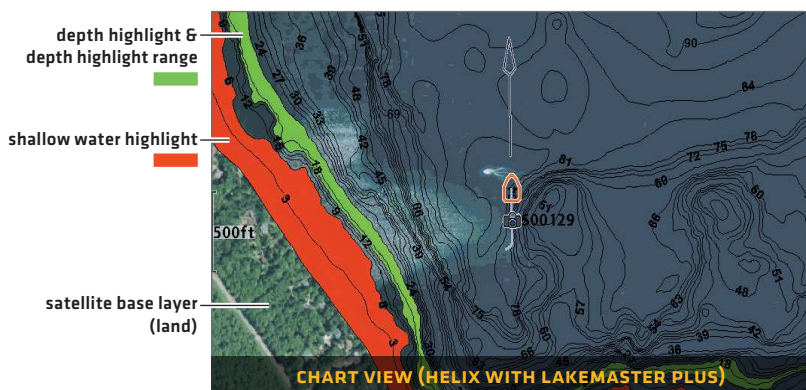
## ➤ **LAKEMASTER PLUS: DISPLAY AERIAL IMAGERY**

If you have a LakeMaster PLUS map card, add a base layer that shows aerial imagery on the Chart View and Chart Combo Views.

Download a detailed LakeMaster Map Card user guide from our Web site at [humminbird.com](http://humminbird.com).

**APEX and SOLIX:** Chart X-Press Menu > Chart Options > Humminbird Settings > Base Layer

**HELIX:** Main Menu > HB Chart Menu tab > Base Layer



## ➤ **SMARTSTRIKE®: ACCESS THE SMARTSTRIKE MENU**

For more information, download the SmartStrike Accessory Manual from our Web site at [humminbird.com](http://humminbird.com).

**APEX and SOLIX:** Navigation X-Press Menu > Info > SmartStrike

**HELIX:** Press the CHECK/INFO key > SmartStrike.

## ➤ **AUTOCHART® ZERO LINES**

Download the AutoChart ZeroLines Accessory Manual from our Web site at [humminbird.com](http://humminbird.com).

# TROUBLESHOOTING

---

## ➤ **The map is not displayed in Chart View.**

1. Confirm GPS reception.
2. Confirm the Chart Source setting:  
**APEX and SOLIX:** Home > Settings > Chart  
**HELIX:** Main Menu > Chart Menu tab > Map Source
3. Confirm the lake name is in the LakeMaster library.
4. Confirm the control head software is up to date.
5. Confirm compatibility on our Web site at **humminbird.com**.

## ➤ **How can I view maps on my control head when I am not on the water?**

1. Power on the control head. Select Simulator.
2. Select a lake from Lake List.

## ➤ **Can I view the Humminbird LakeMaster map card on my computer?**

No, the Humminbird LakeMaster map card is not compatible with your computer. It is only compatible with your Humminbird control head. Installing the Humminbird LakeMaster map card in a computer could corrupt the map files.

## ➤ **The map displays, but seems to redraw slowly as you move across the water.**

1. Press the ZOOM [-] key to zoom out of the Chart View.
2. Confirm the control head software is up to date.

## ➤ **For additional questions,** see the FAQ page at **humminbird.com** or contact Humminbird Technical Support through our Help Center at <https://humminbird-help.johnsonoutdoors.com/hc/en-us>.

# WARRANTY

---

## ➤ END USER LICENSE AGREEMENT

This Hydrographic Database is the proprietary and confidential property of Johnson Outdoors Marine Electronics. Unauthorized use, including the copying of this Hydrographic Database, is expressly prohibited. BY USING THE PRODUCT YOU ARE AGREEING TO BE BOUND BY ALL THE TERMS AND CONDITIONS OF THE JOHNSON OUTDOORS [“LICENSOR”] LICENSE AGREEMENT [“AGREEMENT”] WHICH IS PROVIDED WITH THIS LAKEMASTER DIGITAL MAP PRODUCT [“LICENSED PRODUCT”] INCLUDING, WITHOUT LIMITATION, THE USE RESTRICTIONS, WARRANTY DISCLAIMER AND LIMITATIONS OF LIABILITY SET FORTH HEREIN. Under the Agreement, you have a limited, non-exclusive, personal license to use the data contained on the media in this package, on a GPS mapping device for supplemental navigation reference purposes. Licensor and its third-party suppliers retain all rights to the Licensed Product not expressly granted by the Agreement. You are responsible for using official government charts and prudent navigation for safe travel. The Licensed Product and the accompanying documentation are copyrighted works of authorship and contain valuable secret and confidential information proprietary to Licensor and its third-party suppliers who retain the ownership of the information and all copyrights and other proprietary rights therein. You agree to exercise reasonable efforts to protect their proprietary interests. You may NOT modify, adapt, translate, reverse engineer, decompile, disassemble, sub license, rent, lease, or sell any portion of the Data. You may NOT create derivative works based upon the Data. You may NOT place the Data onto a server so that it is accessible via a public network such as the Internet.

LICENSOR AND ITS THIRD-PARTY SUPPLIERS DO NOT WARRANT THE LICENSED PRODUCT WILL MEET YOUR REQUIREMENTS OR THAT ITS OPERATION WILL BE UNINTERRUPTED OR ERROR-FREE. IN NO EVENT WILL LAKEMASTER OR ITS SUPPLIERS BE LIABLE TO YOU FOR ANY CONSEQUENTIAL OR INCIDENTAL DAMAGES. Some states or jurisdictions do not allow the exclusion or limitation of consequential or incidental damages, so the above limitations may not apply to you.



## ➤ PRODUCT WARRANTY & RETURN POLICY

Johnson Outdoors warrants this product against defects in material and workmanship for 30 days from the date of purchase. Defects in materials or workmanship that occur within 30 days of purchase, substantiated by a sales receipt, will either be repaired or replaced without charge at Johnson Outdoors' discretion. THIS REPAIR OR REPLACEMENT IS THE EXCLUSIVE REMEDY AVAILABLE FOR ANY DEFECT CONCERNING THE PRODUCT OR FOR ANY LOSS OR DAMAGE RESULTING FROM ANY OTHER CAUSE WHATSOEVER. JOHNSON OUTDOORS WILL NOT UNDER ANY CIRCUMSTANCES BE LIABLE TO ANYONE FOR ANY SPECIAL, CONSEQUENTIAL, INCIDENTAL OR OTHER INDIRECT DAMAGES OF ANY KIND.

This warranty does not apply when: 1. the product has been altered, adjusted or handled in a manner other than in accordance with the instructions furnished with this product: 2. any defect, problem, loss or damage has resulted from any misuse negligence or carelessness.

## ➤ RETURN OF DEFECTIVE PRODUCT

Do not return this product to any retailer. You must return this product directly to Johnson Outdoors. Returned products must have a Return Authorization [RA] number clearly displayed on the outside of the shipping package. Contact Humminbird Technical Support through our Help Center at <https://humminbird-help.johnsonoutdoors.com/hc/en-us> within 30 days of purchase to obtain the RA. When you return the product, include a valid sales receipt, product UPC, a return address and phone or email contact information. The RA is valid for 30 days from date issued. Product should be returned to: **Humminbird Service Department, 678 Humminbird Lane, Eufaula, AL 36027 USA**

Johnson Outdoors reserves the right to examine the product when we receive it to determine if the defect or malfunction is due to a defect in materials or workmanship. Johnson Outdoors will duplicate the original data on all repaired or replaced products. Products that are defective due to any other cause will not be repaired or replaced. Damaged products, not covered by or that are out of warranty may be eligible for repair for a service fee, contact Johnson Outdoors for more information. **WARNING: Never format a LakeMaster SD card. Formatting the card will permanently erase the map data. Never use a LakeMaster SD card to store or transfer data as this may damage the card.**

# WARNINGS

---



**WARNING!** The electronic chart in your Humminbird unit is an aid to navigation designed to facilitate the use of authorized government charts, not to replace them. Only official government charts and notices to mariners contain all of the current information needed for the safety of navigation, and the captain is responsible for their prudent use.



**WARNING!** Do NOT save data files (waypoints, routes, tracks, groups, recordings, etc.) to your map card. Saving data to your map card will permanently damage it. You can save navigation data to the control head and export it to a blank card. Download the LakeMaster Map Cards Accessory Guide from our Web site at **humminbird.com** for more details.



**WARNING!** Do NOT delete or change the contents of your map card. Changing the card will permanently damage it.



**NOTE:** To purchase accessories for your control head, visit our Web site at **humminbird.com** or contact Humminbird Technical Support through our Help Center at <https://humminbird-help.johnsonoutdoors.com/hc/en-us>.

APEX™, AUTOCHART®, HELIX®, Humminbird®, LakeMaster®, SmartStrike® and SOLIX® are trademarked by or registered trademarks of Johnson Outdoors Marine Electronics, Inc.

Adobe, Acrobat, Adobe PDF, and Reader are either registered trademarks or trademarks of Adobe Systems Incorporated in the United States and/or other countries.

microSD is a trademark or registered trademark of SD-3C, LLC in the United States, other countries or both.

# NOTES

---

# CONTACT HUMMINBIRD

---

Contact Humminbird Technical Support through our Help Center at <https://humminbird-help.johnsonoutdoors.com/hc/en-us> or by writing to the address below:

**Humminbird Service Department**  
678 Humminbird Lane  
Eufaula AL 36027 USA

## Social Media Resources:



Facebook.com/HumminbirdElectronics



Twitter.com [@humminbirdfish]



Instagram.com/humminbirdfishing



YouTube.com/humminbirdtv

