

MEGA LIVE 2 IMAGING

Operations Guide

532771-3EN_A



SIMPLY. CLEARLY. BETTER.

THANK YOU!

Thank you for choosing Humminbird®, the #1 name in marine electronics. Humminbird has built its reputation by designing and manufacturing top quality, thoroughly reliable marine equipment. Your Humminbird is designed for trouble-free use in even the harshest marine environment. In the unlikely event that your Humminbird does require repairs, we offer an exclusive Service Policy. For complete details, see the separate warranty card included with your unit. We encourage you to read this operations manual carefully in order to get the full benefit from all the features and applications of your Humminbird product.

Contact Humminbird Technical Support through our Help Center at <https://humminbird-help.johnsonoutdoors.com/hc/en-us>.

CAUTION

This device should not be used as a navigational aid to prevent collision, grounding, boat damage, or personal injury. When the boat is moving, water depth may change too quickly to allow time for you to react. Always operate the boat at very slow speeds if you suspect shallow water or submerged objects.

The electronic chart in your Humminbird unit is an aid to navigation designed to facilitate the use of authorized government charts, not to replace them. Only official government charts and notices to mariners contain all of the current information needed for the safety of navigation, and the captain is responsible for their prudent use.

Humminbird is not responsible for the loss of data files [waypoints, routes, tracks, groups, recordings, etc.] that may occur due to direct or indirect damage to the unit's hardware or software. It is important to back up your control head's data files periodically. Data files should also be saved to your computer before restoring the control head defaults or updating the software. Visit our Web site at humminbird.johnsonoutdoors.com and download your control head operations manual for details.

Disassembly and repair of this electronic unit should only be performed by authorized service personnel. Any modification of the serial number or attempt to repair the original equipment or accessories by unauthorized individuals will void the warranty.

NOTES

Some features discussed in this manual require a separate purchase, and some features are only available on international models. Every effort has been made to clearly identify those features. Please read the manual carefully in order to understand the full capabilities of your model.

The illustrations in this manual may not look the same as your product, but your unit will function in a similar way.

To purchase accessories or any additional equipment for your configuration, visit our Web site at humminbird.johnsonoutdoors.com or contact Humminbird Technical Support at **1-800-633-1468**.

The procedures and features described in this manual are subject to change without notice. This manual was written in English and may have been translated to another language. Humminbird is not responsible for incorrect translations or discrepancies between documents.

Product specifications and features are subject to change without notice.

Humminbird verifies maximum stated depth in saltwater conditions, however actual depth performance may vary due to transducer installation, water type, thermal layers, bottom composition, and slope.

For MEGA Live 2 Imaging troubleshooting and maintenance information, please see your **MEGA Live 2 Imaging Installation Guide**. The guide can also be downloaded from our Web site at humminbird.johnsonoutdoors.com.

ENVIRONMENTAL COMPLIANCE STATEMENT: It is the intention of Johnson Outdoors Marine Electronics, Inc. to be a responsible corporate citizen, operating in compliance with known and applicable environmental regulations, and a good neighbor in the communities where we make or sell our products.

WEEE DIRECTIVE: EU Directive 2002/96/EC “Waste of Electrical and Electronic Equipment Directive [WEEE]” impacts most distributors, sellers, and manufacturers of consumer electronics in the European Union. The WEEE Directive requires the producer of consumer electronics to take responsibility for the management of waste from their products to achieve environmentally responsible disposal during the product life cycle.

WEEE compliance may not be required in your location for electrical & electronic equipment (EEE), nor may it be required for EEE designed and intended as fixed or temporary installation in transportation vehicles such as automobiles, aircraft, and boats. In some European Union member states, these vehicles are considered outside of the scope of the Directive, and EEE for those applications can be considered excluded from the WEEE Directive requirement.



This symbol (WEEE wheelie bin) on product indicates the product must not be disposed of with other household refuse. It must be disposed of and collected for recycling and recovery of waste EEE. Johnson Outdoors Marine Electronics, Inc. will mark all EEE products in accordance with the WEEE Directive. It is our goal to comply in the collection, treatment, recovery, and environmentally sound disposal of those products; however, these requirements do vary within European Union member states. For more information about where you should dispose of your waste equipment for recycling and recovery and/or your European Union member state requirements, please contact your dealer or distributor from which your product was purchased.

ROHS STATEMENT: Product designed and intended as a fixed installation or part of a system in a vessel may be considered beyond the scope of Directive 2002/95/EC of the European Parliament and of the Council of 27 January 2003 on the restriction of the use of certain hazardous substances in electrical and electronic equipment.

APEX™, MEGA Live 2 Imaging™, Down Imaging®, Fortrex™, Humminbird®, Minn Kota®, Side Imaging®, SOLIX®, TargetLock™, Ultrex™ and XPLORE™ are trademarked by or registered trademarks of Johnson Outdoors Marine Electronics, Inc.

Adobe, Acrobat, Adobe PDF, and Reader are either registered trademarks or trademarks of Adobe Systems Incorporated in the United States and/or other countries.

TABLE OF CONTENTS

Introduction	5	Turn On/Off Overlays	30
Important Information	5	Zoom In/Out	31
Humminbird Fish Finder	5	Activate the Cursor	31
MEGA LIVE 2 Imaging Sonar	6	Zoom In/Out	31
Power On and Confirm Connections	8	Mark and Display Waypoints	32
1. Power On the MEGA Live 2 Imaging Transducer and the Fish Finder	8	Start and Stop Recording	34
2. Confirm MEGA Live 2 Connection on the Humminbird Fish Finder	8	Start Recording	34
3. Confirm GPS Reception	10	Stop Recording	34
Update Software	12	Play a Recording	34
Register Products	12	Stop Playback	35
Check the Current Software Version	12	Delete a Recording	35
Update Fish Finder Software with an SD Card	12	MEGA Live 2 TargetLock	36
Update Accessory Software with an SD Card	13	Set Up Your MEGA Live 2 Imaging TargetLock Devices	36
Update Software with One-Boat Network App	13	What's on the MEGA Live 2 Imaging TargetLock Display ...	39
Set Up MEGA Live 2 Imaging on the Network	14	Steer Left or Right	40
Networking	14	Turn On/Off TargetLock	40
Set Deployment Depth and Installation Type	15	Turn On/Off Sweep	40
Start/Stop MEGA Live 2 Imaging Operation	16	Turn On/Off Minn Kota Steer	40
Start Pinging	16	Customize Your TargetLock Foot Pedal or Remote	41
Stop Pinging	16	Power Off	42
Wet Switch	17	Contact Humminbird	43
What's on the MEGA Live Imaging Display	18		
MEGA Live Imaging Views	19		
Open a MEGA Live 2 View	19		
MEGA Live 2 View	21		
MEGA Live 2 Combo Views	22		
View Options	23		
Change the MEGA Live 2 Mode	24		
Understanding the MEGA Live Modes	24		
Change the MEGA Live Modes	24		
Set the Display Mode	25		
Turn TargetBoost On/Off	25		
Change the MEGA Live 2 View Display Settings	27		
Change the View Color	27		
Adjust Sensitivity and Contrast	28		
Adjust Range	29		
Turn On/Off Persistence	30		

INTRODUCTION

Thank you for purchasing the Humminbird® MEGA Live™ 2 Imaging transducer. We encourage you to read this manual carefully in order to understand MEGA Live 2 Imaging and how to use this Humminbird advanced accessory on the water. Some of the equipment requirements and menu options depend on your fish finder. Whether you have an APEX™, SOLIX® or XPLORE™ fish finder, every effort has been made to clearly identify those features throughout this manual.

Important Information

Before you use the MEGA Live 2 Imaging transducer on the water, it is important to understand the following:

Speed	The MEGA Live 2 Imaging transducer is intended for use at trolling speeds. The transducer should NOT be in the water during high speed travel.
Obstructions	Be aware of obstructions in the water that could damage the transducer.
Powering Off	When the boat is at dock or in storage, the MEGA Live 2 Imaging transducer should be turned off at the switch to prevent wear and tear. See Power Off for more information.
Setting Up the Fish Finder	The fish finder must be set up correctly to add the MEGA Live 2 Imaging features to the Menu System and View Rotation. See Set Up MEGA Live 2 on the Network and MEGA Live 2 Imaging Views .

Humminbird Fish Finder

This accessory manual describes the functionality that is added to your APEX, SOLIX or XPLORE fish finder when it is connected to the MEGA Live 2 Imaging transducer. For additional information about the Humminbird fish finder operations, see your Humminbird operations manual. To download the manual from our Web site, go to humminbird.johnsonoutdoors.com.

Compatibility

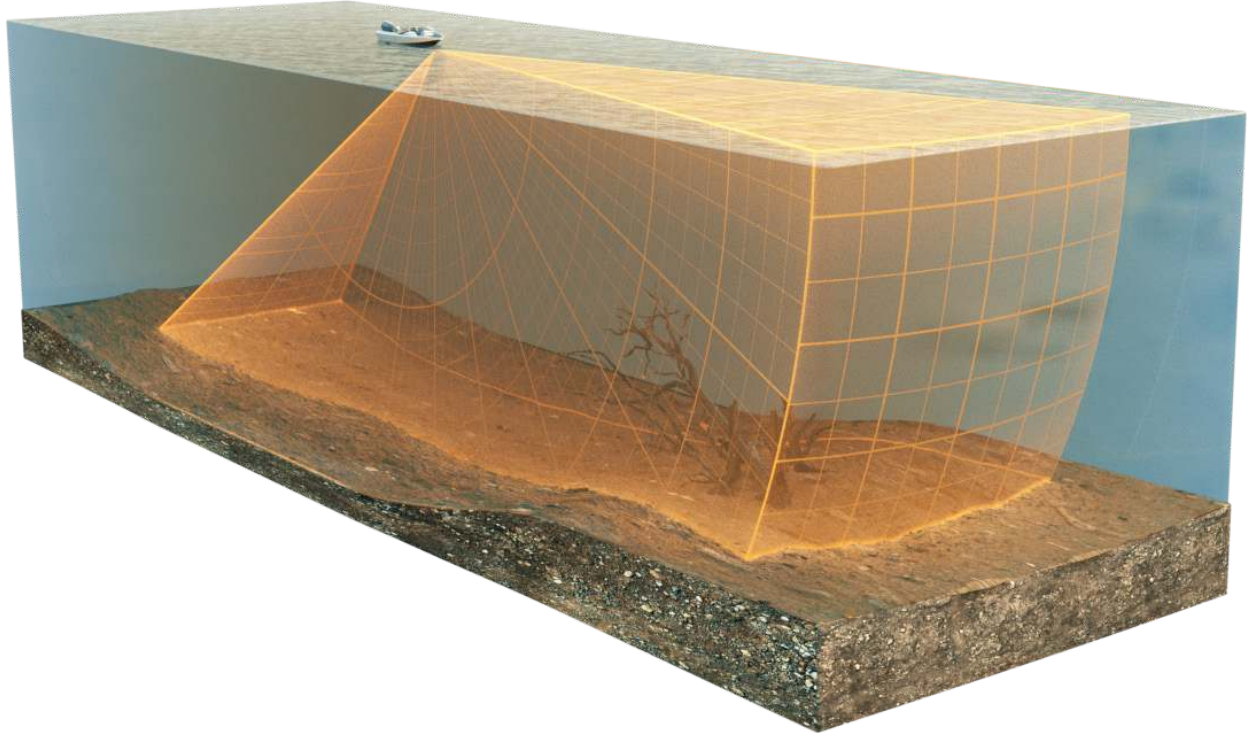
MEGA Live 2 Imaging is compatible with all APEX models, SOLIX G3 models, and all XPLORE models.

MEGA LIVE 2 IMAGING SONAR

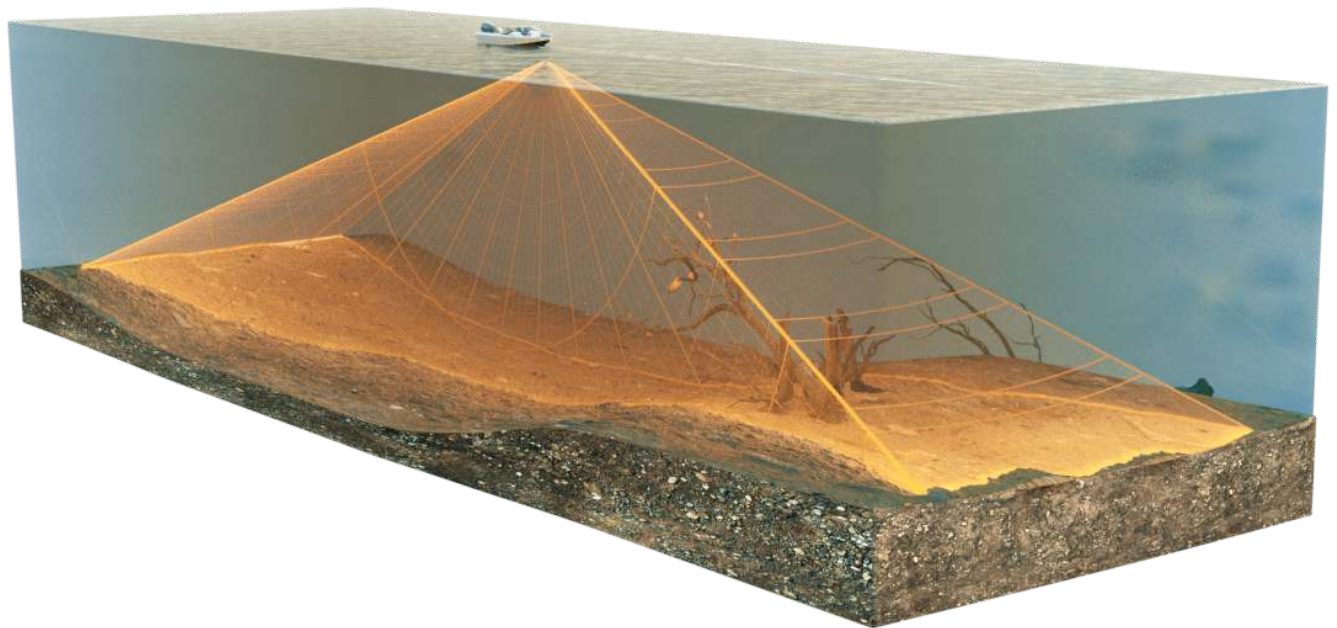
The MEGA Live 2 Imaging transducer deploys into the water with the your Minn Kota® Ultrex™ or Fortrex® trolling motor. See the installation guide that was included with your MEGA Live 2 for more information.

Multiple viewing options provided by the included trolling motor shaft mount allow for a view of the area in front of, around, and below your boat. Watch fish and structure in real-time with a range of up to 150 feet and without gaps in sonar coverage.

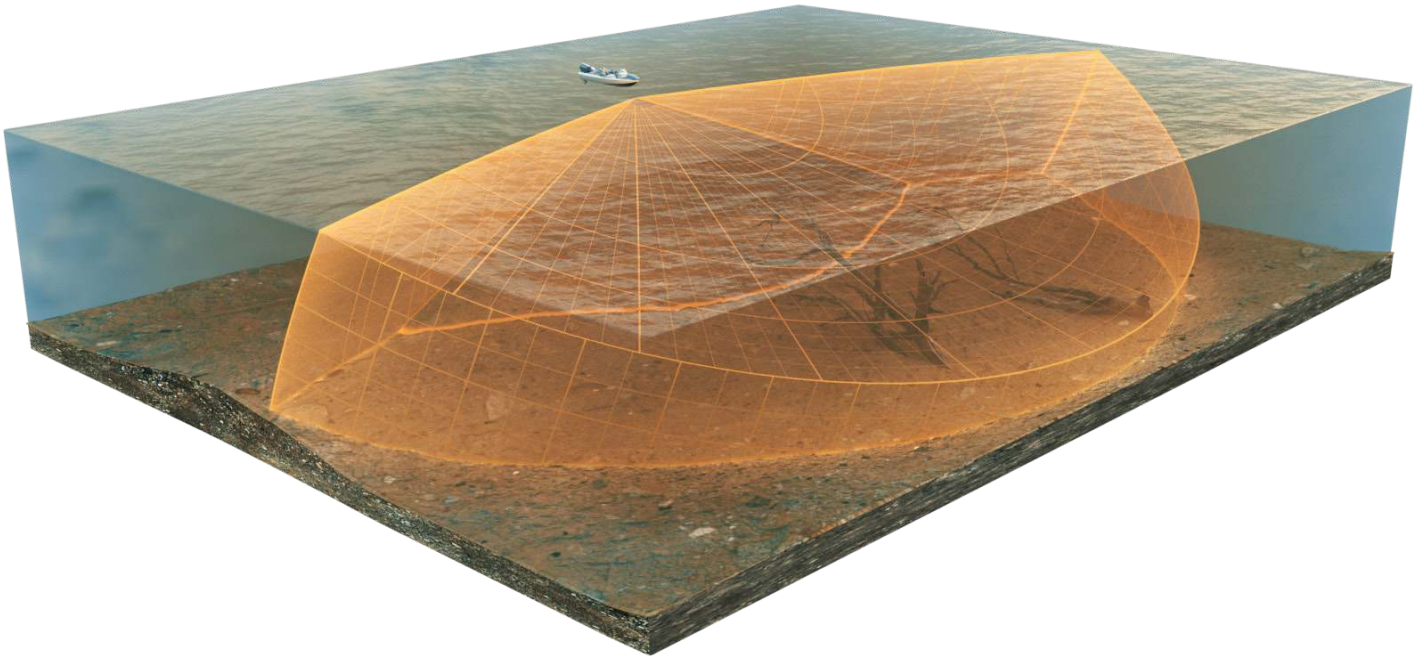
Forward View



Down View



Landscape Mode



NOTE

The transducer's performance is affected by such factors as boat speed, wave action, bottom hardness, water conditions, and installation.

POWER ON AND CONFIRM CONNECTIONS

All equipment should be connected and powered before you turn on the fish finder. See the *MEGA Live 2 Imaging Installation Guide* for more information.

When the fish finder detects the MEGA Live 2 Imaging transducer, it will subscribe to it automatically as a sonar source. The related views and menus will be added to the system. Use the following instructions to power on the fish finder and confirm the MEGA Live 2 Imaging transducer and the optional GPS receiver/compass (heading sensor) are detected by the unit.

⚠ CAUTION

It is important to finish all installation connections before powering on the fish finder.

1 | Power On the MEGA Live 2 Imaging Transducer and the Fish Finder

1. Turn on the power source from the main switch.
2. On the fish finder, press the POWER key.
3. Select Normal mode.

2 | Confirm MEGA Live 2 Connection on the Humminbird Fish Finder

You can confirm the MEGA Live 2 connection by checking the system status bar from the Home screen. Each accessory connected to the Humminbird fish finder is represented by a status icon in the system status bar.





Status Bar (top of screen)



1. Press the HOME key.
2. Review the top, right corner of the status bar.

Confirm MEGA Live 2 is shown as Connected and In Water. It may take up to one minute for the MEGA Live 2 to be detected.

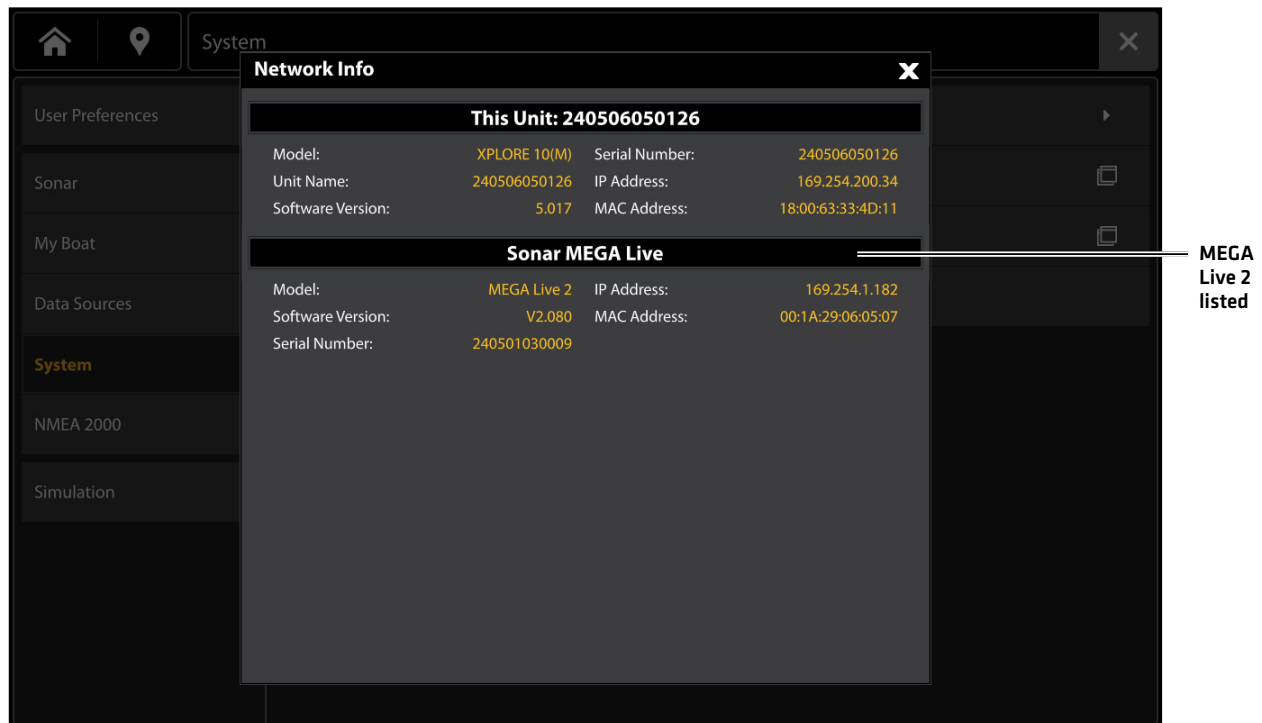
Unconnected: If the MEGA Live 2 icon is not shown in the status bar, check the cable and power connections to confirm they are secure and powered on. Review the installation guide that was included with your MEGA Live 2 Imaging transducer to confirm it is installed correctly.

MEGA Live 2 Status Icon	Icon Description
	Connected/In Water/Pinging: The MEGA Live 2 is connected, in the water, and pinging.
	Connected/In Water/Not Pinging: The MEGA Live 2 is connected and in the water, but it is not pinging.
	Connected/Out of Water: The MEGA Live 2 is connected, but the wet indicator is out of the water.
	Connection Lost: The MEGA Live 2 was previously connected, but the connection has been lost.

NOTE

For additional system status, select Home > Settings > System > Network Info.




MEGA Live 2 Transducer Connected





3 | Confirm GPS Reception

Use the instructions in this section to confirm the fish finder has GPS reception. GPS and a compass (heading sensor) are required to enable the boat icon on the fish finder with the MEGA Live 2 Imaging transducer. A heading sensor is also required to enable some MEGA Live TargetLock features (separate purchase required).

1. From the Home screen, review the top, right corner of the status bar, and confirm the GPS receiver is detected and active.

GPS Status Icon	Icon Description
	Detected and Active: The GPS receiver is detected and a GPS fix has been obtained.
	Connected but not Detected or Active: The GPS receiver is connected, but not detected on the network or no GPS fix has been obtained.
	Connected but not Transmitting/Receiving: The GPS receiver is detected, but it doesn't have a GPS fix.

2. If the Detected and Active icon is visible, GPS fix has been obtained.
3. From the HOME screen, review the top, right corner of the status bar, and confirm the compass (heading sensor) is on and data is being received.

Compass Status Icon	Icon Description
	Detected and Active: The compass (heading sensor) is on and heading data is being received.
	Connected but not Detected or Active: The compass is not detected on the network and not transmitting data.

Check GPS Reception and Satellite Strength

The GPS tool provides two ways to view the satellites communicating with the GPS receiver. **Yellow** indicates that the satellite is being used to determine your current position. **Teal** indicates that the satellite is being monitored but not used. The following data is also displayed:

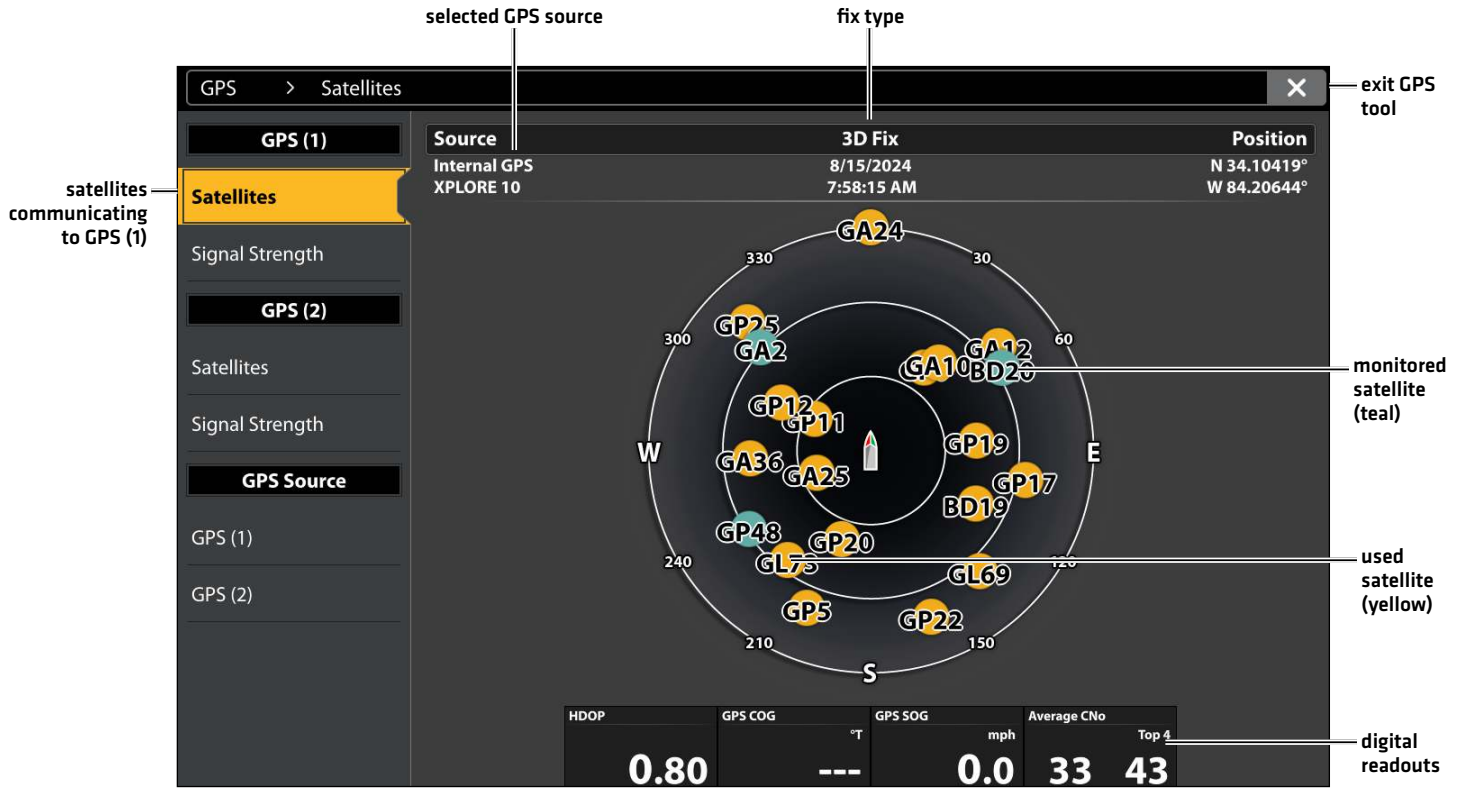
- **Position** [latitude and longitude]
- **GPS Fix Type:** reported as No Fix, 2D Fix, 3D Fix, or Enhanced. An Enhanced fix has been augmented using information from WAAS, EGNOS, or MSAS. A 3D or Enhanced Fix is required for navigation.
- **HDOP (the Horizontal Dilution of Precision):** a GPS system parameter which depends on the current satellite configuration. HDOP is used to calculate the Estimated Position Error.

1. Press the HOME key.
2. Select Tools.
3. Select the GPS tool.
4. Depending on your network configuration, select **GPS [1] > Satellites** or **GPS [2] > Satellites**.

NOTE

You can manually change which GPS receiver is the selected source for GPS [1] or GPS [2]. For more information about GPS and selecting GPS sources, see your control head operations manual.

GPS [1] Satellite Sky Chart



5. Under GPS [1] or GPS [2], select Signal Strength.

Signal Strength (bar graph)



Signal Strength (GPS 1/GPS 2): displays vertical bar graphs indicating the satellite signal strengths with the respecting CNO (Carrier-to-Noise) value (0 to 60).

UPDATE SOFTWARE

Your fish finder model may need a software update to work with the MEGA Live 2 Imaging transducer. We recommend that you read the following section completely before starting any software updates.

Fish Finder Required Software: The following fish finder software version is required to operate the MEGA Live 2 Imaging transducer:

- 5.0 or higher

MEGA Live 2 Software: The MEGA Live has separate software updates from the fish finder. After the software is updated on the fish finder, you must download any accessory software updates. See your fish finder operations manual for more details.

Preparation: We recommend that you read the following section completely before starting any software updates. The Humminbird fish finder will take approximately 10 minutes to update, and each Humminbird fish finder on the network must be updated individually. Accessories take approximately 5 minutes to update.

Supplies: In addition to your Humminbird equipment, you will need a computer with Internet access and a blank 32GB SD or microSD card [depending on your fish finder].

Technical Support: If you have any questions about the software update process, contact Humminbird Technical Support through our Help Center at <https://humminbird-help.johnsonoutdoors.com/hc/en-us>.

Register Products

Register your Humminbird equipment so that you will receive the latest Humminbird news, including accessory compatibility and software update information.

1. Go to our Web site at humminbird.johnsonoutdoors.com. Select Support > Register Your Product.
2. Follow the on-screen prompts to register your products.

Check the Current Software Version

It is helpful to review the software version number that is currently installed on the fish finder and each accessory.

1. Press the HOME key.
2. Select Settings.
3. Select System.
4. Select System Info.

Review the software version number listed.

Update Fish Finder Software with an SD Card

NOTES

If you have more than one fish finder on the network, go to each fish finder to install the latest software update. Fish finder software updates cannot be updated through another networked unit.

When you install the SD card with the software file into your fish finder, the fish finder will detect the update and provide an automatic prompt to install the software. You can follow the prompts or choose to install the software at a later time. See your fish finder operations manual for more information.

To ensure a smooth update process, keep the unit powered on until the update is fully completed. Interrupting the power supply during the update can result in system instability or data loss.

1. Install a formatted SD or microSD card into the computer card slot.
2. Go to humminbird.johnsonoutdoors.com, and click Support > Software Updates.
3. Click on your fish finder model. The available software updates are listed as downloads under each product. Confirm the file name is for your fish finder model.
 - Read the notices and instructions, and select Download.

- Follow the on-screen prompts to save the software file to the SD or microSD card.
4. Power on your Humminbird fish finder. Start **Normal** mode.
 5. Install the SD card with the software file[s] into the fish finder card slot.
 6. Follow the on-screen prompts to update the fish finder software.
 7. When the software update is complete, remove the SD or microSD card from the fish finder card slot.

Update Accessory Software with an SD Card

1. Install a formatted SD or microSD card into the computer card slot.
2. Go to humminbird.johnsonoutdoors.com, and click Support > Software Updates.
3. Scroll down to Accessories and Mapping. The available software updates are listed as downloads under each accessory product. Confirm your fish finder model is listed in the software description.
 - Read the notices and instructions, and select Download.
 - Follow the on-screen prompts to save the software file to the SD or microSD card.
4. Power on your Humminbird fish finder. Start **Normal** mode.
5. Insert the SD or microSD card (with the software file) into the fish finder card slot.
6. Select Tools > Software Updates. Scroll to MEGA Live 2 on the Accessories list. Confirm that the most current software version is selected from the list, and select Install Now.
7. When the software update is complete, remove the SD or microSD card from the fish finder card slot.

Update Software with the One-Boat Network App

You can use the One-Boat Network App to download and push software updates directly to your Humminbird fish finder or accessory.

NOTES

Your fish finder must already be running software release 4.130 or higher to support this feature.

You must first download the One-Boat Network App and pair your Minn Kota and Humminbird compatible products.

1. Open the One-Boat Network App on your mobile device.
2. Tap Network + Updates.
3. Tap Download Update next to the Humminbird device you want to update. The download progress is displayed on the screen.
4. Tap Transfer Software next to the selected device once the download is complete.
5. Confirm the estimated transfer time.
6. Tap the radial button to select where to upload the software update (internal storage, SD card 1, or SD slot 2).

NOTE

You cannot download software updates to an SD or microSD card with LakeMaster charts saved to it.

7. Tap Start Transfer (Apple iOS) or Transfer (Google Android).
The upload progress is displayed under the selected unit in the One-Boat Network App and in the System Status view on the fish finder.
8. Follow the on-screen prompts on the fish finder to complete the software installation.

SET UP MEGA LIVE 2 IMAGING ON THE NETWORK

Use the instructions in this section if you have more than one MEGA Live 2 connected to the network. Configuring the network synchronizes the fish finder settings.

Before you start, make sure all of your fish finders and sources (GPS, transducers, temp/speed accessories, etc.) for your fishing system have been installed. See the equipment installation guides for details. You may need to purchase an Ethernet switch, Ethernet connection cables, or y-cables, depending on your setup.

When the Humminbird network is installed, each fish finder automatically selects a primary source (transducer, temperature, and GPS). The fish finder selects the equipment connected to it as its primary source, but you can choose any compatible source on the network. Make sure to review the **MEGA Live 2 Imaging Installation Guide** to ensure MEGA Live 2 Imaging is set up as the sonar source.

Networking

Your fish finder will automatically detect and subscribe to MEGA Live 2 Imaging, and the related views and menus will be added to the fish finder. Use the following instructions to change the selected sonar source.

View the Sonar Source

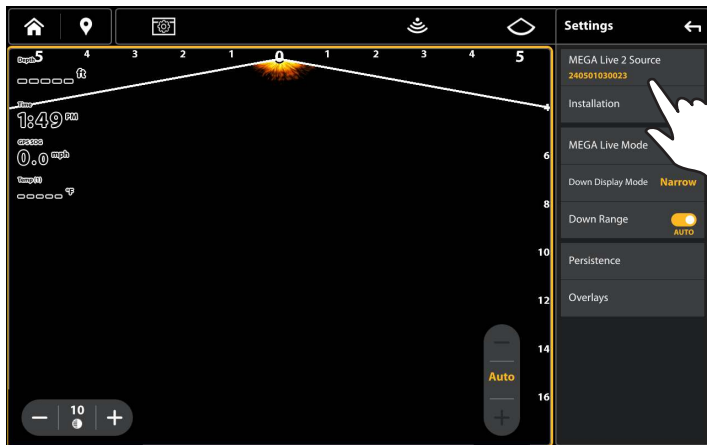
1. **X-Press Menu:** With the MEGA Live 2 View displayed on-screen, press the MENU key once, or tap the Menu button on the top bar.
2. Select Settings.
3. MEGA Live 2 transducer is listed under MEGA Live 2 Source.

Select Sonar Source

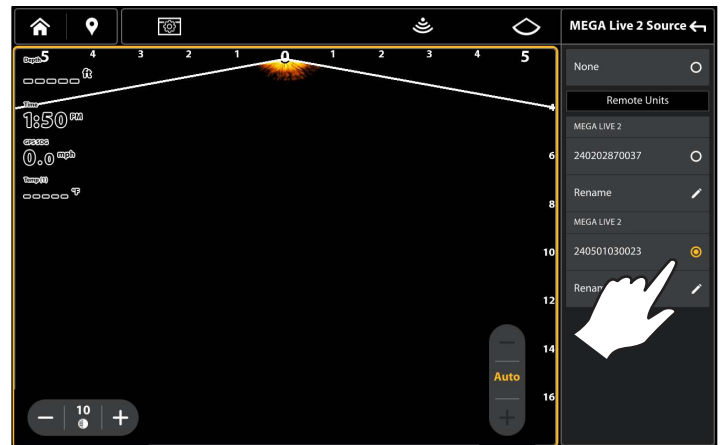
Use the instructions in this section to assign sonar sources to each fish finder. The sonar sources can be shared between fish finders or you can use different sonar sources on each fish finder.

1. **X-Press Menu:** With the MEGA Live 2 View displayed on-screen, press the MENU key once, or tap the Menu button on the top bar.
2. Select Settings.
3. Select MEGA Live 2 Source.
4. Select the MEGA Live 2 source to subscribe to the fish finder.

MEGA Live 2 Source



MEGA Live 2 Change Source



SET DEPLOYMENT DEPTH AND INSTALLATION TYPE

This section will guide you through the following fish finder setup instructions:

- Setting the Installation Depth
- Selecting Port or Starboard Depth
- Calibrating the MEGA Live transducer

Change the MEGA Live Installation Settings

If the position of objects on the display are slightly different than what you observe in the environment around you, use these menu options to adjust the display and correct the alignment. See the *MEGA Live 2 Imaging Installation Guide* for more information.

1. **X-Press Menu:** With the MEGA Live 2 View displayed on-screen, press the MENU key once, or tap the Menu button on the top bar.
2. Select Settings.
3. Select Installation.
4. Tap a menu option or use the Joystick or Cursor pad to select it. Adjust the setting using the touch screen or keys, as follows:

Installation Depth	Set the depth of the water from the surface to the MEGA Live 2 Imaging transducer.
Forward/Down Installation	Select your installation type: Normal or Flipped.
Landscape Installation	Select your installation type: Normal or Flipped. [This menu only displays if MEGA Live Mode is set to Landscape.]
Stabilization	Auto-Orientation: Turn on to automatically select the orientation of the transducer [Down, Forward, or Landscape]. Forward Mode Angle: If Auto-Orientation is turned off, adjust the Forward Mode Angle. Pitch and Roll: Turn on to stabilize the bottom of the sonar returns.
Calibrate MEGA Live Transducer	Turn MEGA Live Calibration on or off. Select to calibrate the MEGA Live 2 transducer to optimize the sonar return. Select the toggle to turn MEGA Live Calibration on and off.

START/STOP MEGA LIVE 2 IMAGING OPERATION

Use the instructions in this section to start and stop the MEGA Live 2 Imaging ping.

Start Pinging

The transducer deploys into the water with the trolling motor. You can then start pinging from the MEGA Live 2 View or from the Menu System.

Start Pinging from a MEGA Live 2 View

When a MEGA Live 2 Imaging transducer is connected to the fish finder, the MEGA Live 2 View will be automatically added to the view database.

1. From the Home screen, tap the Views icon in the menu tray.

NOTE


Once the MEGA Live 2 has been detected the first time, the MEGA Live 2 view will display on the Favorite Views.

2. Tap MEGA Live 2 and select your preferred MEGA Live 2 view.
3. The sonar returns from the MEGA Live 2 will begin to display on the MEGA Live 2 View.

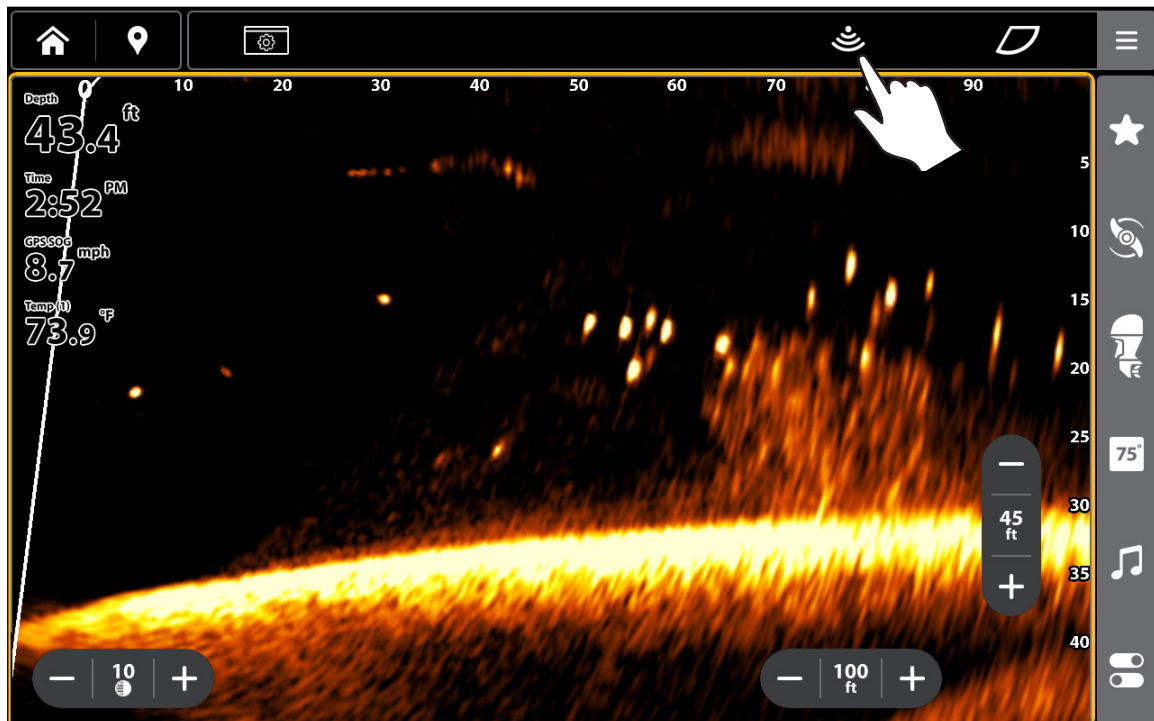
Stop Pinging

1. With a MEGA Live 2 View or MEGA Live 2 Combo View displayed on the screen, tap PING ON/Off button on the MEGA Live 2 top bar.

Ping on: 

Ping off: 

Pinging On/Off from the Top Bar



Wet Switch

The MEGA Live wet switch automatically stops MEGA Live pinging while the transducer is out of the water in order to prevent wear and tear. Your fish finder will display the following message: MEGA Live Disabled Out of the Water.

Out of the Water Notification

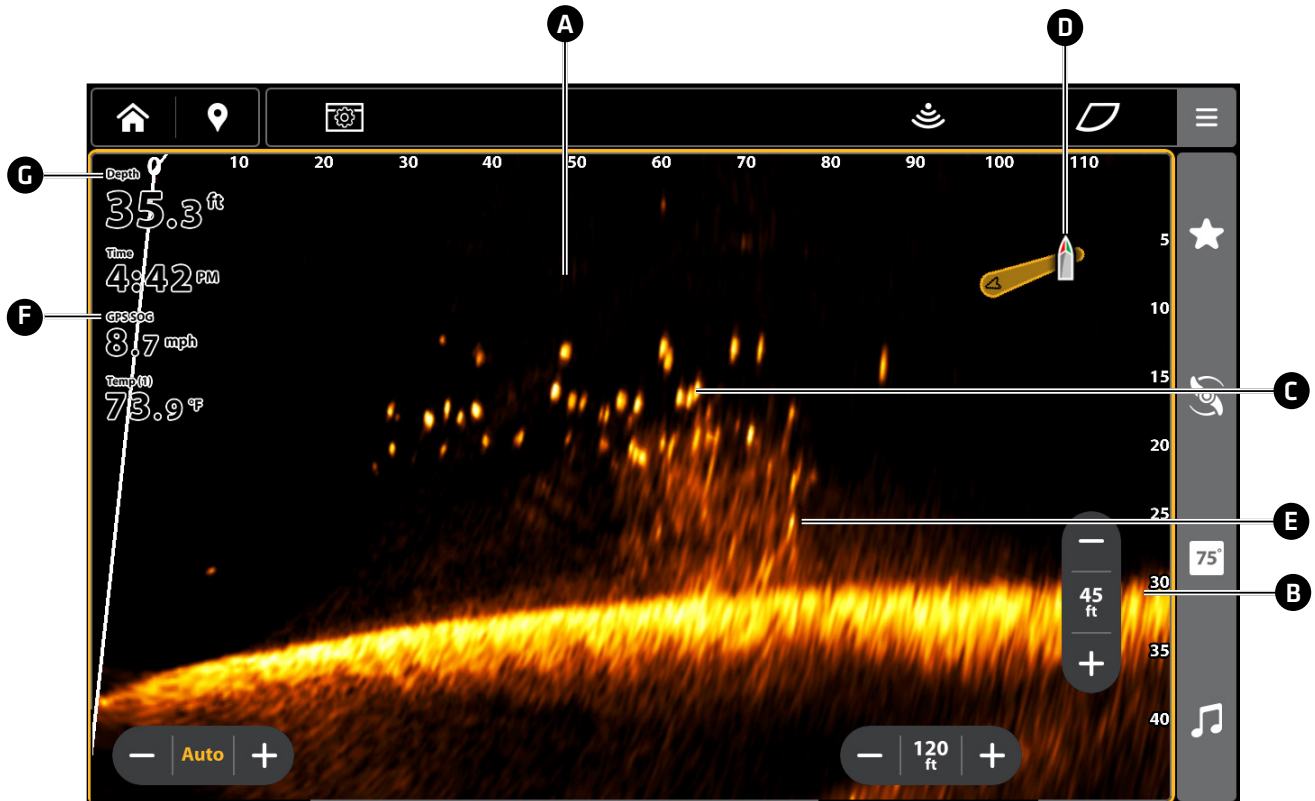


WHAT'S ON THE MEGA LIVE 2 IMAGING DISPLAY

MEGA Live 2 Imaging uses its unique transducer to provide an unobstructed view of the water in front of, around, and below your boat. The high-definition beams produce the detailed sonar data that you see on the display. MEGA Live 2 Imaging reveals a variety of recognizable features so that you can interpret the structure and bottom contour, and the following items in this illustration.

NOTE

Available features depend on your MEGA Live 2 model. You may have more features than illustrated below. See *MEGA Live TargetLock* for more information.



- A Water Column:** Shows the relative depth of the water under the boat at a given time. Variations in the width of the water column show variations in the distance to the bottom as the boat passes over.
- B Bottom Return**
- C Fish**
- D Boat Icon:** The boat icon shows the orientation of the transducer relative to the boat [GPS heading sensor required].
- E Structure:** Cover where fish may be hiding.
- F Speed:** The measurement of the boat's progress across a given distance [GPS required].
- G Depth:** The depth of the water as provided by another attached transducer [see *Set Up MEGA Live 2 Imaging on the Network*].

MEGA LIVE 2 IMAGING VIEWS

Open a MEGA Live 2 View

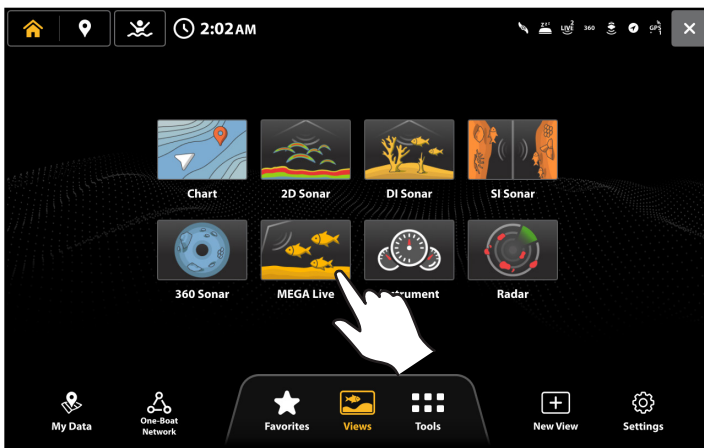
When the MEGA Live 2 Imaging transducer is set up on the fish finder, the MEGA Live 2 View is added to the Favorites and Views tools, and additional combo views are available from the Views tool.

Display a View from the Views Tool

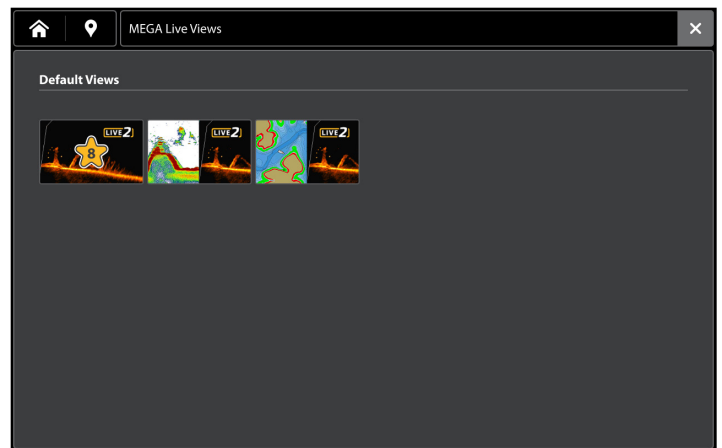
The Views tool includes the complete database of available views for your fish finder.

1. Press the HOME key.
2. Select the Views tool.
3. Select the MEGA Live group.
4. Tap the View you would like to display.

MEGA Live 2 from View Tool



MEGA Live 2 Default Views



Display a View from the Favorites Tool

The Favorites tool provides a quick selection of your favorite views. The MEGA Live 2 view is automatically added to the Favorites tool when it is connected to your fish finder.

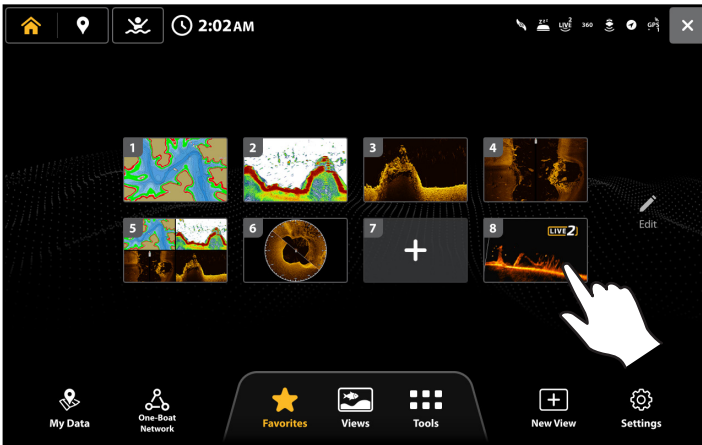
1. Press the HOME key.
2. Select the Favorites tool.
3. Select the MEGA Live 2.

Display a View from the Favorite Side Bar

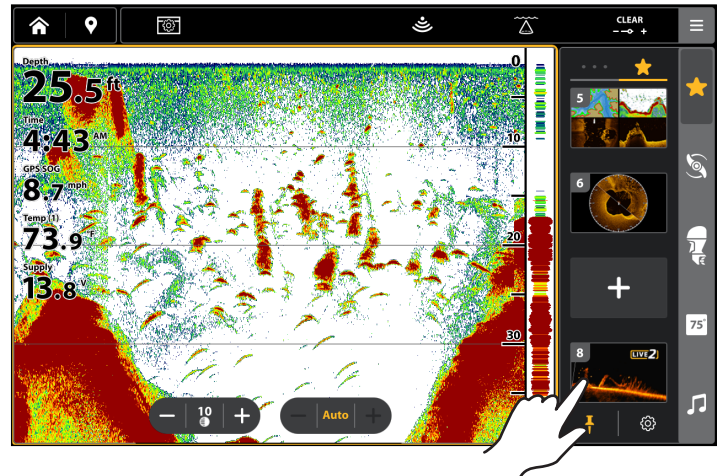
1. With a View displayed on screen, tap the Favorites icon in the side bar.
2. Tap a view to display.

Favorites seen on the Home Screen and within the side bar are the same.

MEGA Live 2 from Favorites Tool



MEGA Live 2 from Favorites Side Bar

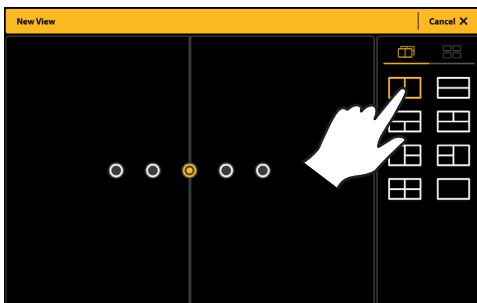


Create a New View

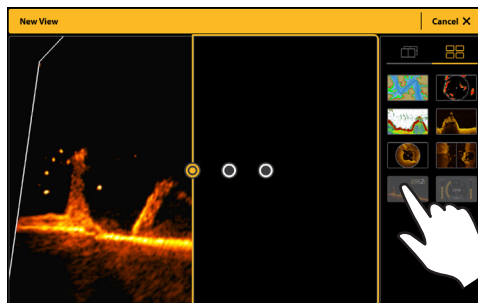
Customize your own view using the New View tool. Use the New View tool to change the type of data that is displayed in the view and how many panes are displayed.

1. Press the HOME key.
2. Select New View.
3. Select a Pane Layout from the Layout tab.
4. Tap a circle to adjust the pane size.
5. Tap a pane to highlight it, and select an application from the Application tab.
6. Repeat Step 5 for each pane.
7. Tap Save.

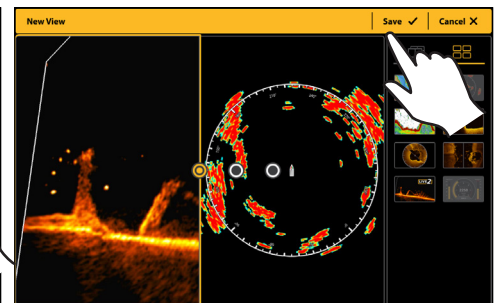
Selecting a Pane Layout



Selecting the Application Type



Saving the View



MEGA Live 2 View

The MEGA Live 2 View allows you to see the MEGA Live 2 Imaging data on the full screen.

MEGA Live 2 Top Bar	The top bar allows you to start or stop pinging, adjust the view options, change the MEGA Live mode, and open the X-Press Menu.
MEGA Live 2 X-Press Menu	The X-Press Menu allows you to adjust the sensitivity, contrast and beam range, change the color, and customize the display. Tap the Menu icon in the top bar or press the MENU key once.
Cursor and Zoom	Use the Cursor pad/Joystick to move the cursor over a sonar return. Press the + [ZOOM] key or pinch and drag with your fingers to magnify the view. See Zoom In/Out for more information.
Mark and Display Waypoints	You can mark and display waypoints on the MEGA Live 2 View when your MEGA Live 2 is in Landscape Mode. See Mark and Display Waypoints .
Digital Readouts	Digital Readout data can be displayed on-screen as an overlay or in data boxes. To change the overlay displayed on the screen, tap the View Options button in the top bar, and then select Data Overlays. Tap an overlay to change, and select the type of data to display in the Data Overlays menu. To change a data box from the data bar in the side bar, tap and hold the data box to edit it. To keep the data bar displayed on the view, tap the pin icon at the bottom of the data bar.

NOTE

Digital readouts may change with the selected view, attached accessories, and whether or not the fish finder is navigating. See your fish finder operations manual for details.

MEGA Live 2 Combo Views

The Views tool provides two default MEGA Live 2 combo views. The New View tool allows you to create a combo view with MEGA Live 2, but MEGA Live 2 requires 50 percent of the screen.

MEGA Live 2/Sonar Combo View

The MEGA Live 2/Sonar Combo View shows sonar information and MEGA Live 2 Imaging information in a combination split screen, where the Sonar View is displayed on one pane and the MEGA Live 2 View is displayed on the other.

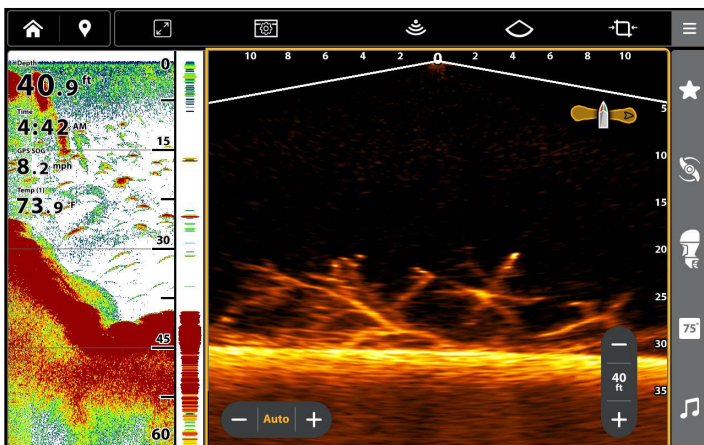
Active Side	The selected pane is outlined in yellow. Tap a pane to select it.
X-Press Menu	After you set the Active Side, press the MENU key once or tap the Menu button in the top bar to open the X-Press Menu. The X-Press Menu provides menu options for the active view.
Sonar	Use the Sonar View with the MEGA Live 2 View to maximize your sonar data.

MEGA Live 2/Chart Combo View

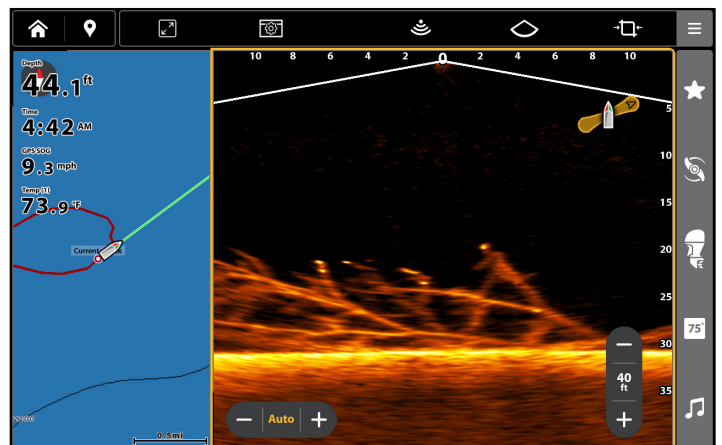
The MEGA Live 2/Chart Combo View shows chart information and MEGA Live 2 Imaging sonar information in a combination split screen, where the Chart View is displayed on one pane and the MEGA Live 2 View is displayed on the other.

Active Side	The selected pane is outlined in yellow. Tap a pane to select it.
X-Press Menu	After you set the Active Side, press the MENU key once or tap the Menu button in the top bar to open the X-Press Menu. The X-Press Menu provides menu options for the active view.
Navigation	Use the Chart View with the MEGA Live 2 View to determine the position of structure and fish. To mark waypoints on the MEGA Live 2 View, see Mark and Display Waypoints .

MEGA Live 2/2D Sonar Combo View




MEGA Live 2/Chart Combo View



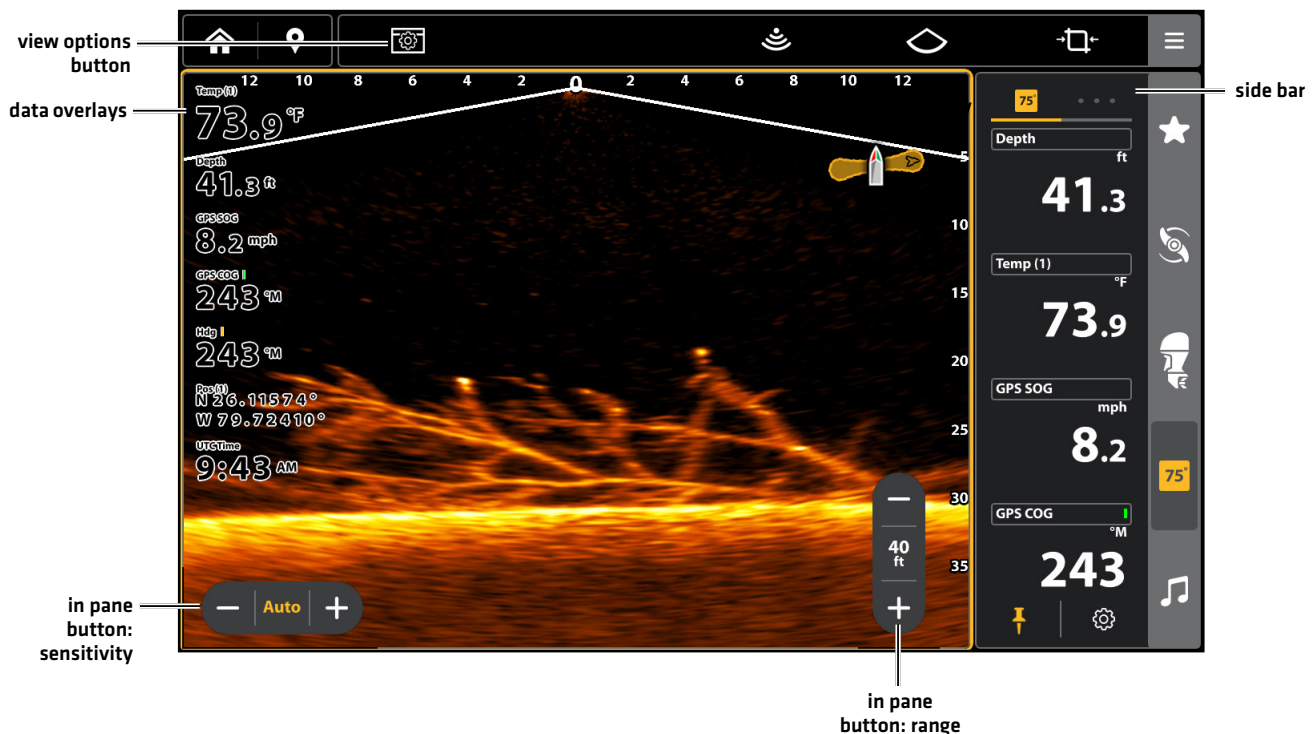
View Options

The View Options menu provides options to edit the selected view. You can open the View Options menu from the on-screen view.

1. With a View displayed on-screen, tap the View Options button  on the top bar.

Side Bar	<p>Check the side bar to show the minimized side bar on the right side of the view. Uncheck the side bar to hide it from view.</p> <p>Pin side bar: Toggle on to keep the side bar open.</p>
In Pane Buttons	<p>MEGA Live 2 has two in pane buttons: Sensitivity and Range.</p> <p>Check the In Pane buttons to show these buttons on the MEGA Live 2 view or uncheck to hide the buttons.</p>
Data Overlays	<p>Digital Readout data can be displayed on-screen as an overlay. Select Data Overlays to turn overlays on and off or to edit the overlay data displayed.</p>

MEGA Live 2 View Options

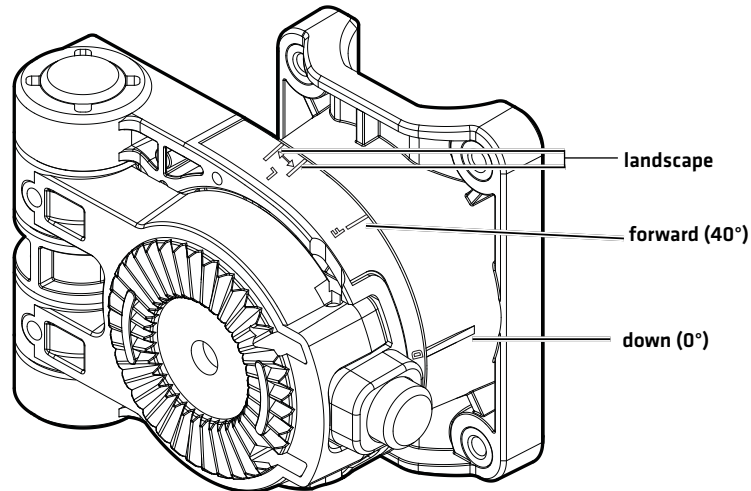


CHANGE THE MEGA LIVE 2 MODE

Understanding the MEGA Live 2 Modes

When you change the MEGA Live 2 Mode, you are changing the angle of your transducer. In Down Mode, your transducer is at 0°. As you rotate the mount by hand [see your *MEGA Live 2 Imaging Installation Guide* for more information], each “click” upwards raises your transducer angle by 7.5°, up to a maximum of 90°. In Landscape Mode, use higher angles [top marking] for shallow water and lower angles [bottom marking] for deeper water.

MEGA Live Mode Guides



Change the MEGA Live 2 Mode

Your fish finder will automatically select the best mode for your installation. Use the following instructions to manually change the MEGA Live 2 Mode to Down, Forward, or Landscape.

1. With a MEGA Live 2 View displayed on-screen, tap the MEGA Live Mode icon in the top bar.
2. Tap Auto, or use the Cursor pad and Enter key, to turn Auto off.
3. Tap, or use the Cursor pad and Enter key, to select a MEGA Live Mode.

Down Mode:

Forward Mode:

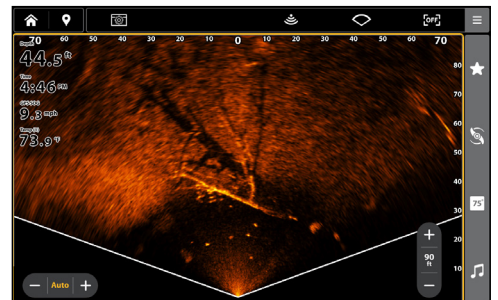
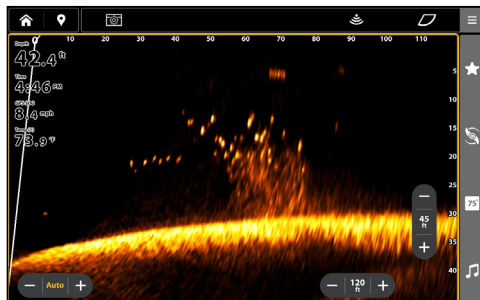
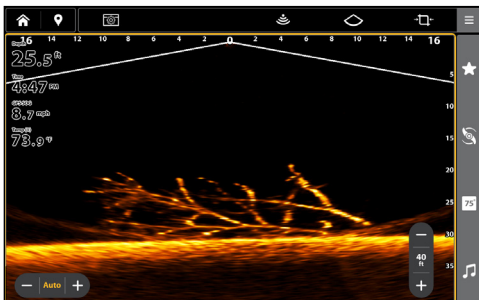
Landscape Mode:

When you manually change the MEGA Live Mode, a message box will display reminding you to also change the transducer's installation orientation. For instructions on changing the installation orientation, see your *MEGA Live 2 Imaging Installation Guide* or visit our Web site at humminbird.johnsonoutdoors.com.

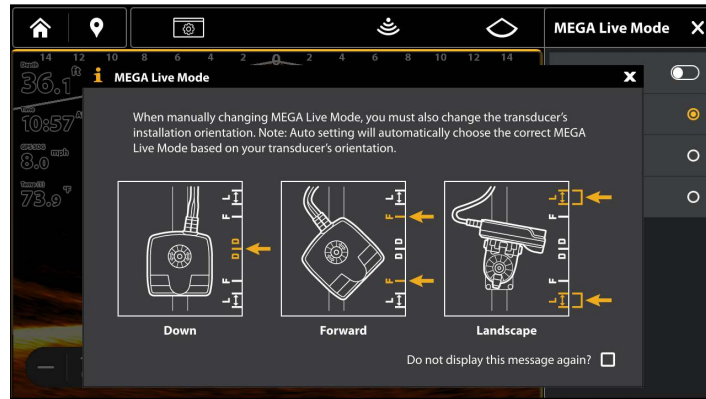
Down Mode

Forward Mode

Landscape Mode



MEGA Live Mode

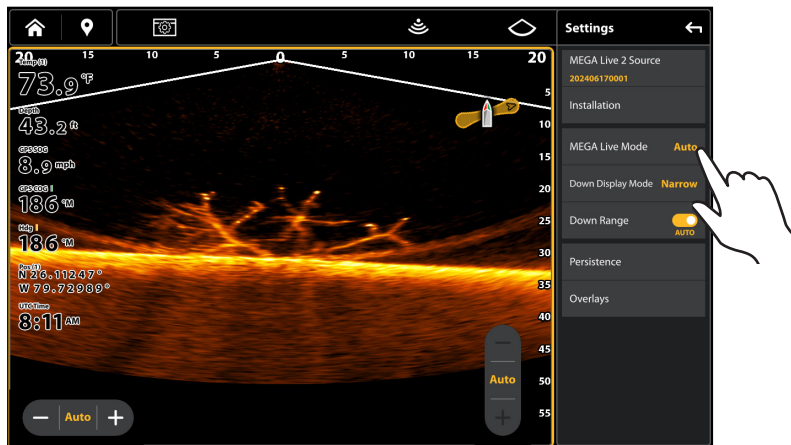


Change the MEGA Live Mode from the X-Press Menu

1. **X-Press Menu:** With the MEGA Live 2 View displayed on-screen, press the MENU key once, or tap the Menu button on the top bar.
2. Select Settings.
3. Select MEGA Live Mode.
4. Tap, or use the Cursor pad/Joystick and the ENTER key, to turn off Auto mode.
5. Select a MEGA Live Mode.

When you manually change the MEGA Live Mode, a dialog box will display reminding you to also change the transducer's installation orientation. For instructions on changing the installation orientation, see your *MEGA Live 2 Imaging Installation Guide* or visit our Web site at humminbird.johnsonoutdoors.com.

MEGA Live Mode from Settings



Set the Display Mode

When using your transducer in Down Mode, you can set the width of the data displayed.

Down Display Mode

1. With a MEGA Live 2 View displayed on-screen, tap the Down Display Mode icon in the top bar.
2. Tap, or use the Cursor pad/Joystick and ENTER key, to select a Display Mode.

- |← Narrow Mode
- | Full Mode
- ←|→ Wide Mode


OR

1. **X-Press Menu:** With the MEGA Live 2 View displayed on-screen, press the MENU key once, or tap the Menu button on the top bar.
2. Select Settings.
3. Select Down Display Mode.
4. Tap, or use the Cursor pad/Joystick and ENTER key, to select a Down Display Mode.

Down Display Mode	<p>Narrow: Select Narrow to see only the data directly under the transducer.</p> <p>Full: Select Full to reveal more information than Narrow.</p> <p>Wide: Select Wide to display the maximum information available from the MEGA Live 2 beam width.</p>
--------------------------	---



Turn TargetBoost On/Off

TargetBoost is available in landscape mode to improve seeing fish and lures in open water scenarios.

1. With a MEGA Live 2 View displayed on-screen, tap the TargetBoost icon  in the top bar.
2. Tap, or use the Cursor pad/Joystick and ENTER key, to turn TargetBoost on or off.

OR

1. **X-Press Menu:** With the MEGA Live 2 View displayed on-screen, press the MENU key once, or tap the Menu button on the top bar.
2. Select Settings.
3. Select TargetBoost.
4. Tap, or use the Cursor pad/Joystick and ENTER key, to turn TargetBoost on or off.

TargetBoost	<p>TargetBoost Off: </p> <p>TargetBoost On: </p>
--------------------	--

CHANGE THE MEGA LIVE 2 VIEW DISPLAY SETTINGS

Use the following instructions to change how the MEGA Live 2 View is displayed.

Some of the menu options in this section may be displayed in other parts of the menu system so that you can access them quickly. No matter where you make the change, the fish finder will update the setting across the system.

Change the View Color

Change the Color Palette

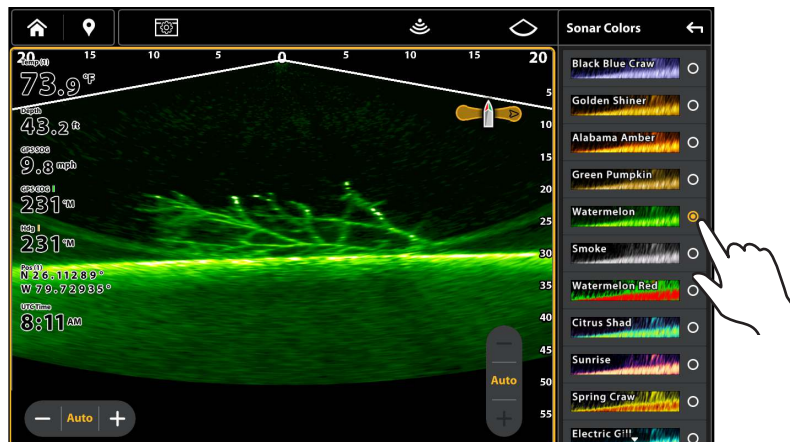
The MEGA Live 2 Imaging X-Press Menu allows you to quickly change the display palette while you fish.

NOTE

The palette you choose will be applied to all Mega Live 2 Views in the View database.

1. **X-Press Menu:** With the MEGA Live 2 View displayed on-screen, press the MENU key once, or tap the Menu button on the top bar.
2. Select Sonar Colors.
3. Tap a sonar color palette, or use the Cursor pad/Joystick or to select a palette.
4. **Close:** Tap the X icon or press the EXIT key.

Adjusting the Color



Adjust Dynamic Contrast

Dynamic Contrast automatically enhances the contrast of the selected color palette.

1. **X-Press Menu:** With the MEGA Live 2 View displayed on-screen, press the MENU key once, or tap the Menu button on the top bar.
2. Select Dynamic Contrast.
3. Tap, or use the Cursor pad/Joystick, to select an option.
4. **Close:** Tap the X icon or press the EXIT key.

Low	Preferred setting for lure tracking.
Balanced	Balanced performance of lure tracking and definition.
High	Preferred setting for seeing the clearest definition.

Adjust Sensitivity and Contrast

Sensitivity and contrast can be adjusted from the in pane button on the MEGA Live 2 view or from the X-Press menu.

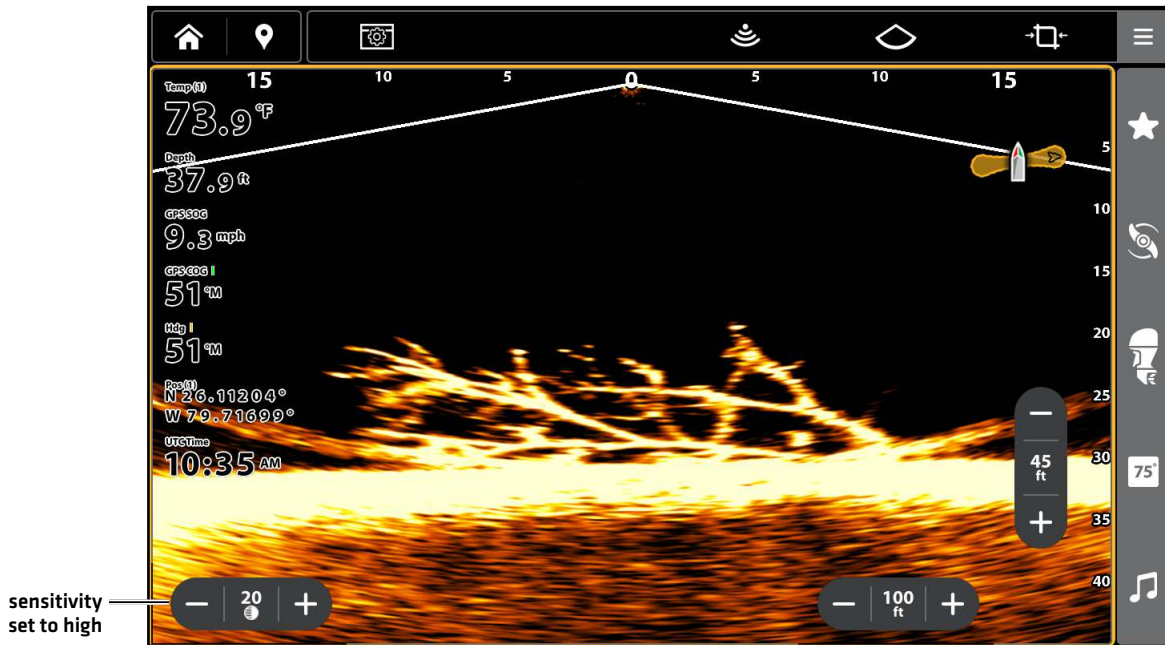
1. With a MEGA Live 2 View displayed on-screen, tap the + or - buttons on the in pane Contrast button to adjust the setting.

OR

1. **X-Press Menu:** With the MEGA Live 2 View displayed on-screen, press the MENU key once, or tap the Menu button on the top bar.
2. Select Sensitivity or Contrast.
3. Tap the + or - buttons or press the +/- [ZOOM] keys to adjust the setting.

Sensitivity	Sensitivity controls how much detail is shown on the display and will adjust the sensitivity of all sonar frequencies. Decrease the sensitivity to eliminate the clutter from the display that is sometimes present in murky or muddy water. When operating in very clear water or greater depths, increase the sensitivity to see weaker returns that may be of interest.
Contrast	Adjust the Contrast setting to accent the light and dark parts of the MEGA Live 2 Imaging data to provide greater definition. When Dynamic Contrast is turned on , the contrast will be automatically adjusted.

MEGA Live 2 Contrast and Sensitivity



NOTE

The Sensitivity and Contrast are set high in the above illustration. The high Sensitivity setting displays more weak returns on the display, and the high Contrast setting shows more definition between the light and dark returns.

Adjust Range

Range can be adjusted from the in pane button on the MEGA Live 2 view or from the X-Press menu.

1. With a MEGA Live 2 View displayed on-screen, tap the + or - buttons on the in pane Range button to adjust the setting.

OR

1. **X-Press Menu:** With the MEGA Live 2 View displayed on-screen, press the MENU key once, or tap the Menu button on the top bar.
2. Select Settings.
3. Select Range.
4. Press and hold the slider, or turn the Rotary dial, to adjust the setting.

Range

Range controls how far the MEGA Live 2 Imaging beams will ping. Select a low range number to focus on a shorter distance and see greater detail on the screen. Select a higher range number to see farther and see an overview of details on the screen.

QUICK TIP! You can also change this setting by using the ZOOM In and ZOOM Out keys.

NOTE

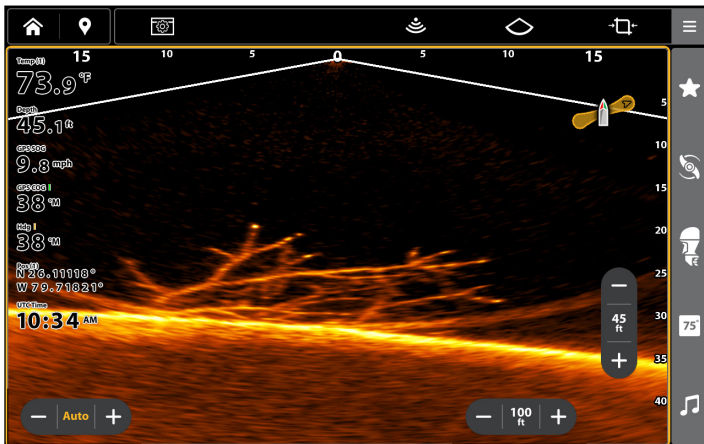
Your MEGA Live Mode [Down, Forward, Landscape] determines the Range options available in the X-Press Menu.

Turn On/Off Persistence

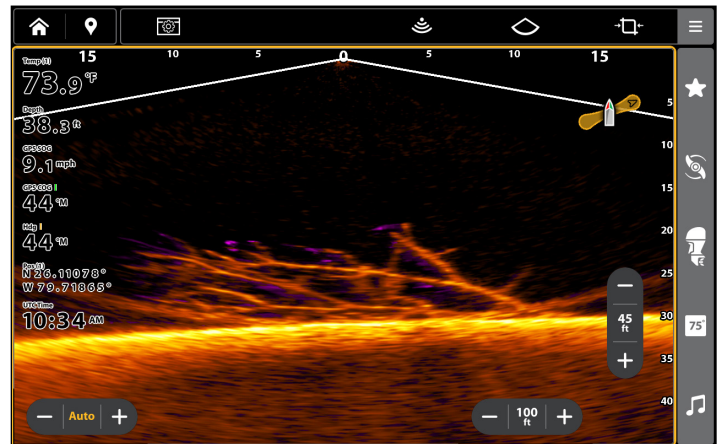
When Persistence is turned on, your sonar returns will include a history of where moving objects have been, shown as a “trail” of movement. Set Persistence to low for a shorter trail or to High for a longer trail.

1. **X-Press Menu:** With the MEGA Live 2 View displayed on-screen, press the MENU key once, or tap the Menu button on the top bar.
2. Select Settings.
3. Select Persistence.
4. Tap the On/Off button, or press the ENTER key, to turn it on/off.
5. If turned on, select a Persistence level [Low, Medium or High].

Persistence Off



Persistence On



Turn On/Off Overlays

Use the Overlays submenu to display or hide information on the view. In the MEGA Live 2 View, you can display the following: boat icon, range intervals, min/max range, range grid, and waypoints.

1. **X-Press Menu:** With the MEGA Live 2 View displayed on-screen, press the MENU key once, or tap the Menu button on the top bar.
2. Select Settings.
3. Select Overlays.
4. Tap the menu, or use the Cursor pad/Joystick to select an item, and add a check mark [check mark = visible, blank = hidden].
5. **Close:** Tap the X icon.

Zoom In/Out

The +/- [ZOOM] keys allow you to zoom in and out of a selected area based on the cursor position.

Activate the Cursor

1. Tap a position on the MEGA Live 2 View.

OR

Move the Cursor pad/Joystick.

Zoom In/Out

1. **Zoom In:** Touch the screen with two fingers and move them apart [pinch out].
2. **Zoom Out:** Touch the screen with two fingers and move them together [pinch in].

OR

1. **Zoom In:** Press the +ZOOM key.
2. **Zoom Out:** Press the - ZOOM key.

MARK AND DISPLAY WAYPOINTS

You can mark a waypoint directly on your Humminbird screen.

NOTE

Waypoints can be marked in any mode, but they can only be displayed in Landscape Mode.

You can use the following navigation functions in a MEGA Live 2 View:

- Display Waypoints as they are marked on the view. Waypoints can be marked at the boat position or cursor position.
- In a MEGA Live 2/Chart Combo View, you can see where your boat is positioned in relation to a waypoint on the Chart View and in relation to underwater structure in the MEGA Live 2 View [see **MEGA Live 2 Imaging Views** for more information].

Mark a Waypoint

You can mark a waypoint at the boat position or the cursor position.

Mark a Waypoint at the Boat Position

1. Tap the Mark button in the top bar.
2. Select Waypoint.
3. Select a waypoint type and color.

OR

1. Press the MARK key twice.
2. Select a waypoint type and color.

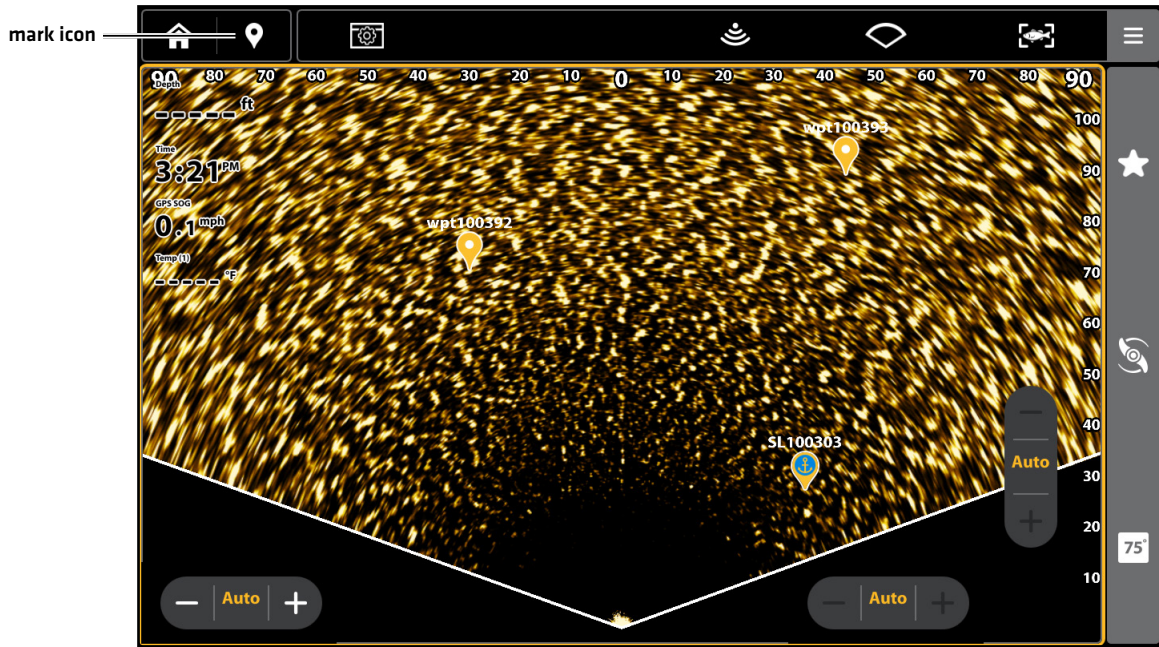
Mark a Waypoint at the Cursor Position

1. Press and hold a position on the MEGA Live 2 View.
2. Select Waypoint.
3. Select a waypoint type and color.

OR

1. Use the Cursor pad/Joystick to move the cursor to a position on the MEGA Live 2 View.
2. Press the MARK key twice.
3. Select a waypoint type and color.

MEGA Live 2 Waypoints in Landscape Mode



START AND STOP RECORDING

The Recording feature records active sonar information.

NOTE

A microSD or SD card must be installed in the fish finder to use the Recording features.

Start Recording

1. Press the HOME key.
2. Select Tools.
3. Select the Record tool.
4. Select Record, and set up the sonar recording:
Select Recording Sources, and select the beams to be recorded.
Select Save Location, and select an installed SD card.
5. Select Start Recording.

NOTE

Other sonar sources cannot be recorded at the same time as MEGA Live 2.

Stop Recording

1. Select Tools from the HOME screen.
2. Select the Record tool.
3. Under Record, select Stop Recording.

Play a Recording

1. Select Tools from the HOME screen.
2. Select the Record tool.
3. Tap the recording name, or use the Cursor pad/Joystick to select it.
4. Select Start.

Stop Playback

1. Select Tools from the HOME screen.
2. Select the Record tool.
3. Tap the recording name, or use the Cursor pad/Joystick to select it.
4. Select Stop.

Delete a Recording

1. Select Tools from the HOME screen.
2. Select the Record tool.
3. Press and hold the recording name.
4. Select Delete.

MEGA LIVE 2 TARGETLOCK

With a connected MEGA Live 2 Imaging TargetLock, you can control the movement of your transducer from your Humminbird fish finder, TargetLock foot pedal, or TargetLock remote. MEGA Live 2 Imaging TargetLock is independently mounted from the trolling motor shaft and provides full use of the motor.

Review the following table to understand the features available with your MEGA Live 2 TargetLock:

Feature	Requirements
Steering Left/Right	MEGA Live 2 Transducer connected to fish finder
TargetLock	Paired MEGA Live TargetLock heading sensor
Minn Kota Steer	Compatible trolling motor connected to fish finder
Home	Connected Humminbird or Minn Kota heading sensor
Sweep	Connected Humminbird or Minn Kota heading sensor

Set Up Your MEGA Live 2 Imaging TargetLock Devices

Pair the TargetLock Heading Sensor to the Fish Finder

Use the following instructions to pair the MEGA Live 2 Imaging TargetLock heading sensor to the Humminbird fish finder.

1. Press the HOME key.
2. Select Settings.
3. Select Sonar > TargetLock.
4. Select Pair Heading Sensor.
5. On your TargetLock Heading Sensor, press the Pair button.
6. The fish finder and the TargetLock Heading Sensor will go into Pairing Mode.

If 30 seconds pass while in Pairing Mode and they do not successfully pair, an error message will display signaling that the pairing has timed out. Repeat the procedure.

Pair the TargetLock Foot Pedal to the Fish Finder

Use the following instructions to pair the MEGA Live Imaging TargetLock foot pedal to the Humminbird fish finder.

1. Press the HOME key.
2. Select Settings.
3. Select Sonar > TargetLock.
4. Select Pair Foot Pedal.
5. On your foot pedal, press and hold the Left button and the Right button at the same time until the LEDs at the top of the pedal begin to scroll. Then release the buttons.
6. The fish finder and the foot pedal will go into Pairing Mode.

If 30 seconds pass while in Pairing Mode and they do not successfully pair, an error message will display signaling that the pairing has timed out. Repeat the procedure.

NOTE

After pairing completes, if the lights on the foot pedal blink in a scrolling pattern, this indicates that the fish finder is updating the foot pedal. When the software update is complete, the pairing process will need to be repeated.

Pair the TargetLock Remote to the Fish Finder

Use the following instructions to pair the MEGA Live Imaging TargetLock remote to the Humminbird fish finder.

1. Press the HOME key.
2. Select Settings.
3. Select Sonar > TargetLock.
4. Select Pair Remote.
5. On your remote, press and hold the LEFT and RIGHT ARROW keys at the same time until the LEDs at the bottom of the remote begin to scroll. Then release the buttons.
6. The fish finder and the remote will go into Pairing Mode.

If 30 seconds pass while in Pairing Mode and they do not successfully pair, an error message will display on your fish finder signaling that the pairing has timed out. Repeat the procedure.

NOTE

After pairing completes, if the lights on the remote blink in a scrolling pattern, this indicates that the fish finder is updating the remote. When the software update is complete, the pairing process will need to be repeated.

Review the TargetLock Device List

Use the TargetLock Device List to confirm that your TargetLock accessories are paired.

1. Press the HOME key.
2. Select Settings.
3. Select Sonar > TargetLock.
4. Select Device List.

Change the TargetLock GPS Source

The TargetLock GPS Source is used for TargetLock and marking waypoints.

NOTE

For best performance, the control head closest to the MEGA Live TargetLock should be selected as the TargetLock GPS source. See **Review Your Fish Finder's Serial Number** for more information.

1. Press the HOME key.
2. Select Settings.
3. Select Sonar > TargetLock.
4. Select GPS Source.
5. Tap to toggle Auto-Configure off.
6. Tap, or use the Cursor pad/Joystick and enter key, to select an option.

Review Your Fish Finder's Serial Number

Use the following instructions to check your fish finder's serial number.

1. Press the HOME key.
2. Select Settings > System > System Info.

Calibrate the TargetLock Heading Sensor

Use the following instructions to calibrate your MEGA Live Imaging TargetLock Heading Sensor. Before beginning calibration, your fish finder must be paired with your TargetLock Heading Sensor and your MEGA Live 2 Imaging transducer must be in the water and connected to your fish finder.

NOTE

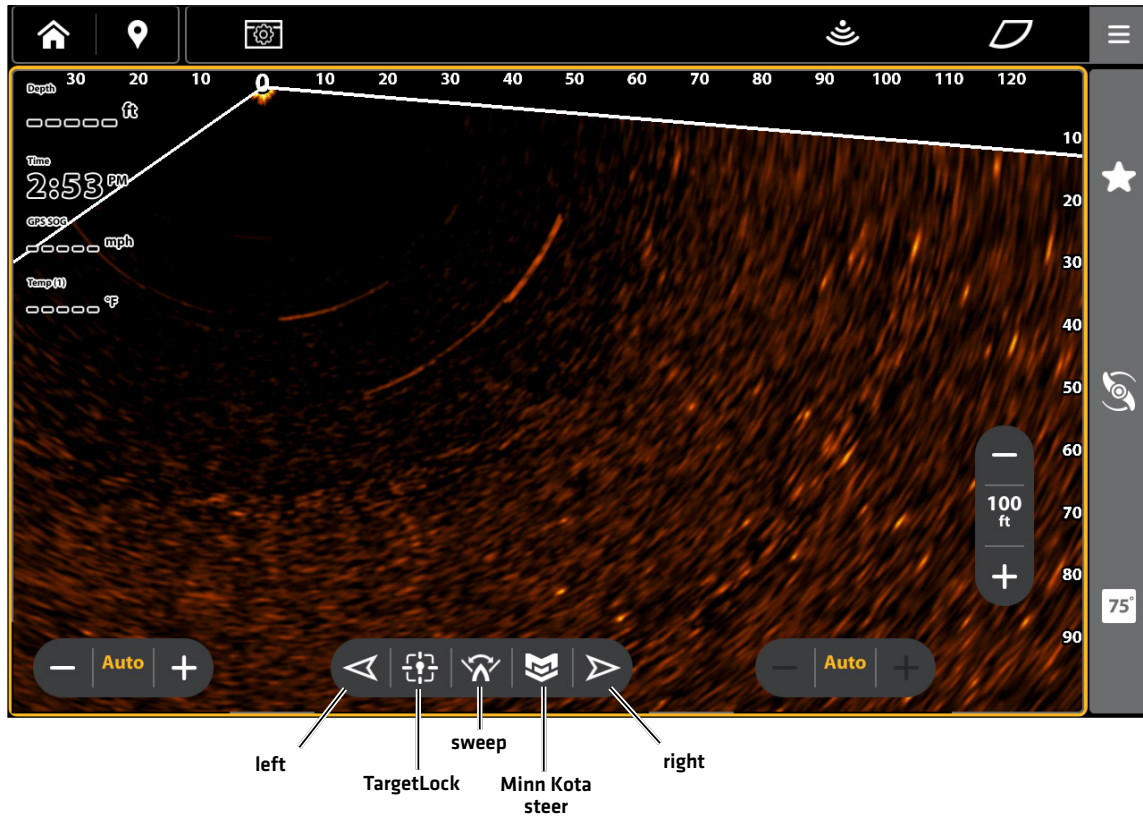
Your transducer will rotate during calibration. Ensure that your transducer cables can move freely before beginning this procedure. Your transducer will return to its original position when calibration is complete.

1. Press the HOME key.
2. Select Settings.
3. Select Sonar > TargetLock.
4. Select Calibrate Heading Sensor.
5. Your MEGA Live TargetLock will begin calibration. A message will display on your fish finder when calibration is complete.

What's on the MEGA Live Imaging TargetLock Display

MEGA Live Imaging TargetLock enables additional MEGA Live Features on your fish finder, including transducer controls overlaid on the MEGA Live Views.

MEGA Live View with TargetLock



Left/Right	Use the left and right arrows to rotate your transducer to the left or right.
TargetLock	Use TargetLock to fix the MEGA Live 2 beam in the direction of fish or structure. Your transducer will automatically adjust to keep your target in view.
Sweep	Use Sweep to rotate your transducer from side to side 120 degrees.
Minn Kota Steer	Use Minn Kota Steer to control both your trolling motor and your MEGA Live 2 transducer at the same time [requires a compatible trolling motor].

NOTE

You must have a Humminbird GPS Heading Sensor or Minn Kota Heading Sensor with Advanced GPS Navigation connected to your fish finder in order to enable the Home and Sweep features. To purchase accessories for your fish finder, visit our Web site at humminbird.johnsonoutdoors.com or contact Humminbird Technical Support through our Help Center at <https://humminbird-help.johnsonoutdoors.com/hc/en-us>.

Steer Left or Right

Use the left and right arrows to rotate your transducer to the left or right.

1. With a MEGA Live 2 Imaging View on-screen, press and hold the left or right arrow key to rotate your transducer.
- OR**
2. Press and hold the left or right arrow key on your foot pedal or remote.

Turn On/Off TargetLock

Use TargetLock to fix the MEGA Live beam in the direction of fish or structure. Your transducer will automatically adjust to keep your target in view.

NOTE

For best performance, the fish or structure you are targeting should be at a distance of 2/3 your MEGA Live Forward range.

1. With a MEGA Live 2 Imaging View on-screen, aim your transducer beam at the fish or structure you want to target.
2. Tap the TargetLock icon.

OR

Press the TargetLock key on your remote or foot pedal.

3. Tap the TargetLock icon again or tap any other MEGA Live 2 TargetLock control to cancel TargetLock.

QUICK TIP! With an active cursor, TargetLock can also be enabled by pressing TargetLock in the top bar.

Turn On/Off Sweep

Use Sweep to rotate your transducer from side to side 120 degrees.

NOTE

To ensure proper function of Sweep, make sure that your Humminbird or Minn Kota Heading sensor is mounted in a location away from magnetic interference.

1. With a MEGA Live 2 Imaging View on-screen, tap the Sweep icon to start sweeping.
2. Tap the Sweep icon again or tap any other MEGA Live 2 TargetLock control to stop sweeping.

QUICK TIP! You can also turn Sweep on or off with your foot pedal or remote using the One Boat Network key. See *MEGA Live TargetLock: Customize your TargetLock Foot Pedal or Remote*.

Turn On/Off Minn Kota Steer

Use Minn Kota Steer to control both your trolling motor and your MEGA Live 2 transducer at the same time using your trolling motor remote or foot pedal [requires a compatible trolling motor]. When you enable Minn Kota Steer, your transducer will rotate to point the same direction as your trolling motor.

1. With a MEGA Live 2 Imaging View on-screen, tap the Minn Kota Steer icon to start Minn Kota Steer.
2. Tap the Minn Kota Steer icon again or tap any other MEGA Live 2 TargetLock control to stop Minn Kota Steer.

QUICK TIP! You can also turn Minn Kota Steer on or off with your foot pedal or remote using the One Boat Network key. See *MEGA Live 2 TargetLock: Customize your TargetLock Foot Pedal or Remote*.

Customize Your TargetLock Foot Pedal or Remote

The One Boat Network button on your MEGA Live 2 TargetLock Remote and/or Foot Pedal is customizable. It can be programmed to return your transducer to the home position, mark waypoints, enable/disable pinging, sweep your transducer, or enable Minn Kota Steer.

1. Press the HOME key.
2. Select Settings.
3. Select Sonar > TargetLock.
4. Under One-Boat Network Button, select Foot Pedal or Remote.
5. Tap, or use the Cursor pad/Joystick and ENTER key, to select an option.

Home Position	Press the One Boat Network key to return your transducer to its home position.
Mark Waypoint	Press the One Boat Network key to mark waypoints at the boat or cursor position. Waypoints can be marked in any MEGA Live 2 mode but can only be displayed in Landscape Mode [See Mark and Display Waypoints for more information.]
Disable Pinging	Press the One Boat Network key to start or stop pinging.
Sweep	Press the One Boat Network key to begin sweeping. Press the sweep key again or press any other key to stop sweeping.
Minn Kota Steer	Press the One Boat Network key to control both your trolling motor and your MEGA Live 2 transducer at the same time [requires a compatible trolling motor].

POWER OFF

1. Power Off the Fish Finder

Press and hold the POWER key.

CAUTION

Turning off the fish finder will NOT power off the MEGA Live 2 Imaging transducer.

2. Power Off the Transducer

Turn off power on the main switch, breaker, or battery switch.

NOTE

Powering off the MEGA Live 2 Imaging transducer will be determined by the installation and power connection on your boat.

3. Check the MEGA Live 2 Trolling Motor Mount

Check the tension of the trolling motor bracket after initial use and periodically thereafter to ensure that the installation remains stable. See your installation guide for details.

CONTACT HUMMINBIRD

Any questions relating to the product should be directed to our Help Center at <https://humminbird-help.johnsonoutdoors.com/hc/en-us> or in writing to the address below:

Humminbird Service Department
678 Humminbird Lane
Eufaula AL 36027 USA

Social Media Resources:



[Facebook.com/HumminbirdElectronics](https://www.facebook.com/HumminbirdElectronics)



[X.com \(@humminbirdfish\)](https://www.x.com/@humminbirdfish)



[Instagram.com/humminbirdfishing](https://www.instagram.com/humminbirdfishing)



[YouTube.com/humminbirdtv](https://www.youtube.com/humminbirdtv)

