

# LAKEMASTER<sup>®</sup>

## QUICK START GUIDE

532790-1AU\_A

## INTRODUCTION


Humminbird<sup>®</sup> LakeMaster<sup>®</sup> map cards are compatible with **HELIX<sup>®</sup> G3/ G3N and G4/G4N** control heads with chartplotting capabilities and **all APEX<sup>™</sup> and SOLIX<sup>®</sup>** control heads. To review the latest compatibility information and to download a detailed LakeMaster Map Card user guide, visit our Web site at [humminbird.johnsonoutdoors.com](http://humminbird.johnsonoutdoors.com).

This quick start guide and the LakeMaster user guide contain instructions that apply to your Humminbird control head(s) as follows:

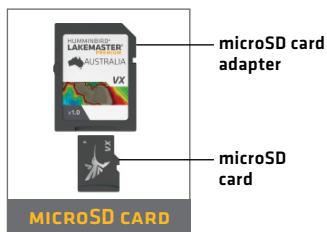
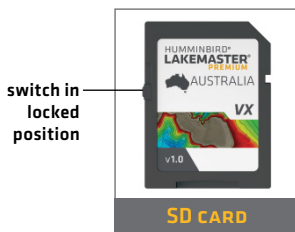
- APEX Series
- SOLIX Series
- HELIX Series

### ► HUMMINBIRD LAKEMASTER MAP CARDS

Your control head is compatible with either an SD card or a microSD card. It is important to note the following guidelines:

 **WARNING!** Do NOT delete or change the contents of your map card. Changing the card will permanently damage it.

- Confirm the map card is locked [see the illustrations below].
- Do not force the card into the slot. The card should click easily into place.
- **Do not leave the card slot cover open.** Close the slot cover to prevent water damage to the unit.



# GETTING STARTED

---

## ➤ POWER ON

1. Press the POWER key.
2. Choose your startup mode. If you are **on the water with GPS reception**, select Normal mode. If you are **off the water without GPS reception**, select Simulator mode.

## ➤ CHECK THE CURRENT SOFTWARE VERSION

It is important to install the latest software update to enable the Humminbird LakeMaster map card on your control head.

**LakeMaster** requires the following software versions:

**APEX and SOLIX:** 4.190 and later

**HELIX:** 2.890 and later

To download the latest software, go to our Web site at **humminbird.johnsonoutdoors.com** and click Support > Software updates. For complete details about the software update process, see your control head manual.

## ➤ UPDATE THE BASEMAP (HELIX ONLY)

LakeMaster requires the following basemap versions to operate on HELIX control heads:

**HELIX 7 and 8:** 2.010 [released 07/2020] and later

**All other compatible HELIX models:** 1.031 [released 07/2020] and later

To download the latest software, go to our Web site at **humminbird.johnsonoutdoors.com** and click Support > Software updates. For complete details about the software update process, see your control head manual.

## ➤ OPEN CHART VIEW

### **APEX/SOLIX:**

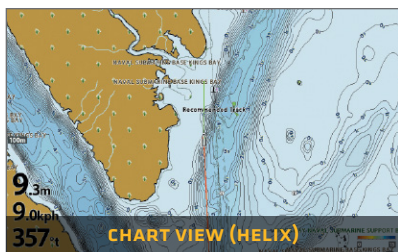
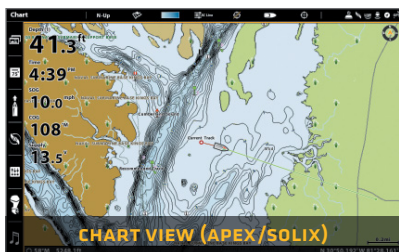
1. Press the HOME key.
2. Select Chart View from the Favorites bar.

### **HELIX:**

1. Press the VIEW key until Chart View is displayed on-screen.

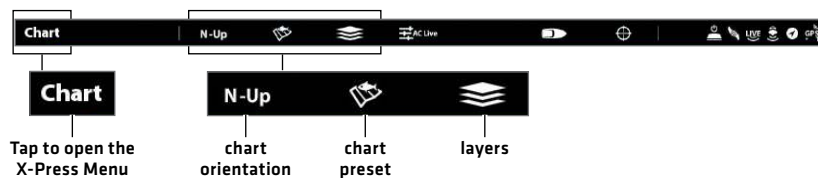
**OR**

Press and hold the VIEW key to open the Views X-Press Menu. Select Chart > Chart View.



## ➤ USING THE STATUS BAR (APEX AND SOLIX ONLY)

The status bar is located at the top of the screen. It changes to match the on-screen view and active map card. You can tap the icons in the status bar to open and close a menu or make a selection.



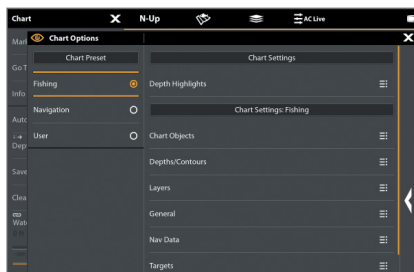
## ➤ SELECT CHART PRESET

Use Chart Presets to quickly alternate between settings. You can use the default Fishing or Navigation settings provided, or you can create a custom User preset with your preferences. The Fishing and Navigation presets are also fully customizable. You can restore each preset back to its default settings at any time.

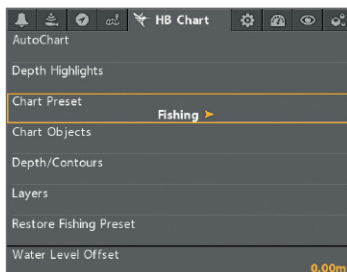
**APEX/SOLIX:** Chart X-Press Menu > Chart Options > Chart Preset

**HELIX:** Main Menu > HB Chart tab > Chart Preset

### APEX/SOLIX



### HELIX



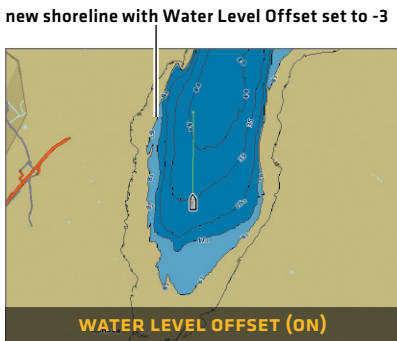
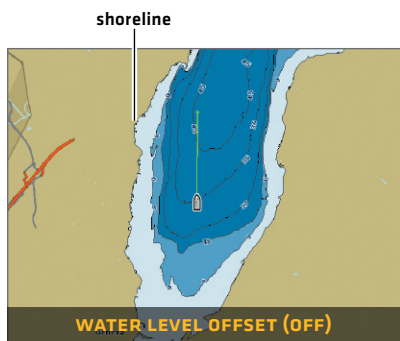
## ➤ SET THE WATER LEVEL OFFSET

It is important to note if the water level is higher or lower than normal for the selected lake. For example, if the water level is down 3 feet, set the Water Level Offset to -3. Depth labels on the Contour Lines will adjust based on the Water Level Offset setting.

- If the water level is higher than normal, set a positive amount.
- If the water level is lower than normal, set a negative amount.
- If the water level has not changed [normal]: For APEX and SOLIX, turn Water Level Offset off. For HELIX, set the Water Level Offset to 0.

**APEX/SOLIX:** Home > Settings > Chart > Water Level Offset

**HELIX:** Main Menu > HB Chart tab > Water Level Offset



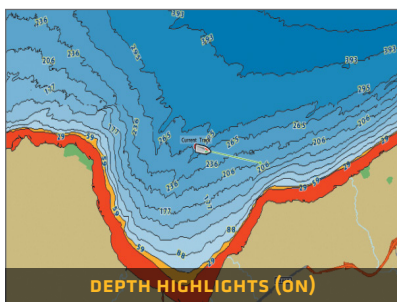
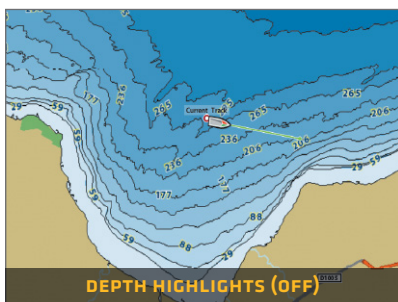
## ➤ SET DEPTH HIGHLIGHTS

Highlight deep and shallow waters in Chart View and Chart Combo Views using the following LakeMaster features. Highlight colors are customizable.

- **Depth Highlights** allow you to select up to four depth ranges to be highlighted on the chart.
- **Shallow Water Highlight** identifies shallow waters when the depth is equal to or less than the level you set.

**APEX/SOLIX:** Chart X-Press Menu > Chart Options > Depth Highlights

**HELIX:** Main Menu > HB Chart tab > Depth Highlights



## ➤ SET SAFE DEPTH LEVEL

Use the Safe Depth feature to set the minimum depth level for your vessel and to turn on highlights for hazards shallower than that level.

**APEX/SOLIX:** Home > Settings > Chart > Safe Depth

**HELIX:** Main Menu > HB Chart tab > Safe Depth

## ➤ SHOW/HIDE SPOT SOUNDINGS

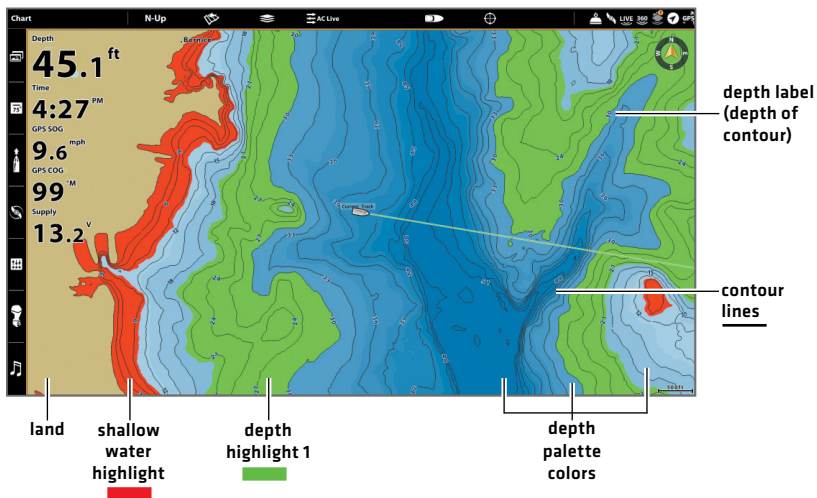
Spot Soundings are depth measurements shown on the chart.

**APEX/SOLIX:** Chart X-Press Menu > Chart Options > Chart Objects > Navigation > Spot Soundings

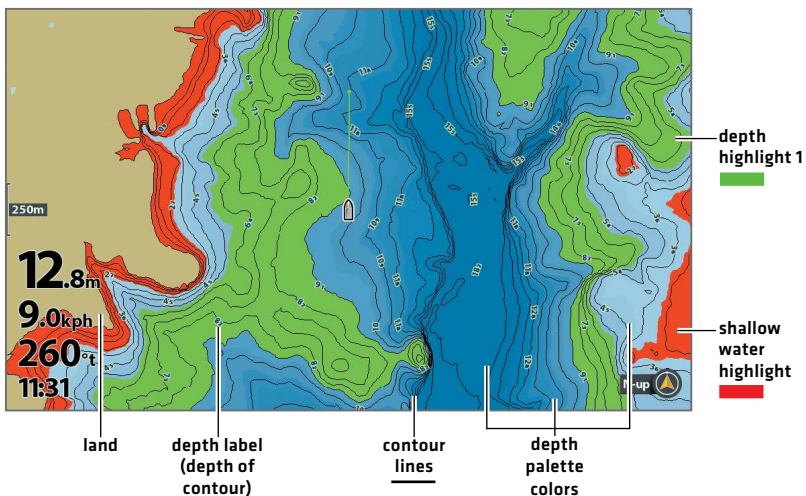
**HELIX:** Main Menu > HB Chart tab > Chart Objects > Spot Soundings

# LAKEMASTER IN CHART VIEW

## > APEX/SOLIX



## > HELIX



# TIPS FOR USING THE MAP

---

## > MOVE ACROSS THE CHART

### APEX/SOLIX



Move the joystick.

### HELIX



Press any arrow on the 4-Way Cursor Control key.

## > SEE MORE ON THE CHART



Zoom in [+] and Zoom out [-] to see more of the chart display [contour lines, depth colors, etc.].

## > VIEW MAP INFORMATION



Move the cursor to an icon [buoy, marker, etc.], contour line, or position on the chart, and press the CHECK/INFO key. If you have an APEX or SOLIX control head, press the CHECK/INFO key a second time or select Map Info from the Info Menu.

## > SEARCH YOUR MAP (APEX AND SOLIX ONLY)

Search the area for the nearest waypoints, routes, and tracks.

1. From the Chart X-Press Menu, select Info.
2. Select Find Nearest.
3. Select an item from the displayed list.

## > DISPLAY OR HIDE CONTOUR LINES

Hide Contour Lines to see more details on the chart.

**APEX/SOLIX:** Chart X-Press Menu > Chart Options > Depth/Contours

**HELIX:** Main Menu > HB Chart tab > Depth/Contours

## > CHANGE THE CHART ORIENTATION

Select your display preference: North-Up, Head-Up, Course-Up, etc.

**APEX/SOLIX:** Chart X-Press Menu > Chart Options > General > Orientation

**HELIX:** Main Menu > Chart tab > Chart Orientation

# ADVANCED LAKEMASTER FEATURES

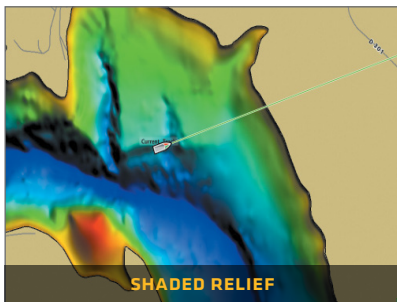
## ➤ LAKEMASTER PREMIUM: CHANGE LAYERS

Your LakeMaster Premium map card can display layers that show aerial imagery or shaded relief in Chart View and Chart Combo Views. The transparency of these layers is customizable.

- **Aerial Imagery** can be applied to land only or to both land and water.
- **Shaded Relief** uses shadows to show features of the seafloor.

**APEX/SOLIX:** Chart X-Press Menu > Chart Options > Layers

**HELIX:** Main Menu > HB Chart tab > Layers



## ➤ AUTOCHART® ZERO LINES

Download the AutoChart ZeroLines Accessory Manual from our Web site at [humminbird.johnsonoutdoors.com](http://humminbird.johnsonoutdoors.com).



# TROUBLESHOOTING

---

## ➤ **The map is not displayed in Chart View.**

1. Confirm GPS reception.
2. Confirm the control head software is up to date.
3. Confirm compatibility on our Web site at [humminbird.johnsonoutdoors.com](http://humminbird.johnsonoutdoors.com).

## ➤ **How can I view maps on my control head when I am not on the water?**

1. Power on the control head. Select Start Simulation [APEX/SOLIX] or Simulator [HELIX]. Open a chart view and move the cursor to your desired position on the chart.

**APEX/SOLIX:** Chart X-Press Menu > Set Simulation Position

**HELIX:** Main Menu > Chart Menu Tab > Set Simulation Position

## ➤ **Can I view the Humminbird LakeMaster map card on my computer?**

No, the Humminbird LakeMaster map card is not compatible with your computer. It is only compatible with your Humminbird control head. Installing the Humminbird LakeMaster map card in a computer could corrupt the map files.

## ➤ **The map displays, but seems to redraw slowly as you move across the water.**

1. Press the ZOOM [-] key to zoom out of the Chart View.
2. Confirm the control head software is up to date.

## ➤ **For additional questions, see the FAQ page at [humminbird.johnsonoutdoors.com](http://humminbird.johnsonoutdoors.com) or contact Humminbird Technical Support through our Help Center at <https://humminbird-help.johnsonoutdoors.com/hc/en-us>.**

# WARRANTY

---

## ➤ PRODUCT WARRANTY & RETURN POLICY

Johnson Outdoors warrants this product against defects in material and workmanship for 1 year from the date of purchase. Defects in materials or workmanship that occur within 1 year of purchase, substantiated by a sales receipt, will either be repaired or replaced without charge at Johnson Outdoors' discretion. THIS REPAIR OR REPLACEMENT IS THE EXCLUSIVE REMEDY AVAILABLE FOR ANY DEFECT CONCERNING THE PRODUCT OR FOR ANY LOSS OR DAMAGE RESULTING FROM ANY OTHER CAUSE WHATSOEVER. JOHNSON OUTDOORS WILL NOT UNDER ANY CIRCUMSTANCES BE LIABLE TO ANYONE FOR ANY SPECIAL, CONSEQUENTIAL, INCIDENTAL OR OTHER INDIRECT DAMAGES OF ANY KIND.

This warranty does not apply when: 1. the product has been altered, adjusted or handled in a manner other than in accordance with the instructions furnished with this product: 2. any defect, problem, loss or damage has resulted from any misuse, negligence or carelessness.

## ➤ RETURN OF DEFECTIVE PRODUCT

If you purchased this product in Australia or New Zealand, please return to the retailer from whom you purchased it, or directly to BLA. Returned products must have a Return Authorization (RA) number clearly displayed on the outside of the package. Contact BLA customer service by calling **1300 252 725** or by emailing [service@bla.com.au](mailto:service@bla.com.au) within 14 days of purchase to obtain an RA. When you return the product, include a valid sales receipt, a return address and a phone or email contact information. The RA is valid for 30 days from date issued. Product should be returned to: **BLA, 131 Rivergate PI Murarrie, Queensland, 4172, Australia.**

Johnson Outdoors reserves the right to examine the product when we receive it to determine if the defect or malfunction is due to a defect in materials or workmanship. Johnson Outdoors will duplicate the original data on all repaired or replaced products. Products that are defective due to any other cause will not be repaired or replaced. Damaged products, not covered by or that are out of warranty may be eligible for repair for a service fee, contact Johnson Outdoors for more information. **WARNING:** Never format a Humminbird SD card. Formatting the card will permanently erase the map data. Never use a Humminbird SD card to store or transfer data as this may damage the card.

# WARNINGS

---



**WARNING!** The electronic chart in your Humminbird unit is an aid to navigation designed to facilitate the use of authorized government charts, not to replace them. Only official government charts and notices to mariners contain all of the current information needed for the safety of navigation, and the captain is responsible for their prudent use.



**WARNING!** Do NOT save data files (waypoints, routes, tracks, groups, recordings, etc.) to your map card. Saving data to your map card will permanently damage it. You can save navigation data to the control head and export it to a blank card. Download the LakeMaster Map Cards User Guide from our Web site at [humminbird.johnsonoutdoors.com](https://humminbird.johnsonoutdoors.com) for more details.



**WARNING!** Do NOT delete or change the contents of your map card. Changing the card will permanently damage it.



**NOTE:** To purchase accessories for your control head, visit our Web site at [humminbird.johnsonoutdoors.com](https://humminbird.johnsonoutdoors.com) or contact Humminbird Technical Support through our Help Center at <https://humminbird-help.johnsonoutdoors.com/hc/en-us>.

APEX™, AutoChart®, LakeMaster®, HELIX®, Humminbird®, and SOLIX® are trademarked by or registered trademarks of Johnson Outdoors Marine Electronics, Inc.

Adobe, Acrobat, Adobe PDF, and Reader are either registered trademarks or trademarks of Adobe Systems Incorporated in the United States and/or other countries.

microSD is a trademark or registered trademark of SD-3C, LLC in the United States, other countries or both.

# CONTACT HUMMINBIRD

---

Contact Humminbird Technical Support through our Help Center at <https://humminbird-help.johnsonoutdoors.com/hc/en-us> or by writing to the address below:

**Humminbird Service Department**  
**678 Humminbird Lane**  
**Eufaula AL 36027 USA**

## Social Media Resources:



Facebook.com/HumminbirdElectronics



Twitter.com [@humminbirdfish]



Instagram.com/humminbirdfishing



YouTube.com/humminbirdtv

