



Your A1 is powered by a CR2450 battery

- Your A1 is powered by a non-rechargeable coin cell battery.
- Always check the battery level before each dive.
- If the battery warning appears, have the battery replaced.

WARNING!

When your A1's battery reaches the end of its lifetime, it is recommended to be replaced by an authorized SCUBAPRO service center.

To locate your nearest service center, visit <http://www.scubapro.com/where-to-buy>

Do not open your A1 or try to replace the battery yourself!

Opening the housing or the metal caseback of your A1 will void your warranty.

Changing the battery must be done with particular care in order to prevent water from seeping into the dive computer.

The A1's warranty does not cover damages due to the improper placement of the battery, or the incorrect closing of the caseback.



SCUBAPRO

A1 QUICK USE GUIDE



Initial activation: The A1 is delivered in deep sleep mode where the display is off.

You must activate the A1 with a press-and-hold of the bottom left (SEL/ESC) button before the first dive.

Initial activation requires basic set-up	Set Time > Settings, Watch, Set Time, +/UP or -/Down to Select Hours & Minutes			
	Set Date > Settings, Watch, Set Date, +/UP or -/Down to Select Month, Day & Year			
	Set Units > Settings, User, Units, +/UP or -/Down to Select Measurement Units			
	Set Time Format > Settings, Watch, Format, +/UP or -/Down to Select Time & Date Format			
	Display Design > Settings, Watch, Design, +/UP or -/Down to Select Time Display Design			
BUTTONS	Button Functions on the Surface			
	TOP LEFT BUTTON (Light)	TOP RIGHT BUTTON (+/UP)	BOTTOM RIGHT BUTTON (-/DOWN)	BOTTOM LEFT BUTTON (SEL/ESC)
Press The act of pressing and releasing one of the buttons	Backlight	Adds numerical values Toggles up to the previous menu	Subtracts numerical values Toggles down to the next menu	Access main menu and submenus Confirm selection / setting
Press-and-hold The act of pressing and holding one of the buttons for 1 second before release	N/A	From main time & date display: shows the selected Dive Mode From selected dive mode display: starts swim mode	From main time & date display: Shortcut to dive ready mode	Return to previous menu or cancel the setting From main time & date display when SCUBA mode selected: shows current gas settings
	Button Functions during Diving			
	Press The act of pressing and releasing one of the buttons	Backlight	Scrolls through dive displays	Scrolls through dive displays
	Press-and-hold The act of pressing and holding one of the buttons for 1 second before release	N/A	In "timer" display: stop / restart timer (SCUBA and GAUGE mode) Reset average depth counter (GAUGE mode)	Reset timer when stopped (SCUBA & GAUGE mode) In "surface interval" display: end Apnea exercise (APNEA mode)
				In "surface interval" display: end Apnea exercise (APNEA mode)

A1 Quick Use Guide

MAIN MENU

Navigate through the **Main Menu** with three easy-push buttons

BOTTOM RIGHT BUTTON
(Press to Scroll Down)

TOP RIGHT BUTTON
(Press to Scroll Up)

BOTTOM LEFT BUTTON
(Press to Enter Your Selection)

Dive Settings > Dive Mode Water Type MB-Level Display Type Warnings □

Apnea Settings > Total Exercise Surface Interval Factor Depth Dive Incremental Dive Interval □
Surface Interval Ascent Speed □

Warning Settings > Dive Time Depth MOD □

Clock Settings > Watch Alarm Time Zone Set Time Set Date Design Format □

User Settings > Backlight Duration Contrast Units Owner Info Desaturation Reset □
Service Info Software Version □

Swim Settings > Stroke Depth Stroke Length □

Sound Settings > Buzzer Button Beeps Dive Warnings □

Gas Settings > Set Gas PPO2 Max Nitrox Reset □

Sport > Stopwatch Swim Apnea □

Bluetooth > Ready Connect □

Altimeter > Altimeter Barometer Thermometer □

Dive Planner > No-Decompression Plan Decompression Plan □

Logbook > View Dive Logs Dive Statistics Dive Profile □

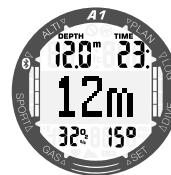
SELECT FROM TWO DIVE SCREEN OPTIONS — Light or Classic

(Go to Dive > Scuba > Display)

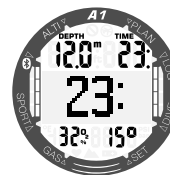
LIGHT SCREENS



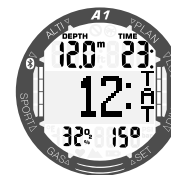
No-Stop Time



Current Depth

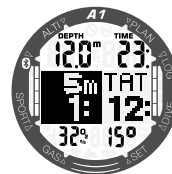


Elapsed Dive Time

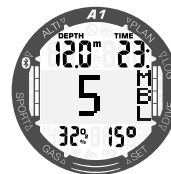


Total Ascent Time

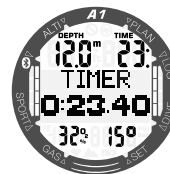
CLASSIC SCREENS



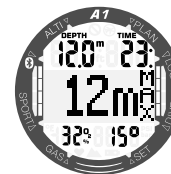
Decompression Stop



Current MB-Level



Timer



Maximum Depth During Current Dive

SOS SCREENS



Scuba Mode



Gauge Mode