

LAKEMASTER MAP CARDS

User Manual



TABLE OF CONTENTS

Overview	5	Display a Lake	22
Set up the Fish Finder.....	5	Follow the Contour.....	23
Set up for the Day	7	Export Navigation Data.....	26
What's on the Map.....	10	Contact Humminbird.....	27
Adjust the Map Display Settings.....	14		

532816-2EN_A

THANK YOU!

Thank you for choosing Humminbird®, the #1 name in marine electronics. Humminbird has built its reputation by designing and manufacturing top quality, thoroughly reliable marine equipment. Your Humminbird is designed for trouble-free use in even the harshest marine environment. We encourage you to read this manual carefully in order to get the full benefit from all the features and applications of your Humminbird product.

Contact Humminbird Technical Support through our Help Center at <https://humminbird-help.johnsonoutdoors.com/hc/en-us>.

CAUTION

This device should not be used as a navigational aid to prevent collision, grounding, boat damage, or personal injury. When the boat is moving, water depth may change too quickly to allow time for you to react. Always operate the boat at very slow speeds if you suspect shallow water or submerged objects.

The electronic chart in your Humminbird unit is an aid to navigation designed to facilitate the use of authorized government charts, not to replace them. Only official government charts and notices to mariners contain all of the current information needed for the safety of navigation, and the captain is responsible for their prudent use.

Do NOT save data files (waypoints, routes, tracks, groups, recordings, etc.) to your chart card. Saving data to your chart card will permanently damage it. You can save navigation data to the fish finder and export it to a blank card. See **Save and Export Navigation Data** for details.

Do NOT delete or change the contents of your chart card. Changing the card will permanently damage it.

Humminbird is not responsible for the loss of data files (waypoints, routes, tracks, groups, recordings, etc.) that may occur due to direct or indirect damage to the unit's hardware or software. It is important to back up your fish finder's data files periodically. Data files should also be saved to your computer before restoring the fish finder defaults or updating the software. Visit our Web site at humminbird.johnsonoutdoors.com and download your fish finder operations manual for details.

Disassembly and repair of this electronic unit should only be performed by authorized service personnel. Any modification of the serial number or attempt to repair the original equipment or accessories by unauthorized individuals will void the warranty.

NOTES

Do NOT leave the fish finder SD slot cover open. The slot cover should always be closed to prevent water damage to the unit.

Some features discussed in this manual require a separate purchase, and some features are only available on international models. Every effort has been made to clearly identify those features. Please read the manual carefully in order to understand the full capabilities of your model.

The illustrations in this manual may not look the same as your product, but your unit will function in a similar way.

To purchase accessories or any additional equipment for your configuration, visit our Web site at humminbird.johnsonoutdoors.com or contact Humminbird Technical Support at <https://humminbird-help.johnsonoutdoors.com/hc/en-us>.

The procedures and features described in this manual are subject to change without notice. This manual was written in English and may have been translated to another language. Humminbird is not responsible for incorrect translations or discrepancies between documents.


Product specifications and features are subject to change without notice.

Humminbird verifies maximum stated depth in saltwater conditions, however actual depth performance may vary due to transducer installation, water type, thermal layers, bottom composition, and slope.

ENVIRONMENTAL COMPLIANCE STATEMENT: It is the intention of Johnson Outdoors Marine Electronics, Inc. to be a responsible corporate citizen, operating in compliance with known and applicable environmental regulations, and a good neighbor in the communities where we make or sell our products.

WEEE DIRECTIVE: EU Directive 2002/96/EC “Waste of Electrical and Electronic Equipment Directive [WEEE]” impacts most distributors, sellers, and manufacturers of consumer electronics in the European Union. The WEEE Directive requires the producer of consumer electronics to take responsibility for the management of waste from their products to achieve environmentally responsible disposal during the product life cycle.

WEEE compliance may not be required in your location for electrical & electronic equipment (EEE), nor may it be required for EEE designed and intended as fixed or temporary installation in transportation vehicles such as automobiles, aircraft, and boats. In some European Union member states, these vehicles are considered outside of the scope of the Directive, and EEE for those applications can be considered excluded from the WEEE Directive requirement.

 This symbol [WEEE wheelee bin] on product indicates the product must not be disposed of with other household refuse. It must be disposed of and collected for recycling and recovery of waste EEE. Johnson Outdoors Marine Electronics, Inc. will mark all EEE products in accordance with the WEEE Directive. It is our goal to comply in the collection, treatment, recovery, and environmentally sound disposal of those products; however, these requirements do vary within European Union member states. For more information about where you should dispose of your waste equipment for recycling and recovery and/or your European Union member state requirements, please contact your dealer or distributor from which your product was purchased.

APEX™, Humminbird®, LakeMaster®, SOLIX®, and XPLORE™ are trademarked by or registered trademarks of Johnson Outdoors Marine Electronics, Inc.

Adobe, Acrobat, Adobe PDF, and Reader are either registered trademarks or trademarks of Adobe Systems Incorporated in the United States and/or other countries.

microSD is a trademark or registered trademark of SD-3C, LLC in the United States, other countries or both.

This product contains data from © IGN – under Open license – from geoservices.ign.fr.

OVERVIEW

Install a Humminbird LakeMaster® map card with VX Technology to add enhanced or high definition lake maps to your Humminbird fish finder. Humminbird LakeMaster Premium map cards with VX Technology allow you to add layers to your map that show aerial imagery [available for select lakes only] and shaded relief.

- **Compatibility:** Humminbird LakeMaster and LakeMaster Premium chart cards with VX Technology are available to use with **all APEX and XPLORE models and SOLIX G3 models**. Visit humminbird.johnsonoutdoors.com to review the latest compatibility information.


SET UP THE FISH FINDER

Use the following instructions to start using the latest LakeMaster features with your Humminbird fish finder.

1 | Update the Fish Finder Software

It is important to install the latest software update to enable the Humminbird LakeMaster chart card on your fish finder.

1. Check the Current Software Version

1. Press the HOME  key.
2. Select **Settings**.
3. Select **System**.
4. Select **System Info**.

Read the Software Version number. You must have software version 5.0 and later installed on your fish finder.

2. Update the Fish Finder Software

NOTES

If you have more than one fish finder on the network, go to each fish finder to install the latest software update. Fish finder software updates cannot be updated through another networked unit.

When you install the SD card with the software file into your fish finder, the fish finder will detect the update and provide an automatic prompt to install the software. You can follow the prompts or choose to install the software at a later time. See your fish finder operations manual for more information.

To ensure a smooth update process, keep the unit powered on until the update is fully completed. Interrupting the power supply during the update can result in system instability or data loss.

1. Install a formatted SD or microSD card into the computer card slot.
2. Go to humminbird.johnsonoutdoors.com, and click **Support > Software Updates**.
3. Click on your fish finder model. The available software updates are listed as downloads under each product. Confirm the file name is for your fish finder model.
 - Read the notices and instructions, and select **Download**.
 - Follow the on-screen prompts to save the software file to the SD or microSD card.
4. Power on your Humminbird fish finder. Start **Normal** mode.
5. Install the SD card with the software file[s] into the fish finder card slot.
6. Follow the on-screen prompts to update the fish finder software.
7. When the software update is complete, remove the SD or microSD card from the fish finder card slot.

2 | Insert the LakeMaster Map Card

CAUTION

Do NOT delete or change the contents of your chart card. Changing the card will permanently damage it.

Your fish finder is compatible with an SD card or a microSD card. To insert the chart card, follow the instructions included with your fish finder operations guide. Also, use the following guidelines:

- **Confirm the chart card is locked.** The switch should be pushed down.
- **Do not force the card into the slot.** The card should click easily into place. See your fish finder operations manual for instructions.
- **Do not leave the card slot cover open.** The slot cover should always be closed to prevent water damage to the unit.

Confirming the Map Card is Locked



SET UP FOR THE DAY

Use the following instructions to get started each time you go out on the water.

1 | Power On

1. Press the POWER key.
2. Choose your startup mode.

If you are on the water with GPS reception, select Normal mode. [Normal mode is required for on-the-water use.]

If you are off the water and don't have GPS reception, select Simulator mode.

2 | Display a Chart View

1. Press the HOME  key.
2. Select Chart from the Views Menu, and then select a Chart type.

OR

Select Chart View from the Favorites Menu.

Chart View from Views Menu

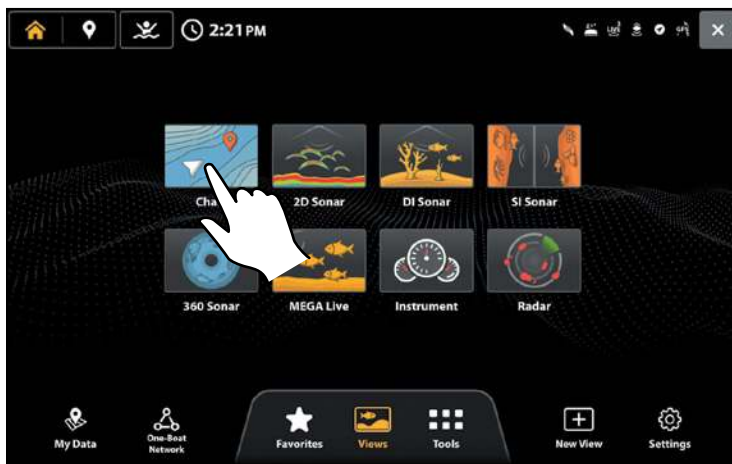
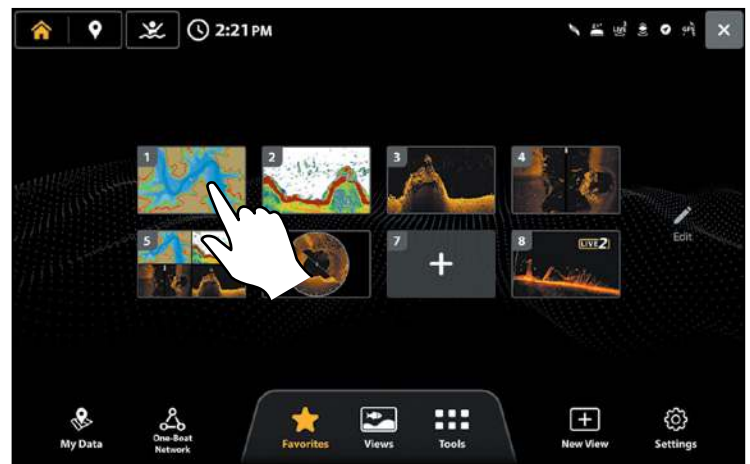


Chart View from Favorites Menu




The map displayed on the Chart View is based on your latitude/longitude position and the chart card installed in the fish finder, so your current position will be displayed automatically. GPS reception is required for the correct position to be displayed.

If your current position is not displayed, confirm you have GPS reception and that your LakeMaster Chart Card with VX technology is installed. Also, use the following instructions to review the Chart Source and Selected Chart Card.

Open the Chart XPress Menu

The X-Press Menu displays menu options for the on-screen view and operation mode [such as chart and navigation]. In a multi-pane view, the X-Press Menu options are determined by which pane is selected.

1. With a view displayed on-screen, tap the **Menu** icon  in the Top Bar.

OR

Press the MENU key.

Change the Chart Source

The fish finder will automatically select the LakeMaster VX card as the chart source. You can also change the map source using the Chart Settings. When you change the map source, the menu options for the Chart Views also change, allowing you to add navigation data, shading, alarms, and more.

1. From the Chart X-Press Menu, select **Settings**.
2. Under System Settings, select **Chart Source**.
3. Select **VX Chart Cards**.

Select a VX Chart Card

(for use with multiple VX chart cards)

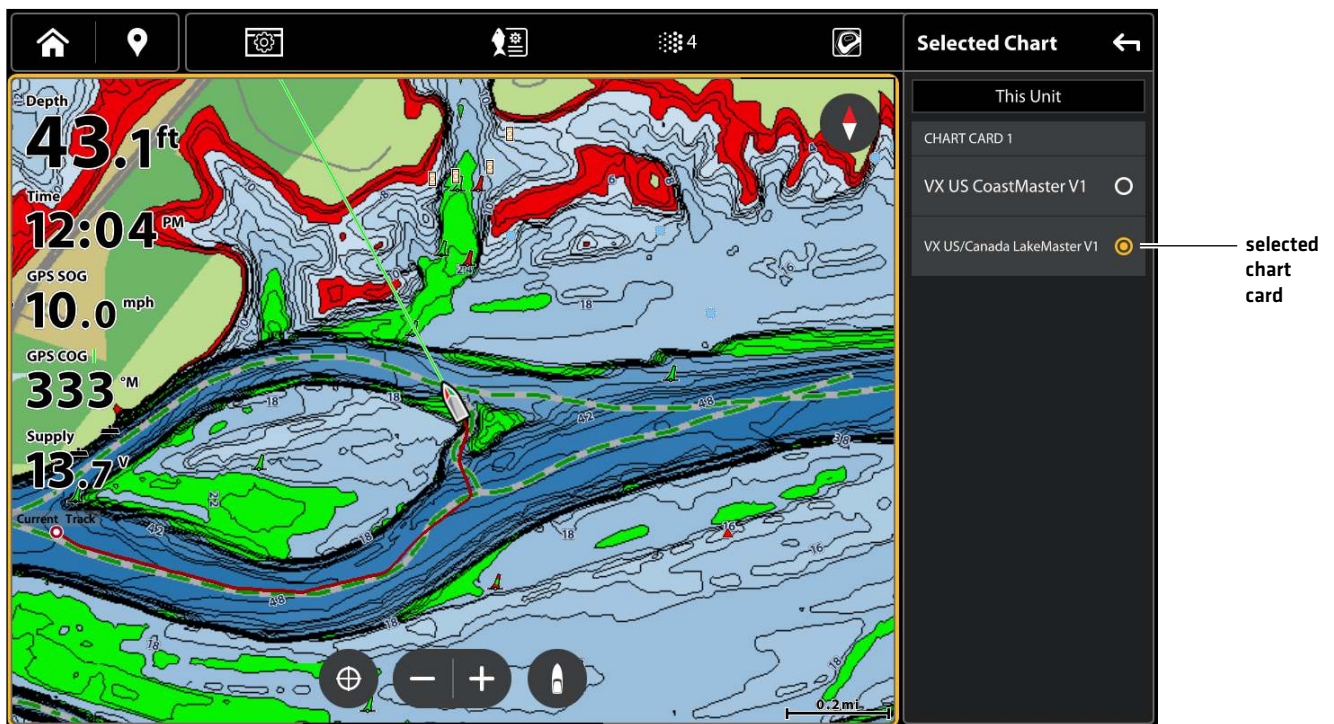
If you have more than one VX chart card in your fish finder or shared across the network, select which card you want to use.

NOTE

XPLORE fish finders come with LakeMaster VX and CoastMaster VX maps on one card. Use these instructions to switch between LakeMaster and CoastMaster.

1. From the Chart X-Press Menu, select **Selected Chart**.
2. Select the VX card you want to display.

Selecting a VX Chart



View Chart Card Info

Use the following steps to review the information about the installed Humminbird chart card.

1. From the Chart X-Press Menu, select **Settings**.
2. Under System Settings, select **Chart Source**.
3. Select **Humminbird: Chart Card Info**.

3 | Select a Chart Preset

Use Chart Presets to quickly alternate between settings. You can use the default Fishing or Navigation settings provided, or you can create a custom User preset with your preferences. The Fishing and Navigation presets are also fully customizable. You can restore each preset back to its default settings at any time.

1. With a Chart view displayed on-screen, tap the **Chart Preset** icon in the Top Bar.

OR

From the Chart X-Press Menu, select **Settings > Chart Preset**.

2. Select a preset.



Fishing Preset

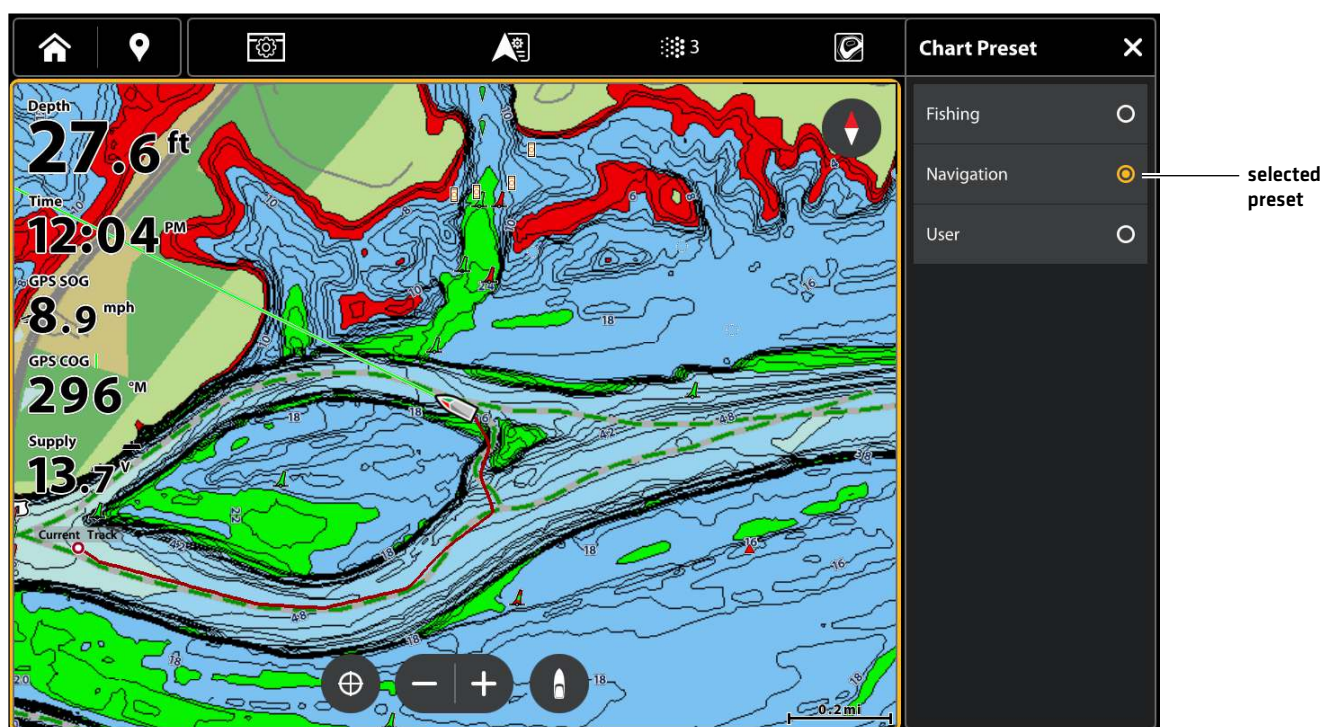


Navigation Preset



User Preset

Selecting a Chart Preset



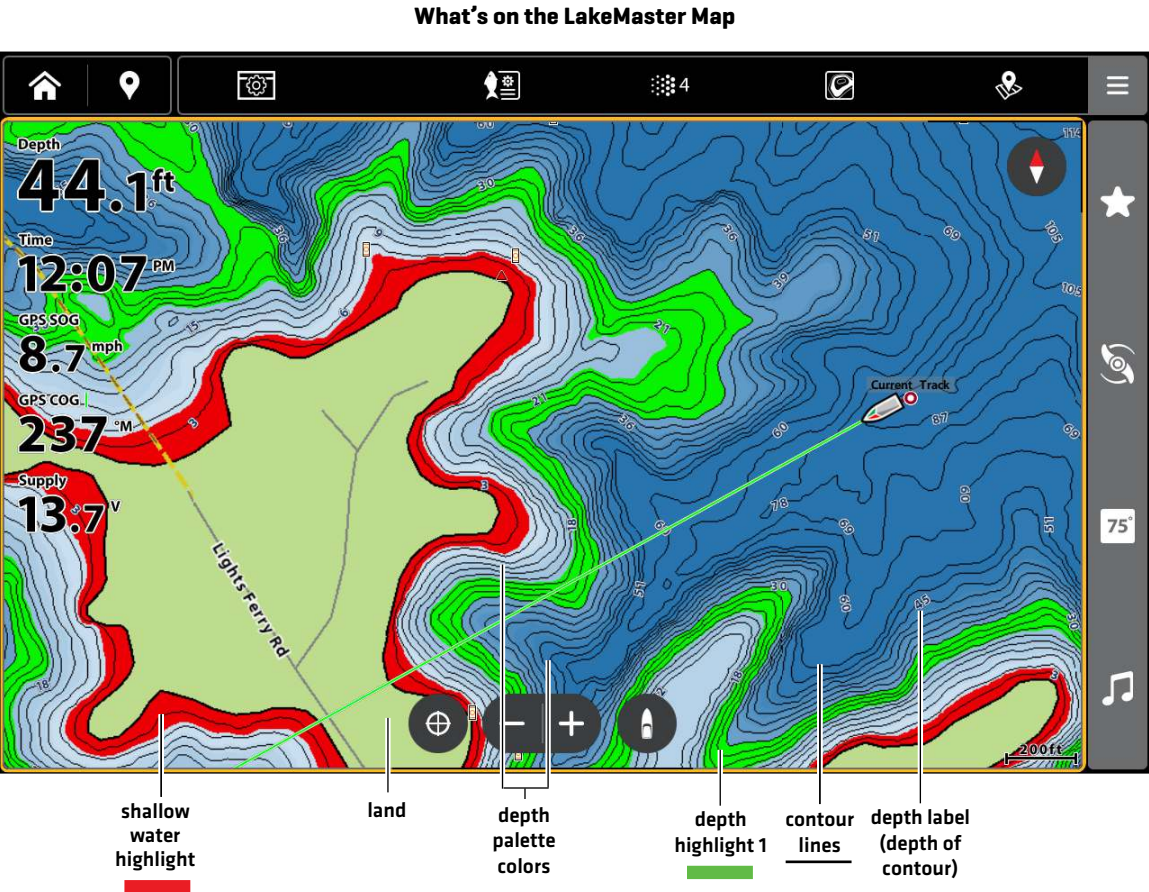
4 | Adjust the Water Level Offset

It is important to note if the water level is higher or lower than normal. For example, if the water level is down 3 feet, set the Water Level Offset to -3. Depth labels on the Contour Lines will adjust based on the Water Level Offset setting.

1. From the Chart X-Press Menu, select **Water Level Offset**.
Tap the **on/off** button, or press the ENTER key, to turn it on.
2. Tap the **+/-** icons, or press the **+/- ZOOM** keys, to adjust the setting.
 - If the water level is higher than normal, set a positive amount.
 - If the water level is lower than normal, set a negative amount.
 - If the water level has not changed [normal], turn the Water Level Offset off.

WHAT'S ON THE MAP

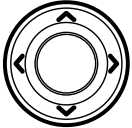
The installed LakeMaster Chart Card provides multiple colors and icons to help you identify depth, contours, and fish attractions on the map.



Tips for Using the Map


In addition to the chart and navigation features available with your Humminbird fish finder, use the following tips with your LakeMaster Chart Card.

XPLORE



Press any arrow on the CURSOR pad.

APEX/SOLIX






Move the Joystick.

Move Across the Chart

Press any arrow on the Cursor Pad [XPLORE] or move the Joystick [APEX/SOLIX] or to move the cursor across the chart.

Optional: Press the -ZOOM key repeatedly to zoom out.





See More on the Chart

Zoom in [+] and Zoom out [-] to see more of the chart display [contour lines, depth colors, etc.].

View Map Information

Move the cursor to an icon [buoy, marker, etc.], contour line, or position on the chart, and press the CHECK/INFO key.

Using the Top Bar

The Top Bar is located at the top of the screen. It changes to match the on-screen view. You can tap the icons in the Top Bar to open and close a menu or make a selection.



Change the Chart Orientation

Select your display preference: North-Up, Head-Up, Course-Up, etc.

1. From the Chart X-Press Menu, select **Settings**.
2. Select **General**.
3. Select **Orientation**.
4. Select an orientation to apply to the chart.

QUICK TIP! You can also select the Chart Orientation button on the Chart View screen. See the illustration below.



Head Up	The vessel's current heading points up, and the chart rotates around the vessel icon so that it always points up on the view. The heading is provided by the connected compass/heading sensor. If a compass is not connected, the vessel will be oriented according to the COG [Course Over Ground].
North Up	The chart is oriented with North up on the display, and the vessel rotates according to its heading or COG [Course Over Ground].
COG Up	The chart is displayed with the vessel oriented in a fixed position pointing up, and the chart rotates according to the vessel COG [Course over Ground].
Course Up	During navigation, the intended course or route leg is shown at the top of the view. Objects ahead of the vessel are drawn above the vessel. When the vessel is not navigating, the current heading is displayed.

Search Your Map



Search the area for ports, tide stations and current stations. You can also search for other points of interest, services, and the nearest waypoints, routes, and tracks.

1. From the Chart X-Press Menu, select **Info**.
2. Select **Find Nearest**.
3. Select an item from the displayed list.

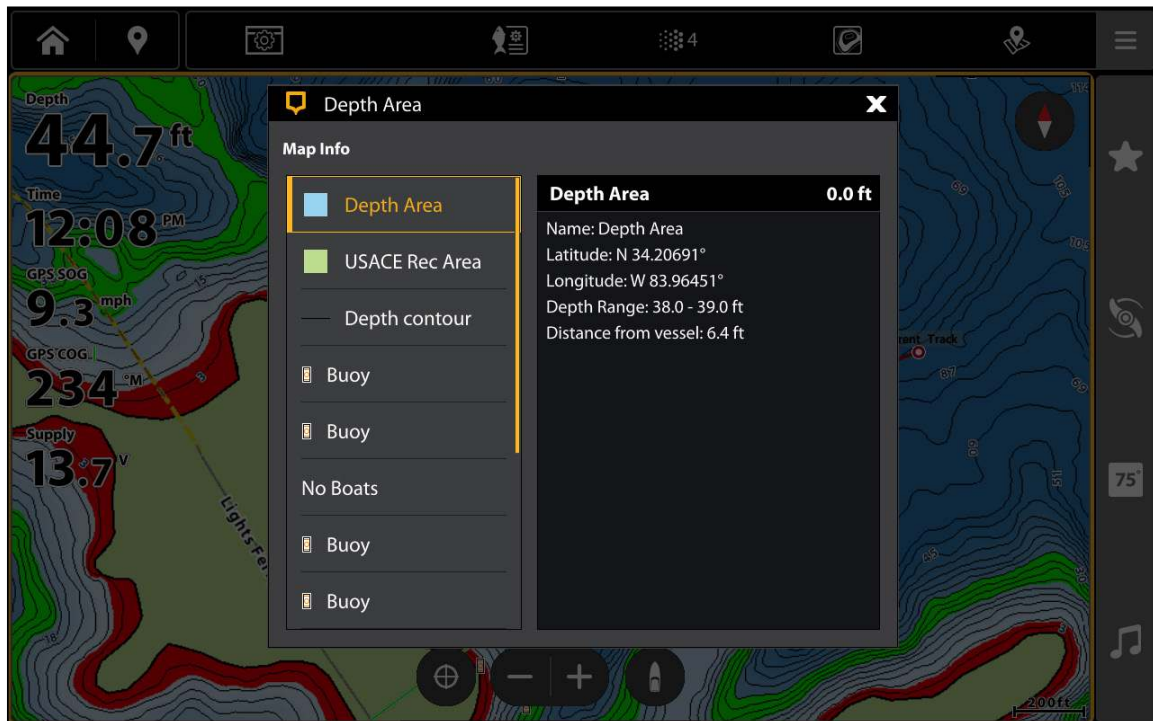
OR

1. Press the CHECK/INFO key.

OR

1. Tap a position on the Chart View to activate the cursor, or use the Cursor pad/Joystick to move the cursor to a position on the chart.
2. Tap the **More** icon  in the Cursor menu.
3. Select **Find Nearest** .
4. Choose an item from the displayed list. Tap the item, or press the ENTER key, to see more information if it is available.

Find Nearest Search Results



ADJUST THE MAP DISPLAY SETTINGS

When you install a LakeMaster Chart Card or LakeMaster Premium Chart Card, menu options are added to your fish finder. You can show or hide contour lines, highlight a depth range on the map, highlight shallow water, set safe depth levels and more.

Some of the menu options in this section may be displayed in other parts of the menu system so that you can access them quickly. No matter where you make the change, the fish finder will update the setting across the system.

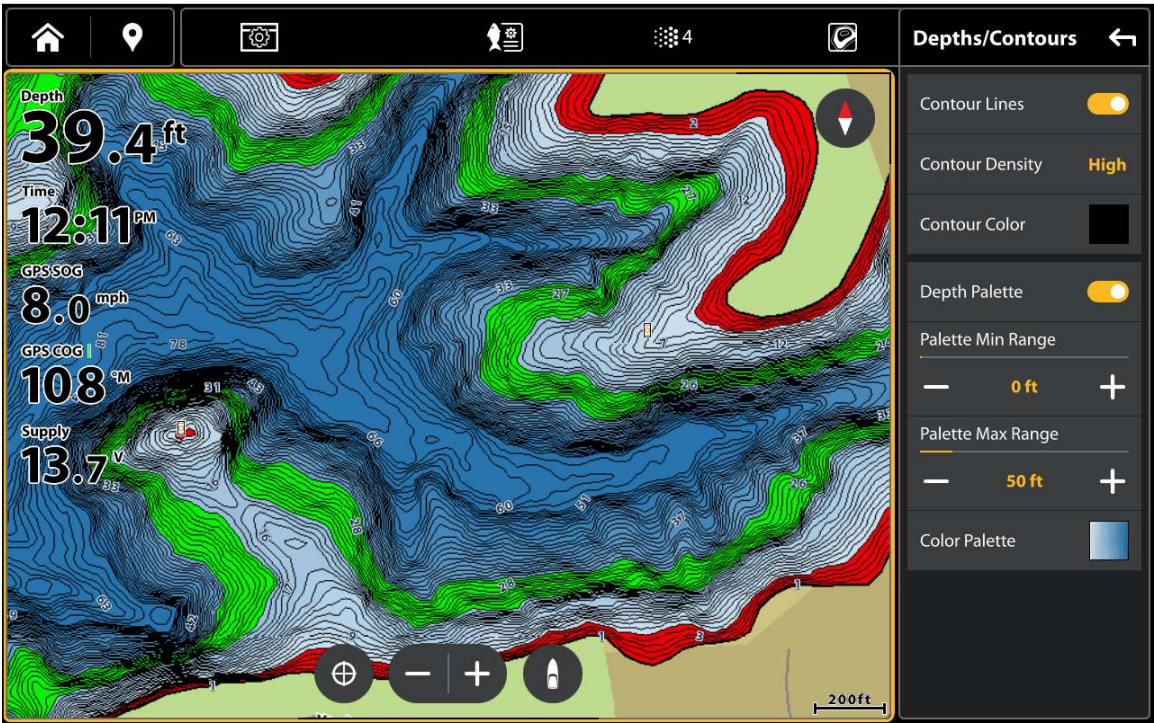
NOTE

With a few exceptions that are noted in this guide, changing a setting in the active preset will not affect that setting in the other presets.

Open the Depths/Contours Menu

- 1. From the Chart X-Press Menu, select **Settings**.
- 2. Select **Depths/Contours**.

Depths/Contours Menu



Display Contour Lines and Adjust the Contour Density

You can display or hide the contour lines on the map, and you can adjust the distance between each contour line.

Show/Hide Contour Lines

Show or hide water contour lines in Chart Views.

1. From the Depths/Contours Menu, select **Contour Lines**.
2. Tap the **on/off** button, or press the ENTER key, to show or hide contour lines.

Adjust the Contour Density

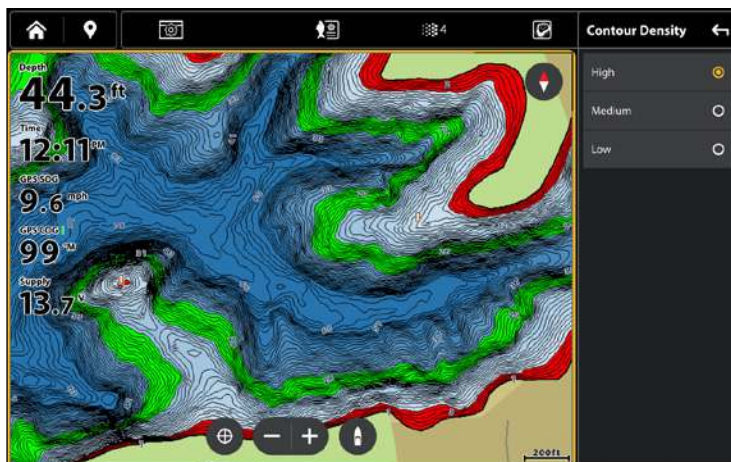
Use Contour Density to adjust the density of the contour lines displayed on the map. You can set the density to High, Medium, or Low. Contour lines must be turned on to adjust this feature.

NOTE

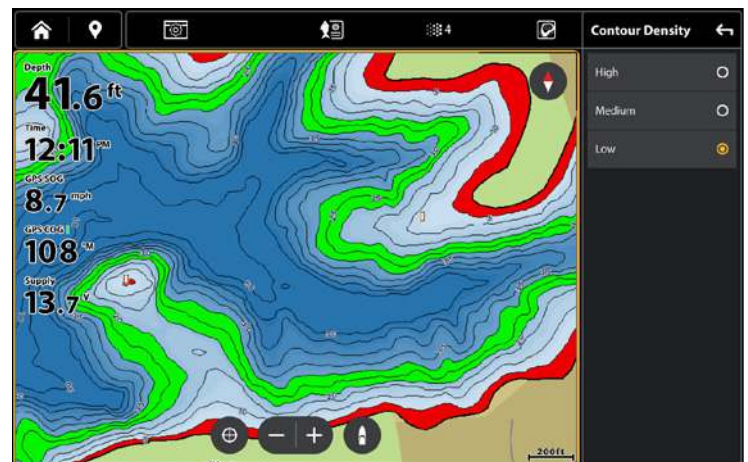
Contour density can only be customized in the Fishing and User presets. Navigation contour density cannot be changed.

1. From the Depths/Contours Menu, select **Contour Density** to open the submenu.
2. Select a Contour Density setting.

Adjusting the Contour Density (High)



Adjusting the Contour Density (Medium)



Change the Contour Lines Color

Contour lines must be turned on to adjust this setting.

1. From the Depths/Contours Menu, select **Contour Color** to open the submenu.
2. Select a color. Tap, or press the ENTER key, to turn it on.

Display Depth Palette Colors and Adjust the Palette Range

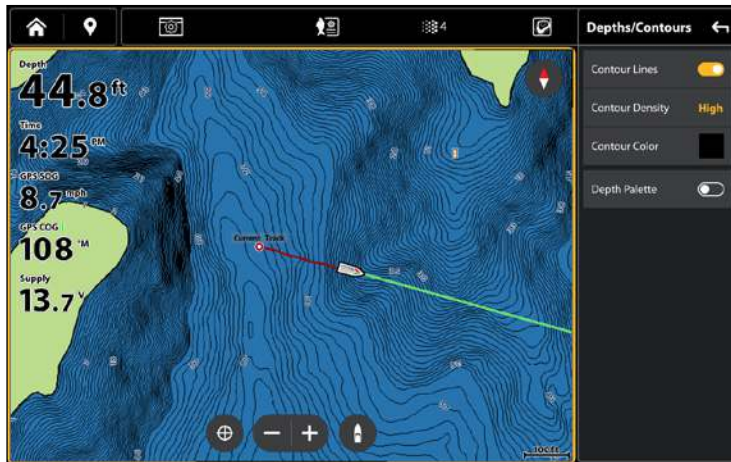
You can adjust the range of data shown on the chart by changing the minimum and maximum range on the display. The range you select affects how the depth colors are displayed. For related color options, see ***Change the Color Palette***.

Show/Hide Depth Palette Colors

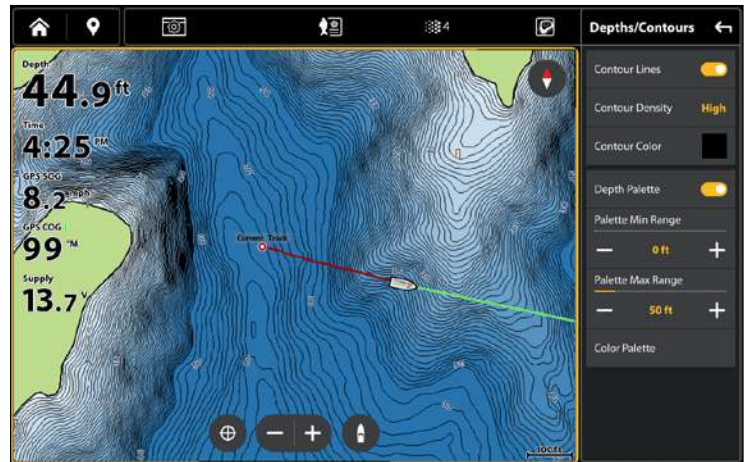
Turn depth area colors in the Chart Views Off or On.

1. From the Depths/Contours Menu, select **Depth Palette**.
2. Tap the **on/off** button, or press the ENTER key, to show or hide depth colors.

Depth Palettes OFF



Depth Palettes ON



Adjust the Palette Range


You can adjust the range of data shown on the chart by changing the minimum range and maximum range on the display. The range you select affects how the depth colors are displayed. For best results, set a narrow depth range threshold.

1. From the Depths/Contours Menu, select **Palette Min Range**.
2. Press and hold the slider, or press and hold the ENTER key, to adjust the setting.
3. Select **Palette Max Range**.
4. Press and hold the slider, or press and hold the ENTER key, to adjust the setting.

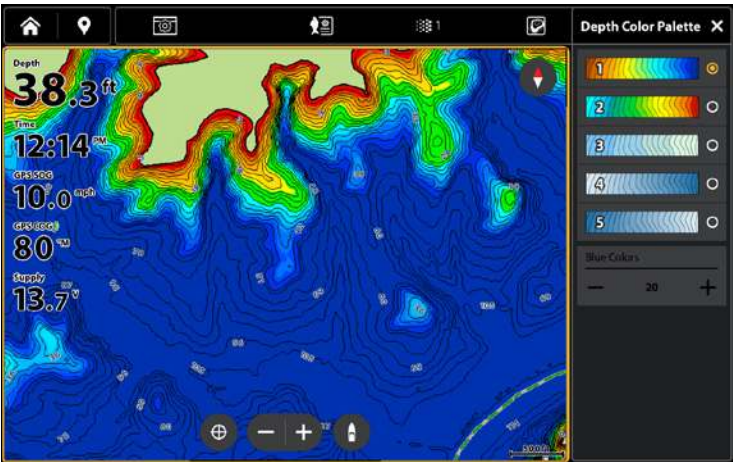
Change the Color Palette

The Color Palette menu changes the colors used to display the map.

1. From the Depths/Contours Menu, select **Color Palette**.
2. Select a color palette.
3. If you have selected a blue color palette, you can adjust the number of shades displayed. Select **Blue Colors**, and press and hold the slider, or press and hold the ENTER key, to adjust the setting.

QUICK TIP! You can also change this setting by tapping the color palette  1 icon in the Top Bar. See *Using the Top Bar* for more information.

Color Palette 1



Color Palette 3




Set Depth Highlights

Highlight deep and shallow waters in Chart View and Chart Combo Views using the following LakeMaster features.

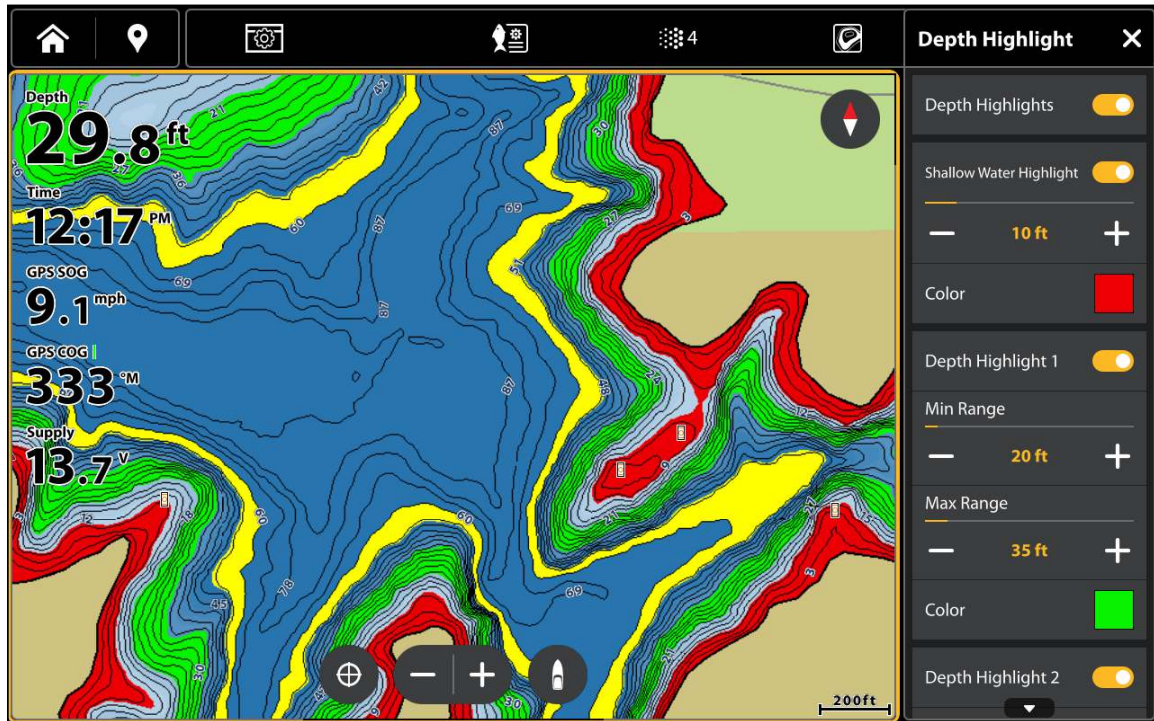
NOTE

Changing these settings will affect all presets, not just the active preset.

Open the Depth Highlights Menu

1. With a Chart view displayed on-screen, tap the **Depth Highlight**  icon in the Top Bar.
- OR
1. From the Chart X-Press Menu, select **Settings**.
 2. Select **Depth Highlight**.

Depth Highlight Menu

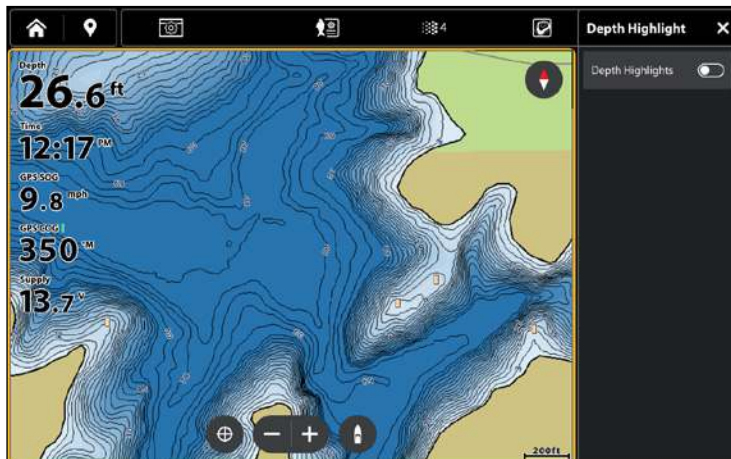


Highlight a Depth Range

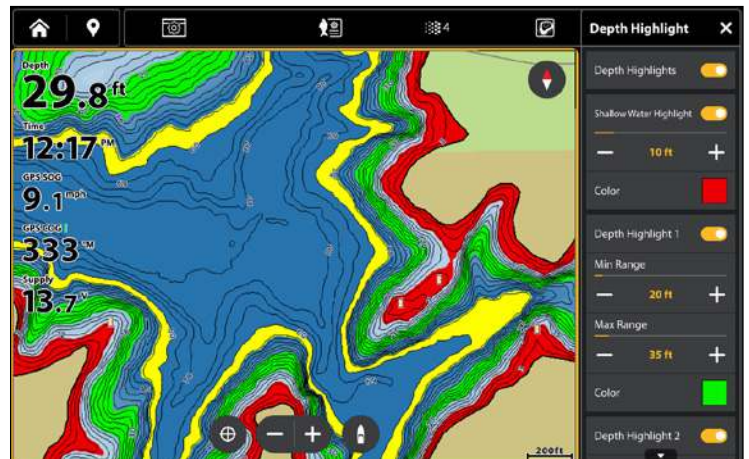
The Depth Highlight Menu allows you to select up to four depth ranges to be highlighted on the chart.

1. From the Depth Highlight Menu, select **Depth Highlights**.
Tap the **on/off** button, or press the ENTER key, to show or hide depth highlights.
2. With depth highlights turned on, set the depth range for **Depth Highlight 1** by selecting **Min Range** or **Max Range**.
Press and hold the slider, or tap the **+/-** buttons, to adjust the setting.
3. To turn on an additional highlight, select **Depth Highlight 2** and tap the on/off button, or press the ENTER key.
4. Repeat Step 2 with **Depth Highlight 2** to adjust the depth range.
5. Repeat Steps 2-3 for each additional depth highlight (up to four).

Depth Highlights OFF



Depth Highlights ON



Change the Highlight Color

If you've set Depth Highlights and they're not easy to see with the color palette you've selected, you can change the Highlight Color.

1. From the Depth Highlight Menu, select the Depth Highlight Color you wish to change.
2. Tap, or use the Cursor Pad/Joystick and Enter key, to select a new color.
3. Repeat these steps for each additional highlight you wish to change.

Orange Depth Highlights



Green Depth Highlights



Highlight Shallow Water

The Shallow Water Highlight identifies shallow waters when the depth is equal to or less than the level you set. Depth Highlights must be turned on to enable this feature.

1. From the Depth Highlights Menu, select **Shallow Water Highlight**.
2. Tap the **on/off** button, or press the ENTER key, to show or hide shallow water highlights.
3. Press and hold the slider, or tap the **+/-** buttons, to adjust the highlighted depth level.

Change the Shallow Color

If you've set Shallow Water Highlights and they're not easy to see with the color palette you've selected, you can change the Shallow Water Highlight Color.

1. From the Depth Highlights Menu, select the Shallow Water Highlight Color.
2. Tap, or use the Cursor pad/Joystick and Enter key, to select a new color.

Set Safe Depth Levels

Use the Safe Depth feature to set the minimum depth level for your vessel and to turn on highlights for hazards shallower than that level.

NOTE

Changing these settings will affect all presets, not just the active preset.

- 1. From the Chart X-Press Menu, select **Settings**.
- 2. Select **VX Settings**.
- 3. Select **Safe Depth** and press and hold the slider, or press and hold the ENTER key, to set the minimum depth level for your vessel.

Understand Safe Depth Level Settings

Sounding Highlight	displays soundings shallower than the safe depth in red
Symbol Highlight	displays hazardous objects shallower than the safe depth with a red outline
Always Show Hazards	forces hazardous objects and spot soundings shallower than the safe depth to display even if the chart object data is hidden


Change Layers

(LakeMaster Premium Chart Cards Only)

If you have a LakeMaster Premium map card, you can display layers that show aerial imagery [available for select lakes only] or shaded relief in Chart View and Chart Combo views. The transparency of these layers is customizable.

- **Aerial Imagery** can be applied to land only or to both land and water.
- **Shaded Relief** uses shadows to show features of the lakebed.

Show/Hide Layers

1. With a Chart view displayed on-screen, tap the **Layers** icon  in the Top Bar.

OR

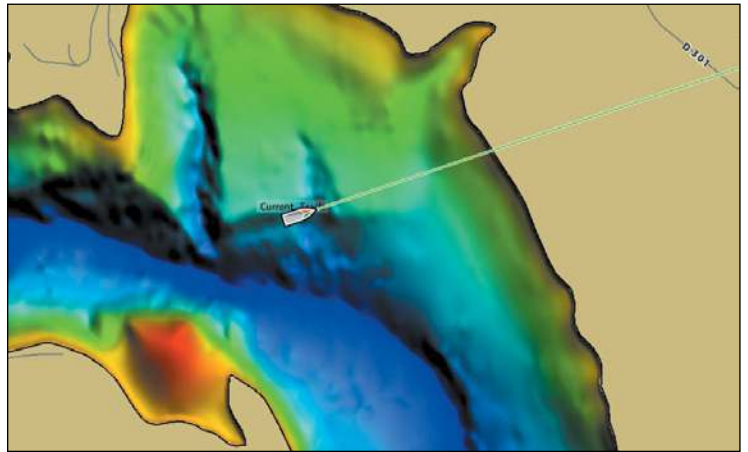
From the Chart X-Press Menu, select **Settings > Layers**.

2. Select a layer. Tap, or press the ENTER key, to show or hide it. [check mark = visible, blank = hidden]


Aerial Imagery (Land and Water)



Shaded Relief



Adjust Transparency of Layers

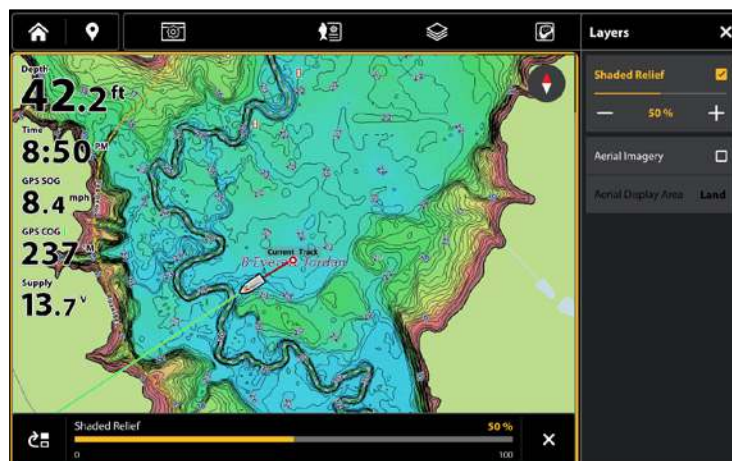
1. With a Chart view displayed on-screen, tap the **Layers** icon  in the Top Bar.

OR

From the Chart X-Press Menu, select **Settings > Layers**.

2. Select the layer you want to adjust.
3. Press and drag the slider, or press the +/- ZOOM keys, to adjust the setting. [0% = transparent, 100% = opaque]

Layer Transparency



DISPLAY A LAKE

The lake map displayed on the Chart View is based on the latitude/longitude position and the map card installed in the fish finder. GPS reception is required for the correct lake to be displayed.

The **Lake List** menu option allows you to display a different lake from the installed LakeMaster Map Card. When you select a lake, the cursor will move to the lake so you can see it on the Chart View. Then, you can mark waypoints, press the GOTO key to start navigation toward a waypoint, or press the CHECK/INFO key for more information.

No GPS Reception: If you don't have a GPS Fix, you can view the lake in Simulator mode. When you power on the fish finder, select Simulator from the Start-Up Options Menu. You can mark waypoints and routes and save them in Simulator mode.

Display a Lake

- 1. From the **Chart X-Press** Menu, select **Info**.
- 2. Select **Lake List**.

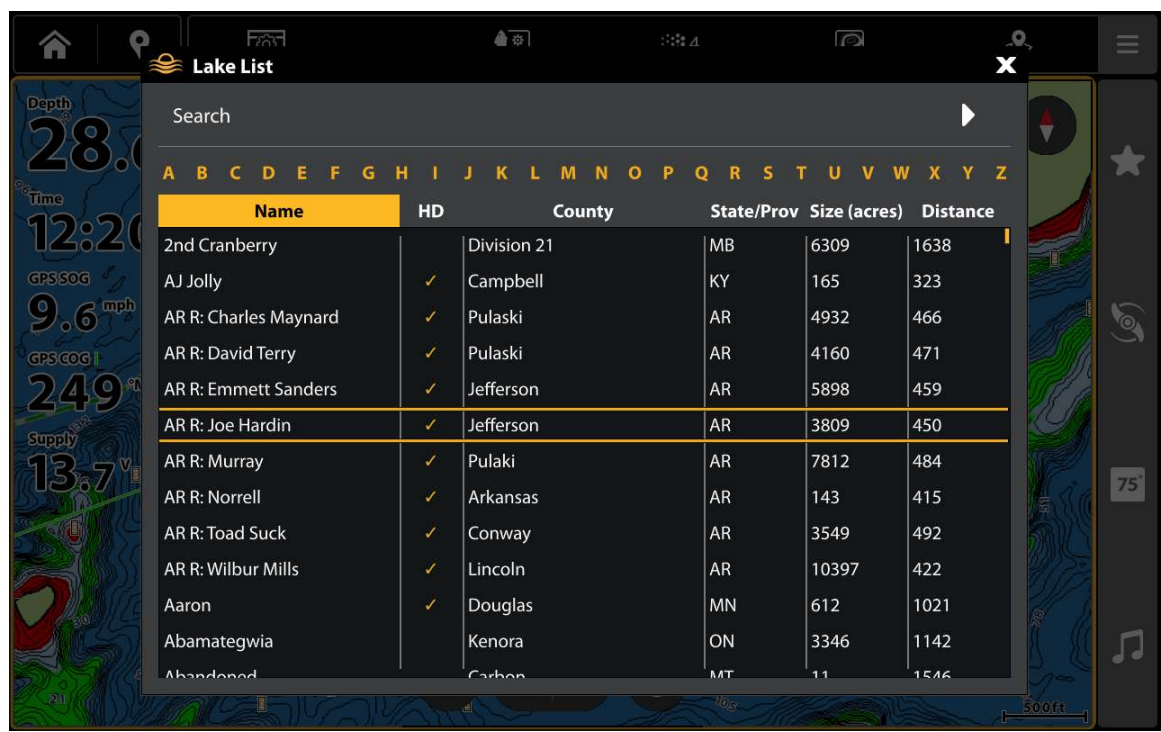
Sort: Tap column headers, or use the Cursor pad/Joystick and Enter key, to sort the list. Tap a second time to reverse the order of the lakes listed. You can sort by name, county, size, or identify the high-definition lakes (Hi-Def) on your card, etc.

Scroll: Swipe, or use the Cursor pad/Joystick, to scroll through the list.

Cursor To: Select a lake on the list and tap, or press the Enter key.

QUICK TIP! You can also search for a lake by name using the on-screen keyboard.

Selecting a Lake to Display



FOLLOW THE CONTOUR

Follow the Contour allows you to navigate a depth contour using Advanced GPS Navigation and your Minn Kota trolling motor [separate purchase required]. You can select a contour line and follow it in either direction, or use the Contour Offset feature to stay a set distance from a contour line or shoreline. Follow the Shoreline works just like Follow the Contour; however, the boat must be within 25 miles of the shoreline.

When you start Advanced GPS Navigation to Follow the Contour, all other types of navigation are stopped on the Humminbird fish finder and the Ethernet network.

WARNING

See your Advanced GPS Navigation manual for warnings, safety information, and operations instructions. You are responsible for the safe and prudent operation of your boat. Advanced GPS Navigation is designed to be an accurate and reliable tool that will enhance boat operation and improve your ability to catch fish. This product does not relieve you from the responsibility for safe operation of your boat. You must avoid hazards to navigation and always maintain a permanent watch so you can respond to situations as they develop. You must always be prepared to regain manual control of your boat. Learn to operate Advanced GPS Navigation in an area free from hazards and obstacles.

1 | Preparation

Before you use Follow the Contour, contour lines should be displayed on the Chart View.

1. Set Contour Lines to Visible

1. From the Chart X-Press Menu, select **Settings**.
2. Select **Depths/Contours > Contour Lines**.
3. Tap the on/off button, or press the ENTER key, to show or hide contour lines.

2. Set the Contour Offset

You can set Contour Offset to maintain a set distance from a contour line. If you want to navigate along a shoreline, use Contour Offset to maintain a safe distance from the shoreline. Contour Offset is a distance setting only, and does not measure water depth. Enter the Contour Offset based on your knowledge of the water depth in your current area.

No Offset: If you want to navigate the contour without an offset, you can skip this section.

During Navigation: Contour Offset can be adjusted while Follow the Contour navigation is in progress by selecting Contour Offset from the Go To menu or Adjust from the Trolling Motor side bar.

WARNING

Contour Offset does NOT account for changes in water depth. It is important to be aware of depth variations in your current area and adjust the Contour Offset as needed.

To set the Contour Offset, your boat must be positioned within **1/4 mile** of the selected contour.

1. Tap the contour line you plan to follow.

OR

Use the Cursor pad/Joystick to move the cursor to select a contour line.

2. Select **Go To > Follow the Contour**.
3. Select **Contour Offset**. Tap the +/- buttons, or the +/- ZOOM keys, to adjust the offset.

To remove the offset, set the offset to 0 [off].

2 | Start Follow the Contour Navigation

You can start navigation if the boat position is within **1/4 mile** of the selected contour.

⚠ WARNING

If the selected contour is a shoreline, set the Contour Offset. See **Preparation: Set the Contour Offset**.

Contour Offset does NOT account for changes in water depth. It is important to be aware of depth variations in your current location and adjust the Contour Offset as needed.

NOTE

When the Advanced GPS Navigation is following the contour, the Current Track is not saved and iTracks cannot be recorded.

1. Tap the contour line you plan to follow.

OR

Use the Cursor pad/Joystick to move the cursor to select a contour line.

OR

Proceed to Step 2 to start Follow the Contour at the boat position.

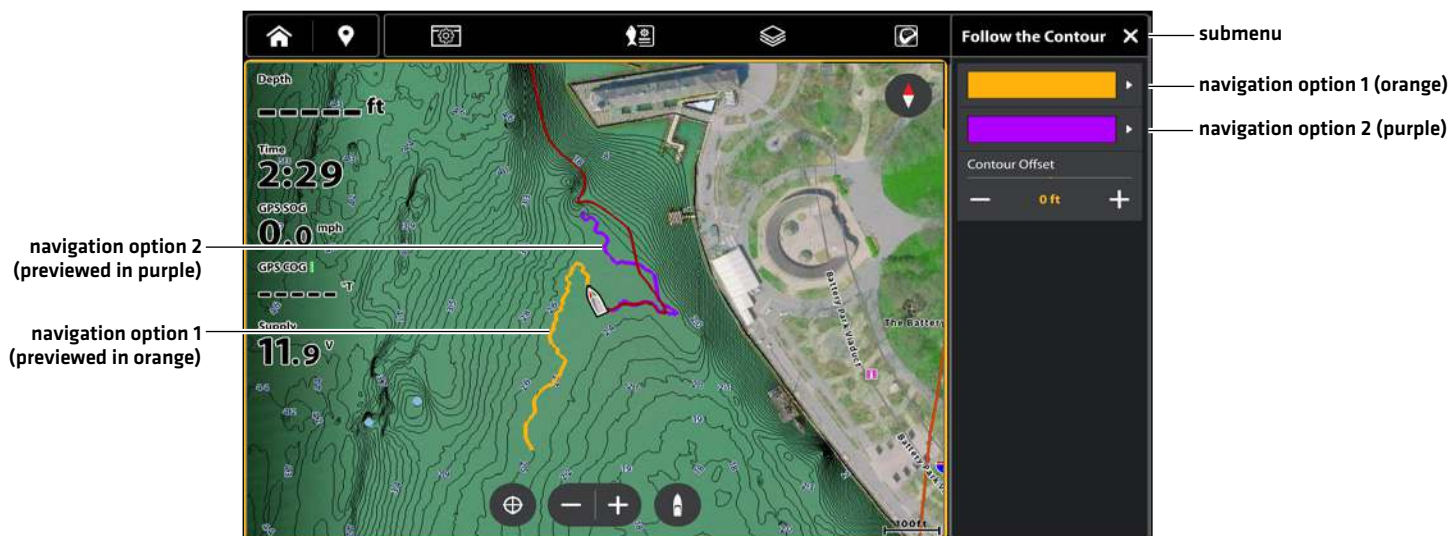
2. Select **Go To > Follow the Contour**.

3. Select a navigation direction from the submenu.

The navigation direction is previewed in orange or purple on the Chart View.

4. Power on the trolling motor to begin navigation. Refer to the **Advanced GPS Navigation** operations manual for additional information.

Starting Follow the Contour Navigation



Adjust the Contour Offset during Navigation

1. Press the GO TO key to open the Navigation menu.
2. Select **Contour Offset**.
3. Tap the +/- buttons, or the +/- ZOOM keys, to adjust the offset.

To remove the offset, set the offset to 0 [off].

OR

1. Tap **Adjust** from the trolling motor side bar.
2. Drag the slider, or press the +/- ZOOM keys, to adjust the contour offset.

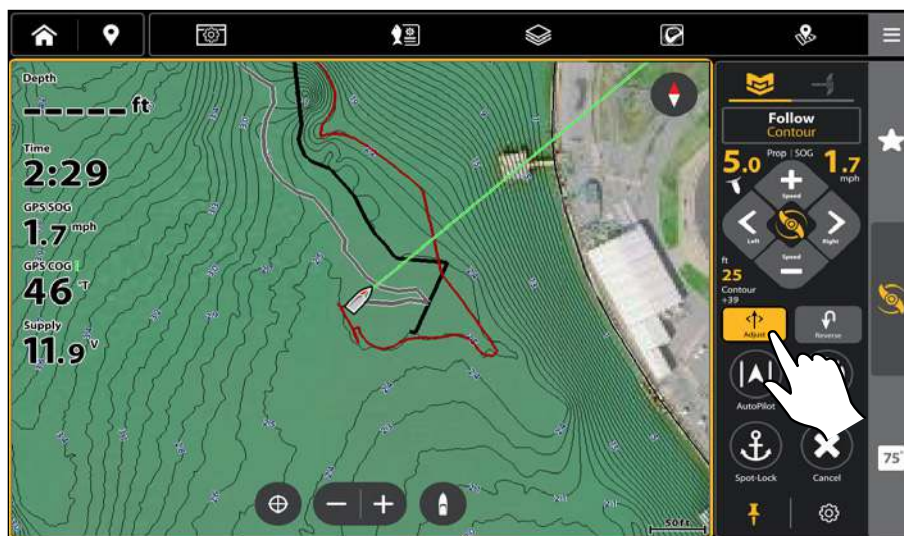
Jog the Contour Offset during Navigation

NOTE

The Jog feature is only available on the fish finder Follow the Contour was started on.

1. Press the GO TO key to open the Navigation menu.
2. Select **Adjust**.
3. Select **Contour Jog Shallower** or **Contour Jog Deeper**.

Adjusting Follow the Contour



Reverse Direction

1. Press the GO TO key to open the Navigation menu.
2. Select **Reverse**.

OR

1. Tap **Reverse** from the trolling motor side bar.

Cancel Navigation

Use the following instructions to cancel navigation.

1. Press the GO TO key to open the Navigation menu.
2. Select **Cancel Navigation**.

OR

1. Tap **Cancel** from the trolling motor side bar.


EXPORT NAVIGATION DATA

When you mark waypoints or save routes, tracks, and groups, they are saved to the fish finder. Then, you can export this navigation data to an SD/microSD card. Navigation data cannot be saved to your LakeMaster Chart Card.

CAUTION

Do NOT export navigation data [waypoints, routes, tracks, etc.] to your LakeMaster Chart Card. Saving data to your chart card will permanently damage it.

Export Navigation Data to a Blank SD/microSD Card

1. Install a formatted SD card into the front fish finder port or have the One-Boat Network App synced to your fish finder.
2. Press the HOME  key.
3. Select the **My Data** tool.
4. Select **Export All To...**
5. **Select a Save Location:** Select which SD Card to save the data to, or select to transfer the data to the One-Boat Network App.

All saved navigation data will be exported to the selected location.

CONTACT HUMMINBIRD

Any questions relating to the product should be directed to our Help Center at <https://humminbird-help.johnsonoutdoors.com/hc/en-us> or in writing to the address below:

Humminbird Service Department
678 Humminbird Lane
Eufaula AL 36027 USA

Social Media Resources:



Facebook.com/HumminbirdElectronics



X.com (@humminbirdfish)



Instagram.com/humminbirdfishing



YouTube.com/humminbirdtv

