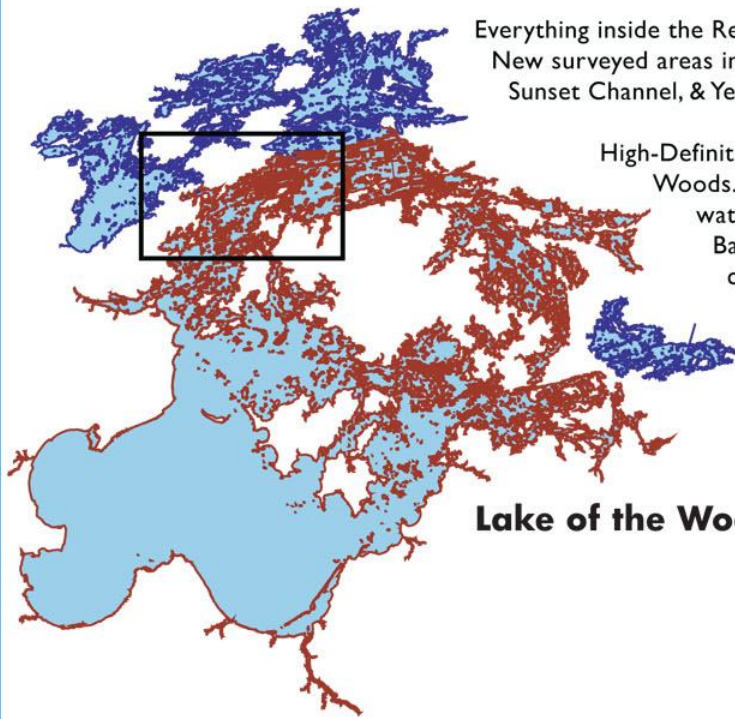


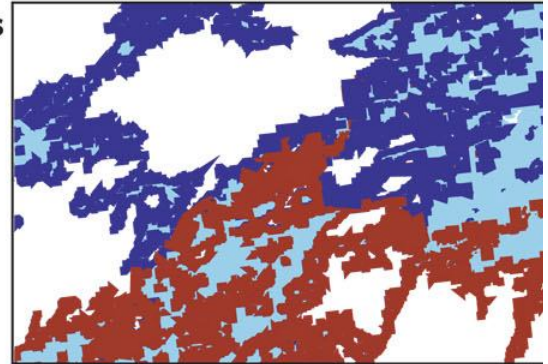
Woods/Rainy Coverage Map



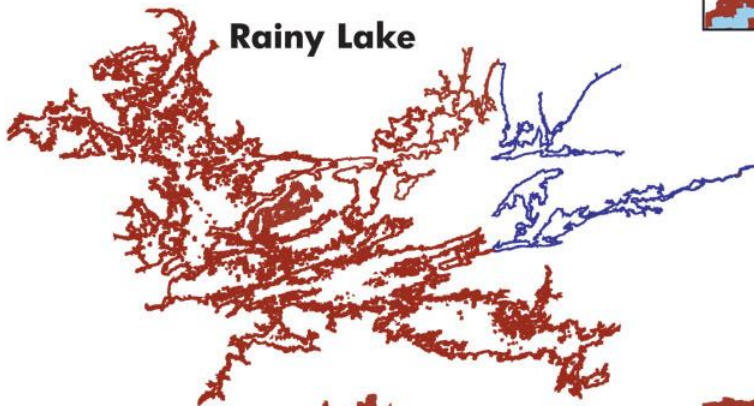
Everything inside the Red outline will display High-Definition, one-foot contours. New surveyed areas include Blueberry Inlet, Deadbroke Channel, Long Bay, Sunset Channel, & Yellow Girl Bay. Also includes detailed roads and base map.

High-Definition, one-foot Contours for nearly all of Lake of the Woods. The High-Definition detail covers all U.S. and Canadian water from Big Narrows through Big Traverse & Sabaskon Bays North to Sioux Narrows and west beyond Deadbroke channel (750,000 total surveyed acres). Rainy Lake & the Rainy River now including High-Definition, one-foot contours for Redgut & Rice Bay, all of Lakes Kabetogama, Namakan, Sand Point, and Crane. Black Sturgeon Bay not surveyed. *Blue areas not surveyed, no contours.*

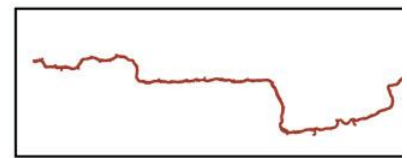
Lake of the Woods



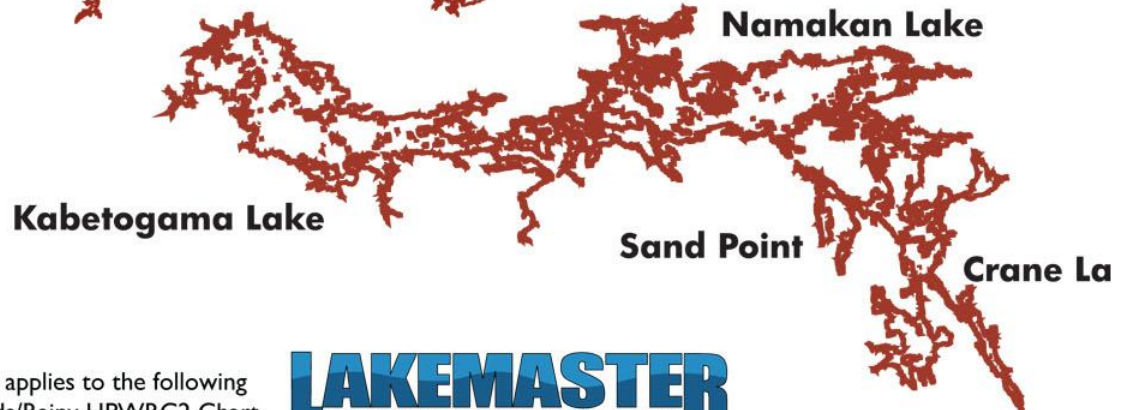
Inset- Big Narrows



Rainy Lake



Rainy River



Kabetogama Lake

Namakan Lake

Sand Point

Crane Lake

This coverage map applies to the following LakeMaster® Woods/Rainy HPWRC2 Chart

